



# Cat<sup>®</sup> TH336C

## Telehandler

### Specifications

#### Engine

Model	Cat <sup>®</sup> C3.4B Stage IIIB	
Standard	Cat C4.4 ACERT™ Stage IIIB	
Option 1	Cat C4.4 ACERT Stage IIIB	
Option 2	Cat C4.4 ACERT Stage IIIB	
Gross Power		
Standard	75 kW/101 hp	
Option 1	92.6 kW/124 hp	
Option 2	106 kW/142 hp	
Maximum Torque		
Standard	420 N·m/1,400 rpm	
Option 1	530 N·m/1,400 rpm	
Option 2	560 N·m/1,400 rpm	
	<b>Standard</b>	<b>Options 1 and 2</b>
Bore	99 mm	105 mm
Stroke	110 mm	127 mm
Displacement	3.4 L	4.4 L

• All engine horsepower (hp) are metric.

#### Weights

Operating Weight with Carriage & Forks	7630 kg
--	---------

#### Operating Specifications

Rated Load Capacity	3300 kg
Maximum Lift Height	6100 mm
Maximum Forward Reach	3109 mm
Top Travel Speed	40 km/h
Load at Maximum Height	2400 kg
Load at Maximum Reach	1000 kg
Outside Turning Radius Over Tires	3700 mm
Outside Turning Radius Over Forks	4670 mm

#### Service Refill Capacities

Fuel Tank	150 L
Hydraulic Tank	90 L

#### Tires

Standard	15.5/80-24 16PR
----------	-----------------

#### Brakes

Service Brakes	Servo Assisted on Front Axle
Parking Brakes	Mechanical on Front Axle

#### Hydraulic System

Maximum System Pressure	250 bar
Maximum Pump Flow	150 L/min
Pump Type	Variable Displacement Load Sensing Axial Piston Pump
Auxiliary Hydraulic Supply	
Intermittent	80 L/min
Continuous	60 L/min

#### Transmission Speeds

	<b>C3.4B Engine Only</b>	<b>All Engine Options</b>
Forward		
1	7 km/h	6.7 km/h
2	13.7 km/h	10 km/h
3	20.4 km/h	12.9 km/h
4	30 km/h	19.4 km/h
5	—	29.7 km/h
6	—	40 km/h
Reverse		
1	7 km/h	6.7 km/h
2	13.7 km/h	12.9 km/h
3	30 km/h	29.7 km/h

#### Boom Performance

Boom Up	5.1 Seconds
Boom Down	4.9 Seconds
Tele In	4.4 Seconds
Tele Out	4.6 Seconds
Crowd Forward (dump)	3.1 Seconds
Crowd Backward	2.5 Seconds
Combined	
Up and Out	10.0 Seconds
Down and In	7.0 Seconds
Drawbar Pull	
Standard	78 kN
Option 1	85 kN
Option 2	93 kN
Bucket Breakout Force to ISO 8313	55 kN
Boom Breakout Force	36 kN

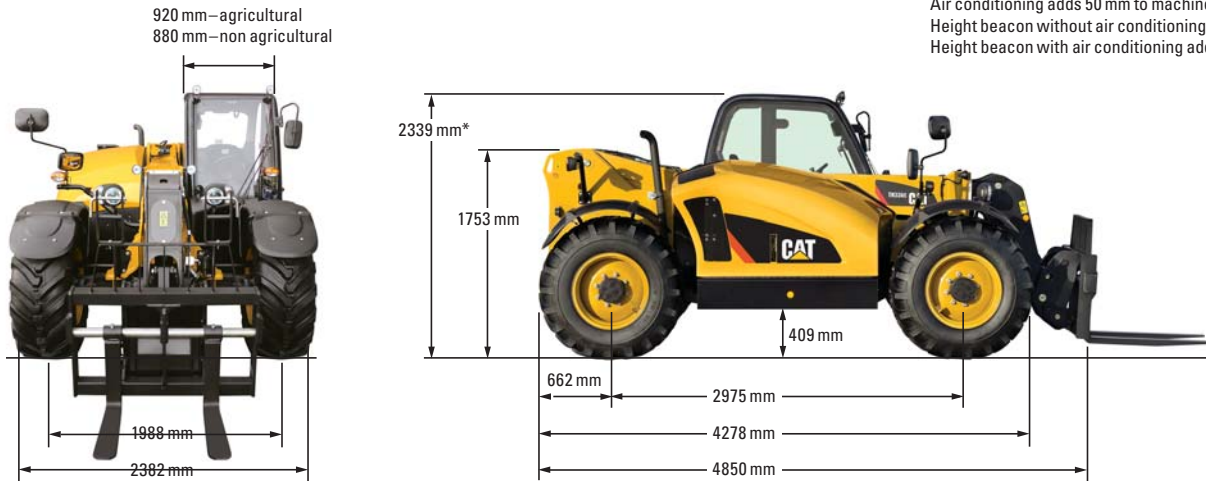


# TH336C Telehandler

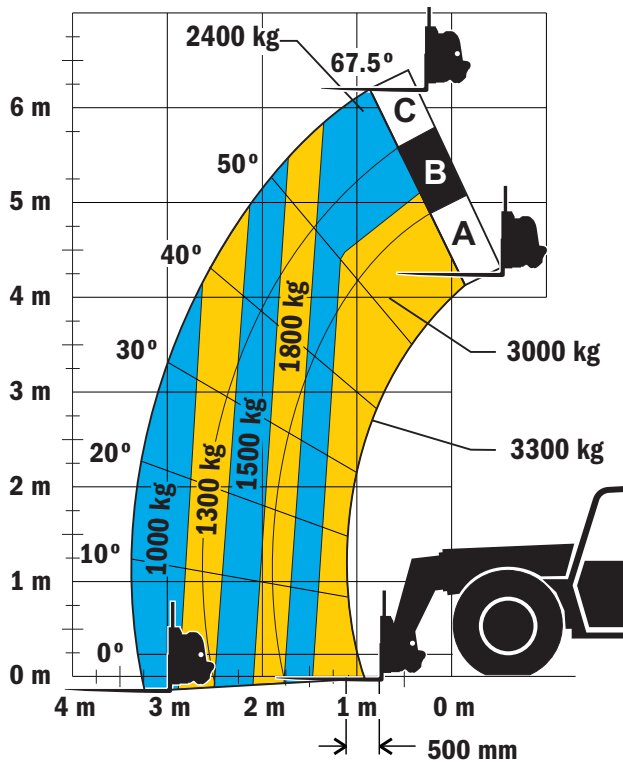
## Dimensions

All dimensions are approximate.

\*Top guard adds 98 mm to machine height  
 Air conditioning adds 50 mm to machine height  
 Height beacon without air conditioning adds 184 mm to machine height  
 Height beacon with air conditioning adds 227 mm to machine height



## Load Chart and Dimensions



### IMPORTANT

Rated lift capacities shown are with machine equipped with carriage and pallet forks. The machine must be level on a firm surface with undamaged, properly inflated tires. Machine specifications and stability are based on rated lift capacities at specific boom angles and boom lengths. (If specifications are critical, the proposed application should be discussed with your dealer.)

DO NOT exceed rated lift capacity loads, as unstable and dangerous machine conditions will result.

DO NOT tip the machine forward to determine the allowable load.

*Due to continuous product improvements, machine specifications and/or equipment changes may be made without prior notification.*

For more complete information on Cat products, dealer services, and industry solutions, visit us on the web at [www.cat.com](http://www.cat.com)

© 2013 Caterpillar  
 All rights reserved.

CAT, CATERPILLAR, their respective logos, "Caterpillar Yellow" and the "Power Edge" trade dress, as well as corporate and product identity used herein, are trademarks of Caterpillar and may not be used without permission.

AEHQ6731-03 (07-2013)  
 Replaces AEHQ6731-02

