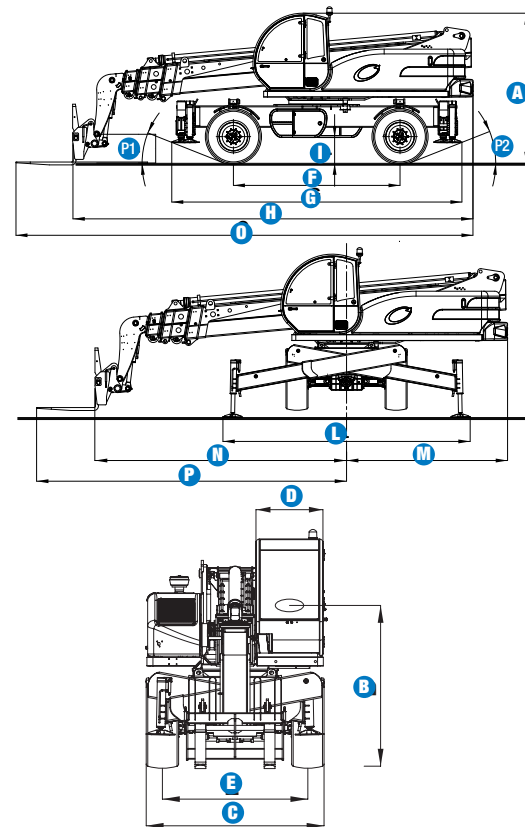


Specifications

MODEL		GTH™-6025 ER	
MEASUREMENTS	Metric	Imperial	
Lifting height maximum	24.84 m	81 ft 6 in	
Lifting capacity maximum	6,000 kg	13,228 lbs	
Lift capacity at maximum height	2,000 kg	4,409 lbs	
Lift capacity at maximum reach	250 kg	551 lbs	
Forward reach maximum	21.46 m	70 ft 5 in	
Reach at maximum height	4.25 m	14 ft 1 in	
A Height	3.15 m	10 ft 4 in	
B Height at steering wheel	2.23 m	7 ft 4 in	
C Width	2.47 m	8 ft 1 in	
D Cab width	93 cm	3 ft	
E Track	2.02 m	6 ft 8 in	
F Wheelbase	3.50 m	11 ft 6 in	
G Length at stabilisers	6.09 m	20 ft	
H Length at fork-holder plate	8.40 m	27 ft 7 in	
I Ground clearance	54 cm	1 ft 9 in	
L Overall width, stabilisers extended	5.04 m	16 ft 6 in	
M Side rear overhang	3.28 m	10 ft 9 in	
N Side front overhang	5.12 m	16 ft 10 in	
O Overall length	9.60 m	31 ft 6 in	
Q Overall front overhang	6.32 m	20 ft 9 in	
P1 Obstruction angle	21.5°	21.5°	
P2 Departure angle	21.5°	21.5°	



PRODUCTIVITY			
Inside/outside turning radius	2.75 m/4.85 m	9 ft / 15 ft 11 in	
Break out force (with 800L shovel SAE J 732)	11,000 kg	24,250 lbs	
Towing capacity at dynamometer**	11,500 kg/11,500 kg	25,353 lbs/ 25,353 lbs	
Drive speed max.	30 km/h	18.6 mph	
Fork-holder plate rotation	124°	124°	
Chassis levelling on both axles	+/- 7.5°	+/- 7.5°	
Floating forks	L 1200 mm Section 150 x 60 mm	L 3 ft 11 in Section 6 in x 2 in	
Tyres (DIN 70361)	445/65 R 22,5"AR-01-TL		
Lifting/lowering time**	26 sec./20 sec.	26 sec./20 sec.	
Extension/retraction time**	37 sec./25 sec.	37 sec./25 sec.	

POWER			
Engine	Cummins QSB4,5 4-cylinder Turbo Diesel 159 hp (119 kW)		
Tank capacities	Fuel	145 L	32 gal
	Engine oil	18 L	4 gal
	Hydraulic oil	230 L	50.6 gal

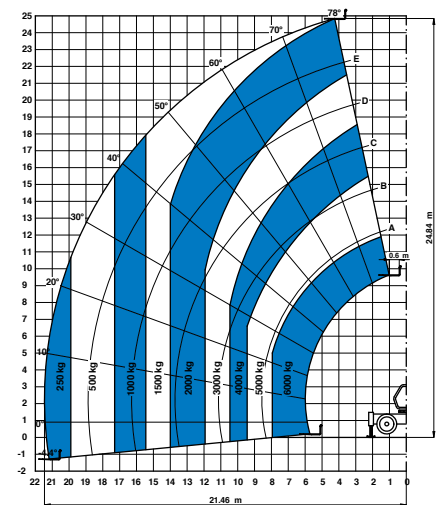
SOUND LEVEL			
Sound pressure level (operator position)	76 dB (LpA)	76 dB (LpA)	
Guaranteed sound power level	103 dB (LwA)	103 dB (LwA)	

VIBRATION LEVEL			
Vibration level hand-arm system	<2.5 m/s ²	<8 ft 2 in/s ²	
Vibration level whole body	0.32 m/s ²	1 ft 1 in/s ²	

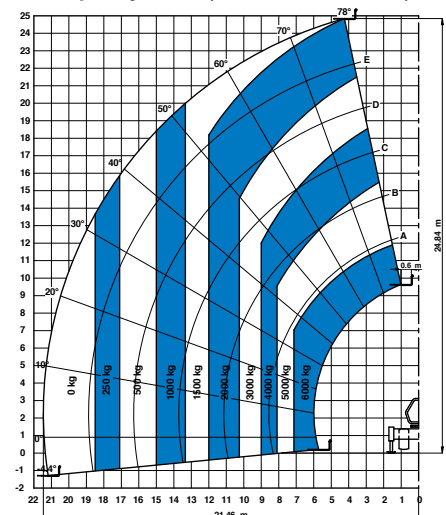
WEIGHT			
Weight***	20,450 kg	45,084 lbs	

STANDARDS COMPLIANCE			
EU Machinery Directive 98/37/CE			
Operating cab conforms to ISO3471 (ROPS) and ISO3449 (FOPS)			
Low emission engine conforms to EU Directive 97/68/EC stage III			
2000/14/EC EU Directive (noise)			

*Max. load, **Without load
*** Weight will vary depending on options and/or country standards



Lift capacity chart (with stabilisers, 0°)



Lift capacity chart (with stabilisers, 90°)

Features

STANDARD FEATURES

MEASUREMENTS

- 6,000 kg (13,228 lb) maximum lift capacity
- 24.84 m (81 ft 6 in) maximum lift height
- 21.46 m (70 ft 5 in) maximum forward reach

PRODUCTIVITY

- 4 x 4
- 4 - wheel steer
- 3 steering modes:
 - front wheel steer
 - crab steer
 - coordinated steer
- Hydraulic line on boom
- Electric line on boom including cable reel and cable bracket
- Power assisted steering
- Front and rear stabilisers
- Continuous rotation
- Hydrostatic transmission with variable displacement pump and motor electronically controlled
- Two speed mechanical gearbox, type "shift-on-fly"
- Multifunction electro-proportional 4 x 1 joystick
- Second Joystick kit on left handside
- Limited slip differential on front axle
- Chassis levelling on front axle +/- 7.5°
- Floating forks
- Attachment holder plate with hydraulic quick coupling
- Two-section door (glass upper/steel lower)
- Electronic angle/length indicators (monitor)
- Battery disconnection switch
- Adjustable suspended seat with operator detection seat switch
- Large diameter steering wheel
- Front and rear windscreen wipers
- Sunshield
- Roof protection grid
- Two side rear view mirrors
- Fish eye rear view mirror in the back
- Front & rear lights
- Side mounted engine for easy access to components
- Oil immersed, multi-disc brake on both axles
- Lockable fuel tank
- Longitudinal stability control system :
 - Visible display and load moment LEDs indicator
 - Audible alarm
 - Automatic lock-out of boom extension, lowering and lifting
 - Automatic lock-out of stabilisers
 - Automatic lock-out of rear axle
 - Automatic lock-out of boom suspended loads

STANDARD FEATURES cont.

- Maintenance collar
- Man-platform pre-arrangement
- Hydraulic Jib/Winch pre-arrangement
- Automatic detection of attachments through "plug'n play" system

POWER

- Cummins Turbo Diesel 159 hp (119 kW), Tier 3

TYRES

- 445/65 R 22,5" AR-01-TL (DIN 70361)



OPTIONS & ACCESSORIES

PRODUCTIVITY

- Air conditioning
- Second hydraulic line on boom
- Concrete mixing bucket pre-arrangement
- Windshield protection grid
- Adjustable spotlight on cab
- Adjustable spotlight on boom
- Wiper on cab roof
- Complete radio remote control
- Biodegradable naturelle HF-E Shell oil

ATTACHMENT OPTIONS

- Spare wheel 445/65 R22,5 AR-01
- Adapter for attachments
- Loading shovel 800 L
- Concrete mixing bucket 500/800 L manual/hydraulic discharge
- Concrete mixing bucket 500 L with remote control
- Brick holder basket
- 20 ton hydraulic jack and 30 mm wheel box wrench
- FEM 4 plate and forks kit
- Fork side-shift +/- 100 mm
- Fixed hook on plate
- 2 m jib, 2,000 kg capacity
- 4 m jib, 900 kg capacity
- 4 m jib with 900 kg capacity hydraulic winch
- Hydraulic winch 5000 kg
- Fixed man-platform
- Rotating / Extendable man-platform

Enquiries from Europe:

Tel: +31 165 519 361
Fax: +31 165 511 148
Email: AWP-InfoEurope@terex.com

Offices:

France

Tel: +33 (0)2 37 26 09 99
Fax: +33 (0)2 37 26 09 98

Germany

Tel: +49 (0)4221 491 810
Fax: +49 (0)4221 491 820

Spain

Tel: +34 93 572 50 90
Fax: +34 93 572 50 91

Scandinavia

Tel: +46 31 57 51 00
Fax: +46 31 57 51 04

The Netherlands

Tel: +31 165 519 361
Fax: +31 165 511 148

UK

The Maltings
Wharf Road
Grantham NG31 6BH
UK
Tel: +44 (0)1476 584333
Fax: +44 (0)1476 584334

Middle East

Tel: +971 4 399 0381
Fax: +971 4 399 0382
Email: AWP.Infome@terex.com

Russia & CIS countries

Tel: +7 495 660 32 30
Fax: +7 495 660 32 29
Email: info@terexrus.ru

Corporate Headquarters:

United States

18340 NE 76th Street
P.O. Box 97030
Redmond, WA
USA 98073-9730
Tel: +1 425 881-1800
Fax: +1 425 883-3475

Distributed By: