



M1600C RAIL2

SERIES 2

Compact machine designed for work on railway tracks

M1600C is specially designed and manufactured to run on railway tracks with its primary focus being on compactness, stability and flexibility. These three factors are crucial for its efficiency when working on the railway network. The compact upper carriage enables work to be carried out on double-track railway lines without affecting other railway traffic on the parallel line. The machine is very stable, in particular when working across the tracks thanks to its heavy counterweight. Flexibility is achieved due to the fact that work can be done both in cat. 2 and cat. 3 mode (high or low rail) and in few minutes the machine can be changed to off track work with a dozer blade instead of the rail wheels.



HYDREMA

TECHNICAL DATA:

HYDREMA RAIL SYSTEM

The M1600C RAIL2 series 2 is produced in two different versions:

Category 2/3: Driveline and brakes work indirectly from tires (pull wheels) for rail wheels. Using cat. 2 the machine is lifted more than 4" above the tracks which ensures no conflicts with sensors and track switches. Cat 2 driving gives the highest possible safety. Parking brake acts directly on the rail wheels. In cat. 3 mode the rubber wheels runs directly on the tracks.

Category 3: Rubber wheels runs directly on the tracks, with traction and brake acting directly from wheels to the tracks. Rail wheels runs with constant pressure control and suspension to achieve very high safety. Being partly on rubber wheels gives comfortable driving.

DIMENSIONS	L 2.0	L2.5
Total weight.....	41,000-42,100	41,000-42,100
Width over tires.....	8'2	8'2
Wheelbase (machine wheels).....	8'2	8'2
Wheelbase (rail wheels) cat 2.....	13'1	13'1
Wheelbase (rail wheels) cat 3.....	14'2	14'2
Track (machine wheels).....	6'5	6'5
Track (rail wheels).....	4'8	4'8
Ground clearance, rail wheels front.....	1'1	1'1
Ground clearance, rail wheels rear.....	1'0	1'0
Tyres.....	10.00-20	10.00-20
Machine height.....	13'11	13'11
Passage height, cab (road).....	10'1	10'1
Passage height, cab (rails).....	10'6	10'6
Rail clearance.....	4	4
Overall length:.....	21'4	21'12
Reach:.....	28'10	30'6
Lifting capacity, max.....	22,270	21,160
Turning radius, rear:.....	5'7	5'7

EQUIPMENT - RAIL SYSTEM

- ◆ Operation in both cat. 2 and 3
- ◆ Pendulum front axle
- ◆ Rail wheels, diameter 1'2" (ø650 mm)
- ◆ Hydraulic BM-quick hitch, REAR
- ◆ Electronic height- and swing- limitation (Krüger)
- ◆ Hydraulic emergency operation (manuel)
- ◆ Multi-Joysticks
- ◆ Extra hydr. coupling on under carriage, REAR, 12 gal/min
- ◆ Wheel steering via joysticks
- ◆ Operation/Steering of rail wheels via foot pedal
- ◆ Cameras; (2x under carriage, 1x counter weight)
- ◆ Hoseburst valves on Z2 and Z4
- ◆ Parking brake at front axle.
- ◆ Lockable steering wheel
- ◆ Cat walk
- ◆ 2 x rotating beacon

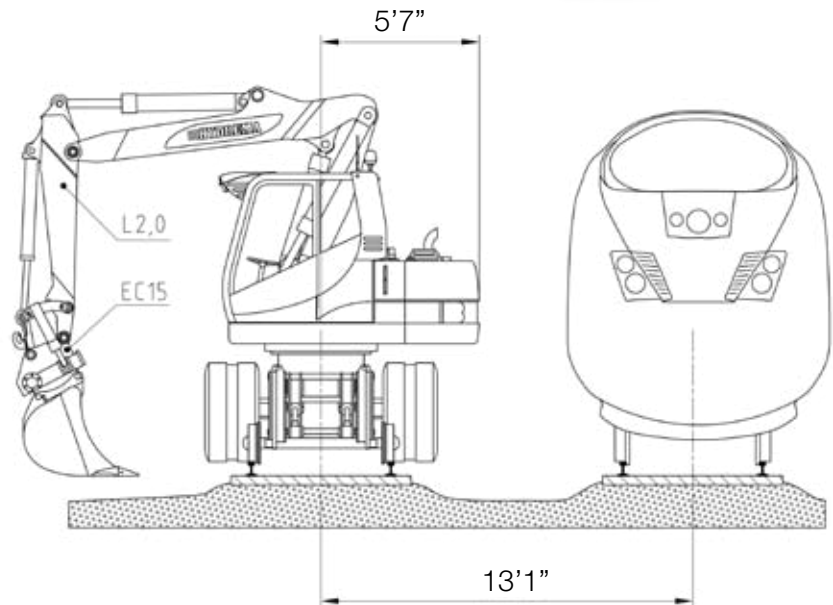
STANDARD EQUIPMENT

- ◆ Tires 10.00-20
- ◆ Axles with oil-immersed disc brakes in all hubs
- ◆ 2-step power shift transmission with creep gear
- ◆ Front axle with pendulum lock
- ◆ Digging brake
- ◆ Extra hydr. circuit for ZV1 with 53 gal/min
- ◆ 4-step mode for engine revs
- ◆ Engine Speed-Up in Joystick
- ◆ Automatics for Pendulum lock/Slewing brake and digging brake
- ◆ Tempomat (cruise control)
- ◆ Automatic air-conditioning
- ◆ Seat heating
- ◆ Head rest
- ◆ Multi adjustable armrests
- ◆ Radio with CD and MP3
- ◆ 6 Megabeam working lights
- ◆ Frontal solar blind and rain protection on cab
- ◆ 12V and 24V plug box in cab
- ◆ Storage box with cooling possibility

OPTIONAL EQUIPMENT

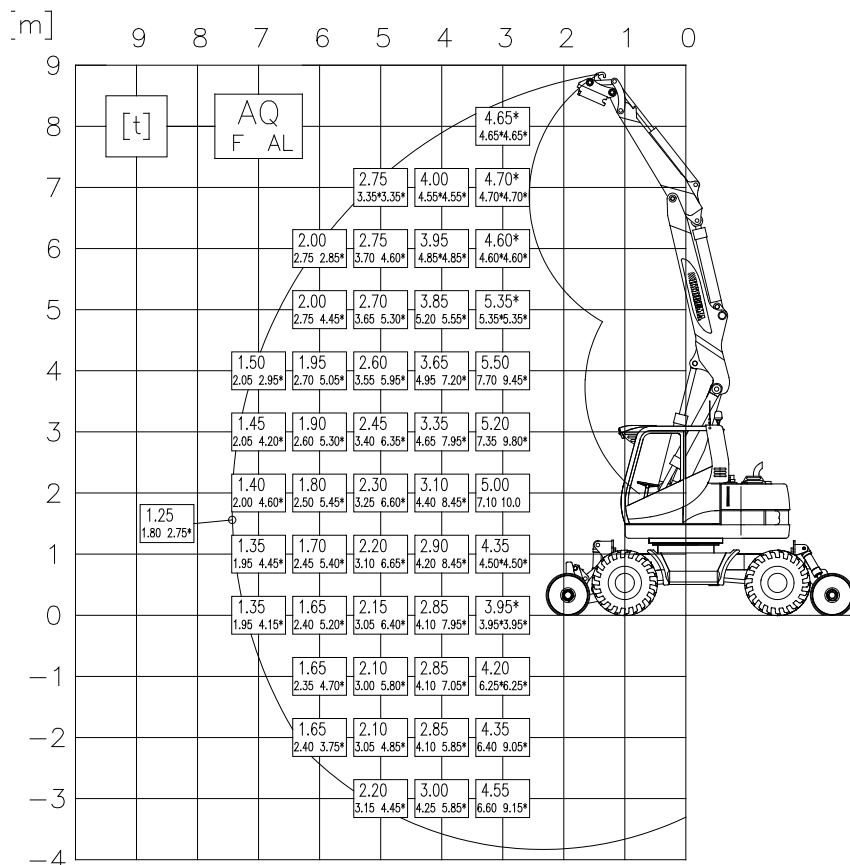
- ◆ Outer side mirror, right with electrical adjustment and heating
- ◆ Central automatic lubrication
- ◆ Air suspension seat with lumbar support
- ◆ Special return line
- ◆ Compressor/Tank for air plant - 80 psi
- ◆ Hydraulic circuit with priority, ZV3 - 40 gal/min
- ◆ Oil burner for engine/cab - 9,100 W
- ◆ Tiltrotator Engcon EC15

M1600C RAIL2
SERIES 2



MOST COMPACT ON THE MARKET:

The extremely short rear end enables work to be carried out on double-track railway lines without affecting railway traffic on the other line. The machine is also ideal for performing work on railway tracks at stations.



Lifting capacities expressed in metric tons:
1 ton = 1000 kg = 2204 lb

LOAD DIAGRAM:

Lift capacity ratings according to: ISO 10587
(87% of hydraulic lifting capacity or 75% of tipping load)
Tool weight: 176 lb - Digging boom: L2,0 (6'7")

AQ = on tracks, 90° transverse

F = on wheels, 90° transverse

AL = on tracks, front and rear

* = limited by the hydraulics