



ROADMIX

MATERIAL TRANSFER VEHICLE & ASPHALT PAVER



WORKS FOR YOU.™

THE NEW FACE OF TEREX® ROADMIX EQUIPMENT

TEREX CR662RM ROADMIX

Welcome to the new face of Terex RoadMix equipment. The new CR662RM RoadMix tractor features a sleek, updated hood design to house its Tier 4i-compliant 260 hp diesel engine, along with the highest capacity cooling package in the industry. This industry unique paver or MTV boasts the patented features that set Terex RoadMix tractors apart:

- Smartrac self tensioning track system
- Three point suspension
- Frame Raise
- Counter rotating variable pitch augers

ANTI-SEGREGATION

Terex RoadMix tractors feature the next generation of Remix Anti-Segregation System. The receiving hopper features twin inter-leafing, counter-rotating augers that aggressively mix 100% of the material.

The RoadMix tractor is designed to deliver a more homogeneous mix, resulting in more uniform mat temperature and consistent compaction.

By quickly moving material directly from the receiving hopper to the conveyor or screed, Terex RoadMix tractors reduce holding time to deliver a consistent mix temperature from truck to mat.

RoadMix tractors can offer all the benefits and capabilities of a material transfer vehicle with the conveyor attachment—non-contact, continuous and off-set paving—while combating material segregation. By adding a Terex Versascreed, Stretch 20 or Fastach screed, the Roadmix tractor combines the power of Remix technology with a mainline paver.

As a team, a RoadMix MTV feeding a RoadMix paver is a winning combination.



FEATURES YOU WON'T FIND ANYWHERE ELSE

- **Excellent visibility for increased productivity**
- **Ground pressure at less than 13 psi / 5.9 kg empty and 21 psi / 9.5 kg loaded**
- **Rubber-track propulsion system delivers better maneuverability than wheel units**
- **Usable on all lifts of new construction, including the critical base lifts**
- **In-hopper remixing augers aggressively re-blend material**



CONSISTENCY FROM TRUCK TO MAT

CLASS OF THEIR OWN

When you get right to it, the Terex® RoadMix tractors are in a class of their own. The Terex RoadMix MTVs and pavers are designed as a total solution for continuous paving. And it does get around. Go ahead: Compare. You'll see that our RoadMix machines:

- weight only 54,860 lb / 24,884 kg and that's with the dual-conveyor system attached
- are equipped with a rubber track system that exerts a mere 13 lb / 5.9 kg [empty], 21 lb / 9.5 kg [fully loaded] of ground pressure per square inch, ideally suited for bridge overlays where tire pressure could endanger structures
- have a travel speed of 9.6 mph / 15.5 km/hr
- are able to spin turn or pivot turn for excellent maneuverability in tight spaces





AN MTV BUILT TO COMBAT SEGREGA

REMIX ANTI-SEGREGATION SYSTEM

When bonuses hang in the balance, and segregation penalties keep you up at night, let us put you at ease with the next generation of our patented Remix Anti-Segregation System, which re-blends material into a more homogeneous mix, resulting in uniform temperatures across the entire mat width. Terex RoadMix MTVs are built from the ground up to address material and thermal segregation issues and establish continuous, non-contact paving.

- Large, 16.7 ton / 15 tonne full-capacity receiving hopper quickly accepts material from trucks without having to limit the flow of material from the truck.
- Variable-pitch auger design results in a differential draw-down of material along the entire shaft length, uniformly pulling from all areas of the hopper.
- Aggressively re-blends 100% of the material being drawn from the hopper through inter-leafing augers, mixing in a “figure eight” motion. Material then passes through a transfer conveyor pickup auger mounted at 90° to the remix auger before entering the transfer slats.
- Augers are positioned at or below hopper wing level for excellent truck clearance.
- Completely filling the hardened steel-lined feed trough, the auger design reduces material build-up, reduces wear and facilitates clean-up.

DENSITY RIDES ON UNIFORMITY

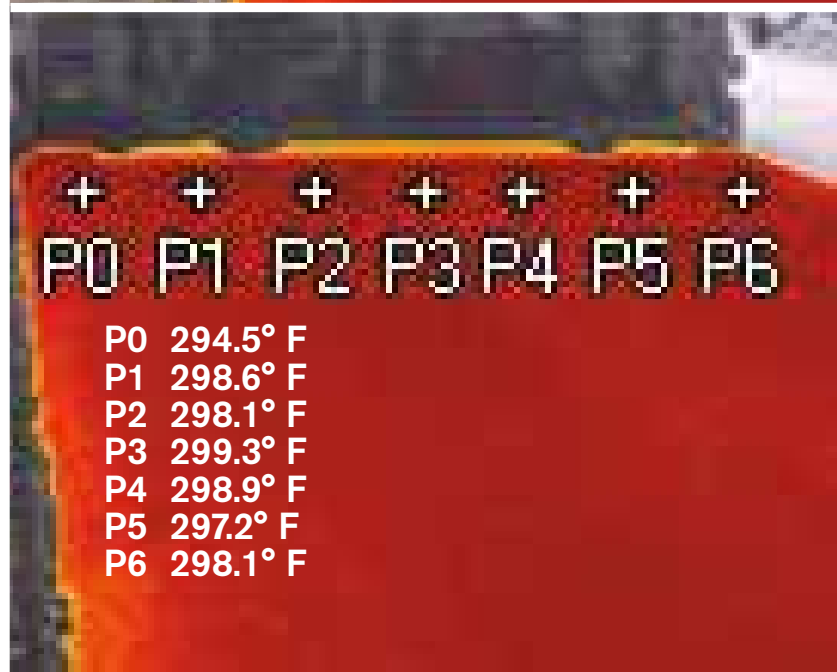
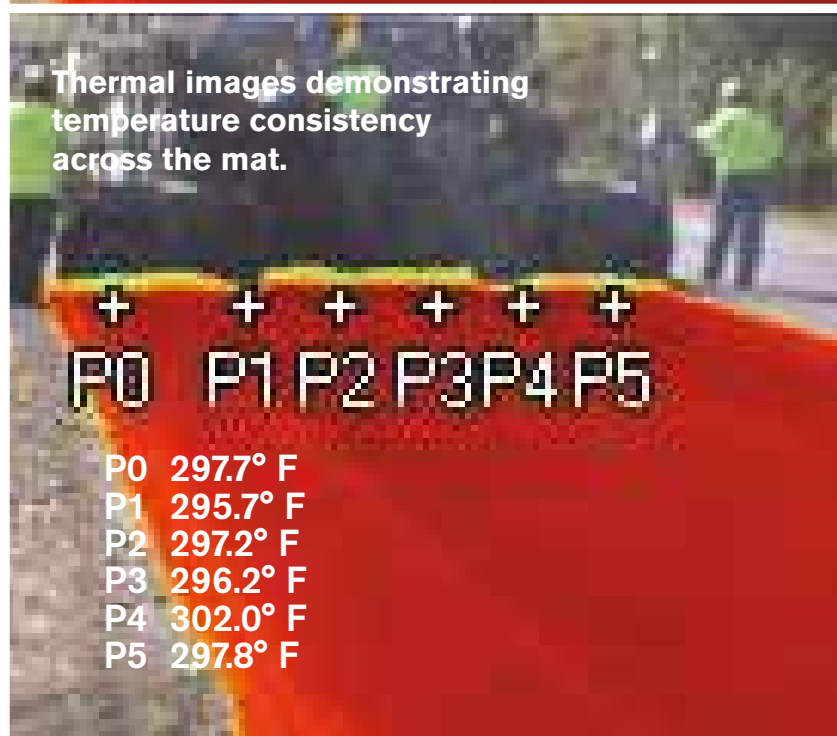
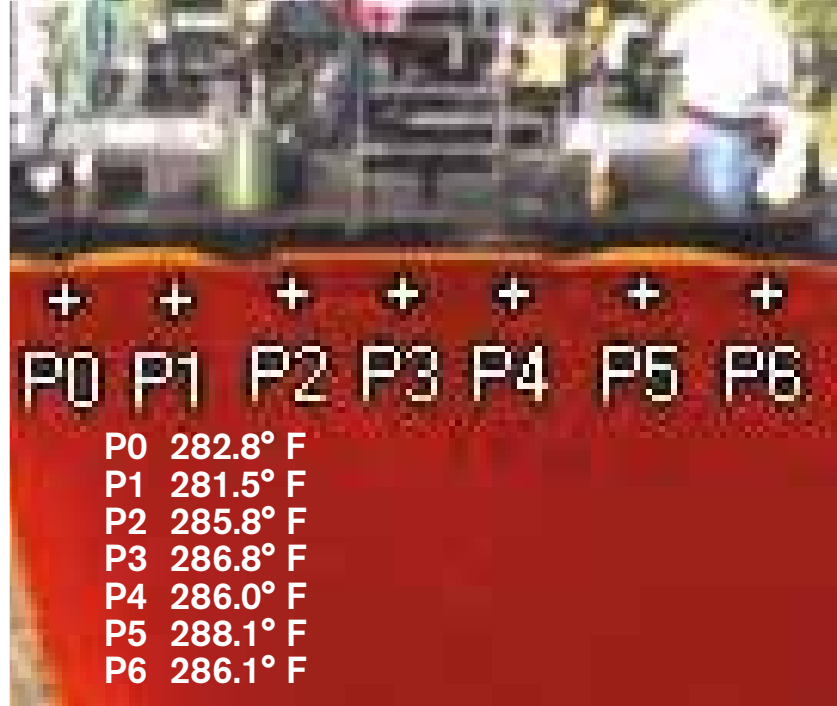
When density specs are tight, Terex RoadMix equipment is the solution. The machine’s inter-leafing augers provide a uniform draw-down of material throughout the hopper and aggressively re-blends the mix. The Remix System virtually eliminates material and thermal segregation, providing more uniform particle placement and consistent temperatures across the mat.

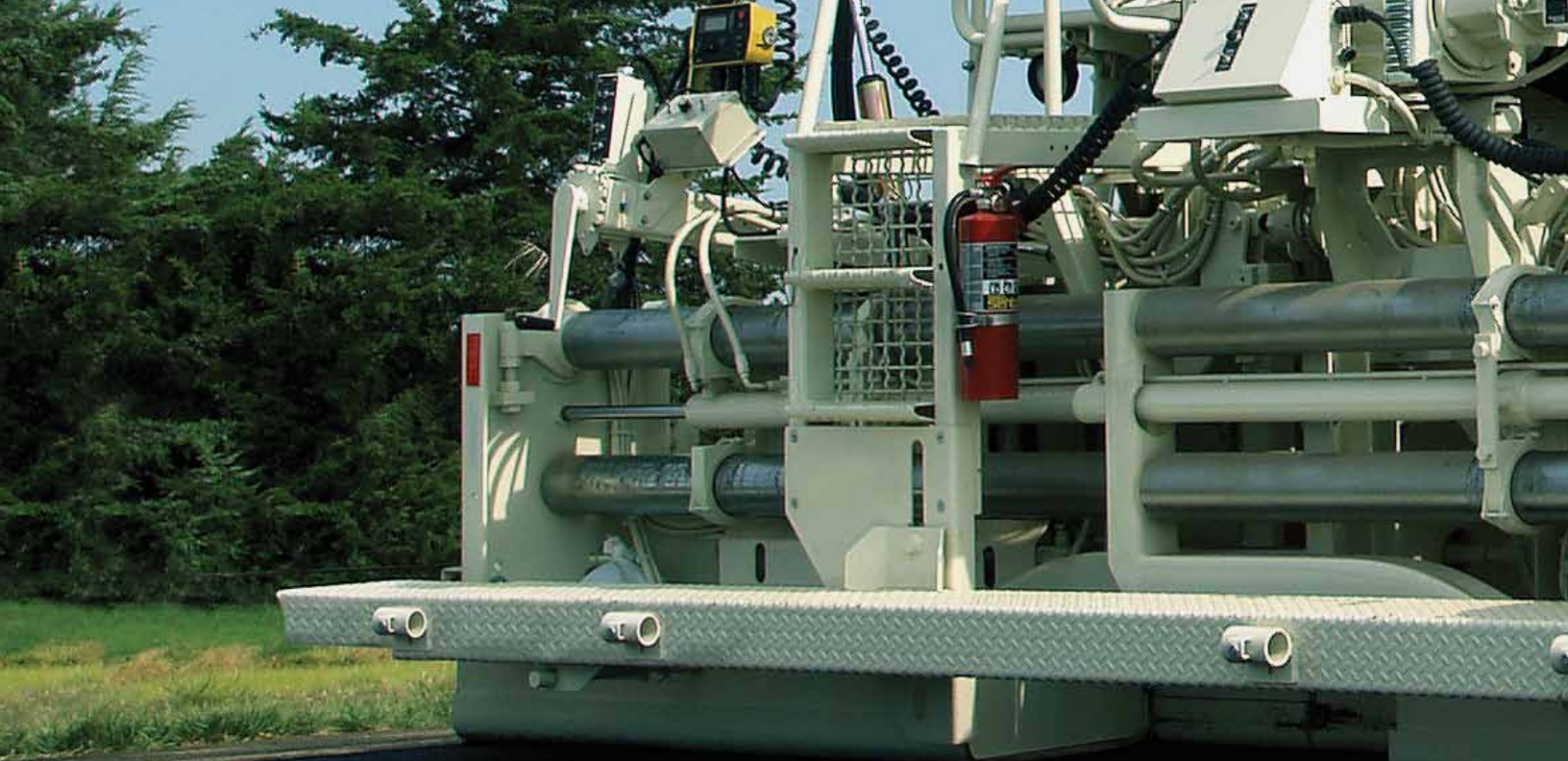
ATION

EFFECTIVE

Terex RoadMix MTV's offer unique features that make them the most effective material transfer vehicle on the market, for even the toughest applications.

- Material is quickly channeled from the hopper to the conveyors, reducing temperature loss
- A high 600 TPH / 544 t/hr transfer capacity establishes a continuous paving process
- Rubber-track drive system allows for use on all paving lifts
- A heavy-duty 100 hp / 75 kW motor powers each counter-rotating auger set for reliable, long service life
- 12 in / 305 mm diameter augers provide 42% more carrying capacity than the original Remix auger design
- Augers slope 3 in / 76.2 mm downward from front to rear, providing more efficient material flow and eliminating material build-up in the feed tunnel
- Conveyor swivels 55° left or right of center for off-set paving
- Meets state requirements for non-contact, continuous paving either in-line or echelon (side by side)





COMPLETE UTILIZA

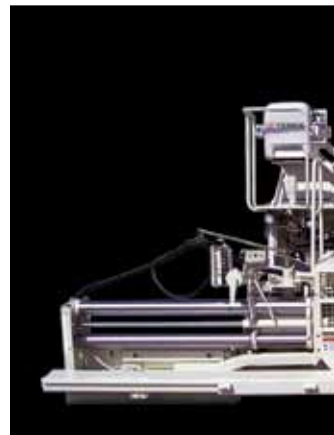
TEREX® ROADMIX PAVERS

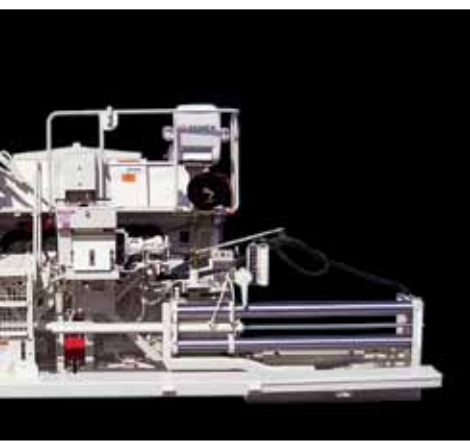
The Terex RoadMix tractor is not only a remarkable MTV that transfers hot-mix asphalt from truck to paver—it's also a highly efficient paver in its own right. Conversion from MTV to paver requires only a half day.

Not only does the RoadMix paver benefit from our Remix anti-segregation technology, it also features an outboard spreading auger design. Two outboard drive motors power left- and right-hand spread auger sections to efficiently deliver material to the screed. The auger sections back up to each other at the center, leaving very little separation. This new design eliminates the need for a chain drive box, thereby reducing the occurrences of center-line segregation.

Paver screed options include:

- Terex Stretch 20
- Terex VersaScreed 10
- Terex Fastach 10





HIGH-PRODUCTION MAINLINE PAVING IS AVAILABLE WHEN FITTED WITH HIGH-PERFORMANCE TEREX® SCREEDS.

SPECIFICATIONS

TRACTOR

WEIGHT*

Tractor	36,200 lbs (16,420 kg)
with Fastach 10	40,200 lbs (18,234 kg)
with VersaScreed 10	42,200 lbs (19,142 kg)
with Stretch 20	48,300 lbs (21,908 kg)
with standard conveyor	54,860 lb (24,884 kg)

*Based on average shipping weights.

ENGINE

Make/Model	Cummins QSB 6.7
Type	EPA Tier 4i turbocharged diesel
Horsepower	260 hp (194 kW) @ 2200 rpm
Electrical	105 amp, 12 vdc

CAPACITIES

Diesel fuel	82 gal (310 L)
Hydraulic oil	75 gal (284 L)
Cooling system	6.5 gal (25 L)



MATERIAL TRANSFER VEHICLE

MTV width	10 ft 8 in (3.25 m)
Operating speed	up to 225 ft/min (68.6 m/min)
Travel speed	up to 9.6 mph (15.5 km/hr)
Brakes	multiple disc parking, spring on/pressure off

CONVEYOR

Throughput	up to 600 TPH (544 t/hr)
Swivel	left/right of center 55°
Operational discharge height (min)	73.2 in (1,859 mm)
Operational discharge height (max)	115.8 in (2,941 mm)
Shipping discharge height (min)	73.2 in (1,859 mm)
Shipping discharge height (max)	115.8 in (2,941 mm)
Conveyor width	30 in (762 mm)

HOPPER

Length & width	8 ft 2 in x 10 ft 4 in (2,489 mm x 3,150 mm)
Volume	267 ft ³ (7.56 m ³)
Capacity (Hopper + Conveyors)	38 tons (34.5 tonnes)
Surge capacity with hopper insert	43 tons (39 tonnes)
Feed tunnel width (each)	30 in (762 mm)
Remix augers (diameter)	12 in (305 mm)
Auger thickness	3/8 in (16 mm)
Trough liner thickness	3/8 in (9.5 mm)

OPTIONAL EQUIPMENT

30 ft (9,144 mm) hose reel for spray-down
Additional umbrella
500-hour filter kit
6 kW generator
34 kW generator (with Stretch 20 screed)
Hopper insert
Uptime kit
Paver conversion kit
Longer 52 in (1,321 mm) swing conveyor w/ counter weight

EPA TIER 4i COMPLIANT

- ▶ IMPROVED ENGINE TORQUE
- ▶ REDUCED FUEL COSTS
- ▶ CLEANER EXHAUST EMISSIONS

PAVER

Paver width	10 ft 8 in (3.25 m)
Paving width (std)	10 ft (3.05 m)
Paving width (max)	30 ft (9.1 m)
Paving depth (max)	12 in (305 mm)
Paving speed (max)	225 ft/min (68.6 m/min)
Travel speed (max)	up to 9.6 mph (15.5 km/hr)
Rubber Belt Track	18 in x 13 ft 4 in (457 x 4,064 mm)
Brakes	multiple disc parking, spring on/pressure off

SPREADING AUGER SECTIONS

Construction	Cast, high alloy
Diameter	16 in (406 mm)
Thickness	5/8 in (16 mm)

HOPPER

Length & width	8 ft 2 in x 10 ft 4 in (2,489 x 3,150 mm)
Volume	267 ft ³ (7.56 m ³)
Capacity	16.7 tons (15 tonnes)
Feed tunnel width (each)	30 in (762 mm)
Remix augers (diameter)	12 in (305 mm)
Auger thickness	5/8 in (16 mm)
Trough liner thickness	3/8 in (9.5 mm)

SCREED

Screed plate	34 in x 10 ft (864 x 3,048 mm)
Thickness	1/2 in (12.7 mm)
Positive crown (hydraulically powered)	3 in (76 mm)
Negative crown (hydraulically powered)	1 in (25 mm)
Vibrations per minute (max)	3,000
Heaters	
Fastach 10 (two oil heaters)	178,000 BTU (total) 1.3 gph (4.9 liters/hr)
VersaScreed 210 (electric heat)	34 kW generator
Stretch 20 (four oil heaters)	274,000 BTU (total) 2.0 gph (7.6 liters/hr)
Stretch 20 (electric heat)	34 kW generator

OPTIONAL EQUIPMENT

Stretch 20 screed with electric or oil heat
VersaScreed 10 with electric heat
Fastach 10 screed with electric or oil heat
Generation 4 mechanical or sonic material feed control
Mechanical or sonic grade and slope control
Multi-foot grade reference system
Sonic averaging system
Proportional steer assist
Material feed package
Bevel guide plates
Cutoff shoes, 12 in (305 mm) and 24 in (610 mm) sections
30 ft (9,144 mm) hose reel for spray-down
Additional umbrella
500-hour filter kit



WHAT DOES EPA TIER 4 & TIER 4I MEAN TO YOU?

It's happening now. EPA Tier 4 interim and EU Stage IIIB emission standards for large off-road equipment really get rolling in 2011, and final standards – Tier 4 Final / Stage IV – phase in between 2013 - 2015 (varies by engine power category).

This is a big deal.

These new emission limits will dramatically improve the air we breathe. And while the equipment you already own won't be affected, new equipment you buy will require new technology to meet the new standards. This new technology may have an impact on your business in the form of some new procedures and costs associated with daily operation and maintenance.

Don't worry..

Terex is ready...ready with the equipment, knowledge, and expertise you'll need to remain compliant and competitive, now and for years to come.

Terex Works for You

No matter where in the world the job takes you, no one is better positioned to bring you the right Tier 4 / Stage IV-compliant equipment than Terex. No one.

When we partner with engine manufacturers, extensive technical evaluation is just one of many considerations. We know that uptime is everything in your business, so we make sure that our engine partners can meet all your needs. We evaluate the availability of parts, number of service locations and technicians that are trained and certified. Our goal is to make sure you receive the same quality of service from our engine manufactures as you expect from Terex.

Our safe, reliable, high-performance solutions will see you through this time of transition with minimal impact on your bottom line. And with our expertise and support, we'll help you get a handle on the changes you may need to make in operating and maintaining this new technology.

No hassles. Just results. That's the Terex way.

For more information on Tier 4 and Tier 4 interim please visit us at www.terex.com/tier4

www.terexrb.com

Effective Date: June 2012. Product specifications and prices are subject to change without notice or obligation. The photographs and/or drawings in this document are for illustrative purposes only. Refer to the appropriate Operator's Manual for instructions on the proper use of this equipment. Failure to follow the appropriate Operator's Manual when using our equipment or to otherwise act irresponsibly may result in serious injury or death. The only warranty applicable to our equipment is the standard written warranty applicable to the particular product and sale and Terex makes no other warranty, express or implied. Products and services listed may be trademarks, service marks or trade-names of Terex Corporation and/or its subsidiaries in the USA and other countries. All rights are reserved. Terex is a registered trademark of Terex Corporation in the USA and many other countries. Copyright 2012 Terex Corporation.

Terex Roadbuilding P.O. Box 1985, Oklahoma City, OK 73101
(405) 787.6020 1-888-TEREXRB www.terexrb.com



TEREX®

WORKS FOR YOU.™