

# Dynapac CP2700

## Pneumatic rollers

Atlas Copco



### Technical data



#### Masses

Operating mass (incl. ROPS)	10,800 kg
Mass with max. ballast	27,000 kg
Mass with wet sand ballast	17,000 kg



#### Traction

Speed low	7 km/h
Speed high	23 km/h
Speed high (EEC countries)	20 km/h



#### Compaction

Rolling width	2,300 mm
Tyre overlap	42 mm
Wheel loads, without ballast	1,200 kg
Wheel loads, with max. ballast	3,000 kg
Tyre pressure, min	250 kPa
Tyre pressure, max	850 kPa
Tyre type (smooth)	13/80 R20
Water spray system, type	Pressurized
Water spray system, tank capacity	415 l
Water spray system, spray nozzle	one per tyre
Ballast volume	3 m <sup>3</sup>
Wheel loads, with wet sand ballast	1,900 kg



#### Engine

Manufacturer/Model	Cummins QSB 4.5 T3
Rated power, SAE J1995	82 kW (110 hp) @ 2,200 rpm
Type	Water cooled turbo Diesel
Fuel tank capacity	210 l
Electrical system	24V



#### Hydraulic system

Driving	Axial piston pump with variable displacement. Axial piston motors (2) with variable displacement.
Steering	Axial piston pump with variable displacement.
Service brake	2 multidisc brakes on rear wheels activated by pedal.
Parking/ Emergency brake	Failsafe multidisc brakes in both gear boxes.

Find us locally at [www.atlascopco.com](http://www.atlascopco.com)

We reserve the right to change specifications without notice. Photos and illustrations do not always show standard versions of machines. The above information is a general description only, all informations are supplied without liability.

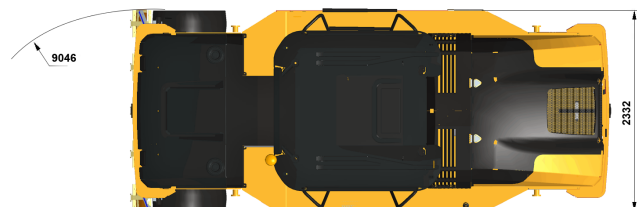
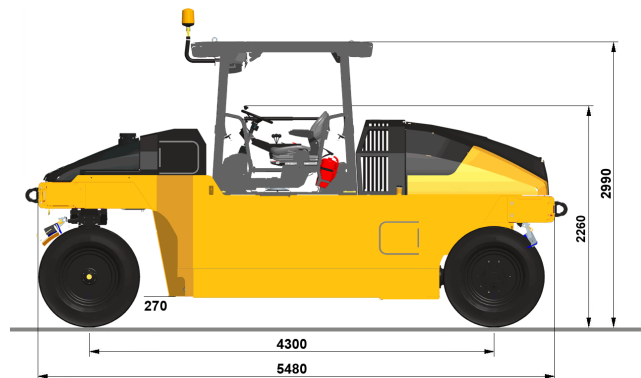
rce\_cp2700\_en-20140909.155906.pdf 2014-09-09 15:59

# Dynapac CP2700

Pneumatic rollers



## Technical data



Find us locally at [www.atlascopco.com](http://www.atlascopco.com)

We reserve the right to change specifications without notice. Photos and illustrations do not always show standard versions of machines. The above information is a general description only, all informations are supplied without liability.