

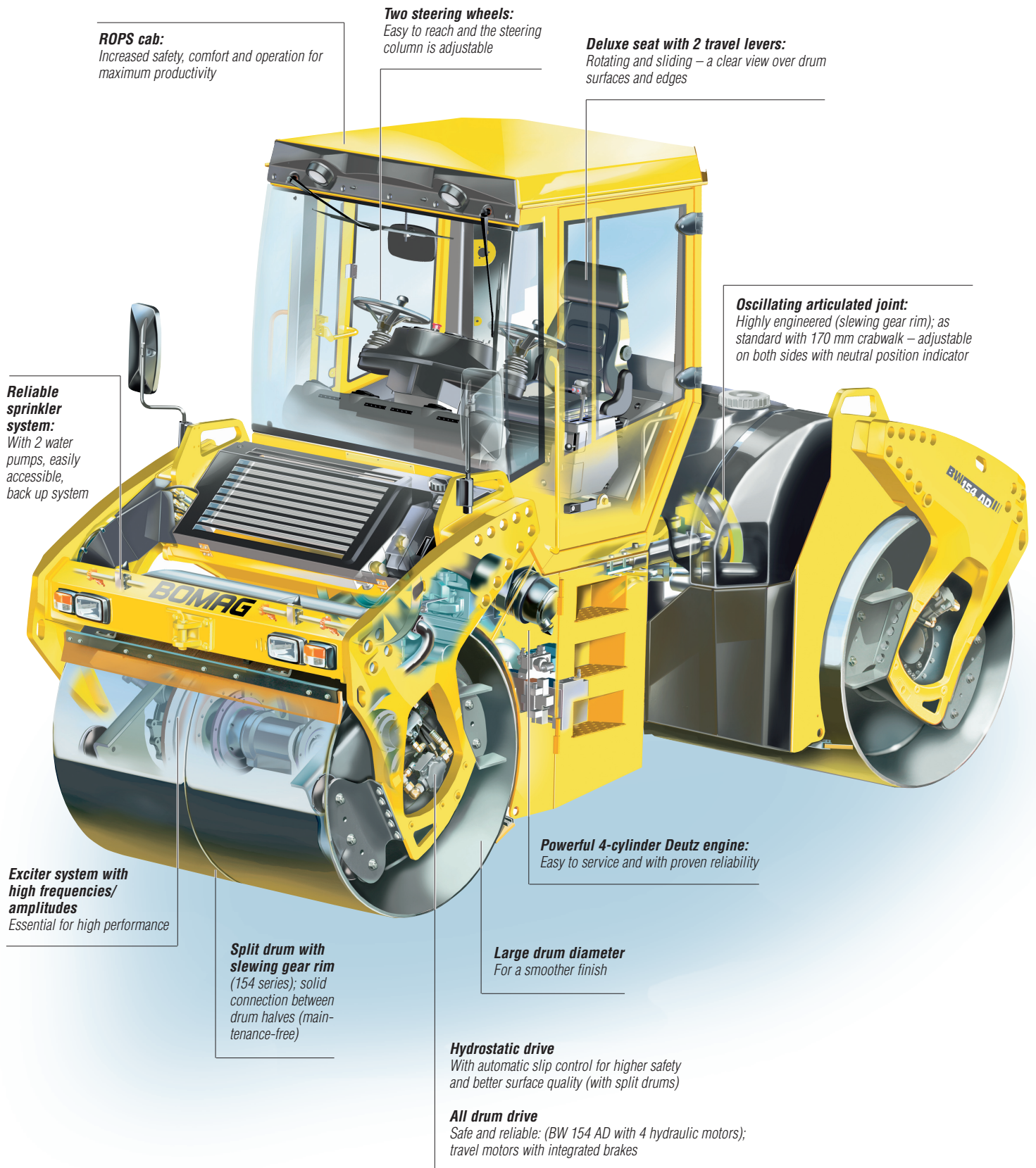
Heavy vibratory rollers, articulated

8 t to 14 t



Heavy tandem rollers: BW 141 AD, BW 151 AD, BW 154 AD, BW 161 AD, BW 161 ADH, BW 190 AD, BW 202 AD, BW 203 AD

Heavy combination rollers: BW 151 AC, BW 161 AC



ROPS cab:
Increased safety, comfort and operation for maximum productivity

Two steering wheels:
Easy to reach and the steering column is adjustable

Deluxe seat with 2 travel levers:
Rotating and sliding – a clear view over drum surfaces and edges

Reliable sprinkler system:
With 2 water pumps, easily accessible, back up system

Oscillating articulated joint:
Highly engineered (slewing gear rim); as standard with 170 mm crabwalk – adjustable on both sides with neutral position indicator

Exciter system with high frequencies/amplitudes
Essential for high performance

Split drum with slewing gear rim (154 series); solid connection between drum halves (maintenance-free)

Powerful 4-cylinder Deutz engine:
Easy to service and with proven reliability

Large drum diameter
For a smoother finish

Hydrostatic drive
With automatic slip control for higher safety and better surface quality (with split drums)

All drum drive
Safe and reliable: (BW 154 AD with 4 hydraulic motors); travel motors with integrated brakes

The application defines the design

Heavy tandem rollers – simple, safe, designed with the operator in mind

Most construction machinery is claimed to be user-friendly. However, the Series 4 BOMAG articulated rollers took account of all the driver's needs in the concept phase. Special features are the slanted drum supports and the open frame construction. Drivers appreciate the clear view to the drum surfaces and edges.



BW 161 AD with 1680 mm wide drums.

Wide range with a single concept

In all, BOMAG offers 16 models in three weight classes. The compact class 8-10 t: BW 141 AD with 1500 mm and the BW 151 AD and BW 151 AC (combination roller) with 1680 mm wide drums. All rollers are powered by 60 kW Deutz engines. The middle class 10-12 t: the BW 161 AD and BW 161 AC have the same working width. These rollers have a powerful Deutz engine with 75 kW capacity. The heavyweight class 12-14 t: BW 190 AD with 2000 mm wide drums. The rollers BW 202 AD and BW 203 AD feature 2135 mm wide drums. These rollers have a 98 kW Deutz engine.

The operator's platform

All models have a deluxe seat which can be shifted sideways and rotated to the driving direction. The console with two steering wheels has slant adjustment. This puts everything within easy reach. All control symbols are straightforward. Two travel levers by the seat allow work to be completed quickly and efficiently. Routine procedures, e.g. vibration, adjusting for crabwalk as well as lifting/dropping the pressure roll, are integrated into the levers.



Everything in reach: deluxe seat with two travel levers.



Operator's platform with two steering wheels: good overview, clear symbols.



Crabwalk (170 mm) as standard.

The advantages

Simple operation:

- Rotating/sliding seat
- 2 multi-function travel levers with integrated control elements
- Central articulated joint; drums always track correctly
- Crabwalk on both sides (170 mm), adjustable while driving
- Automatic vibration

Optimum, clear view as a result of:

- Open frame construction; drum surfaces and sprinkler system are completely visible
- Good view over the drum edges due to the slanted supports

Safety includes:

- Spring accumulator brakes, manually operated or automatic with a drop in pressure.
- Main battery switch
- Additional fuel pre-filter
- Seat contact switch



Compact dimensions, small turning circle.



Combination rollers give good surface sealing effect.



BW 154 AD with split drums; problem-free around bends.



Safety: Operator's platform with rail and ROPS/FOPS.



At home on large sites: BW 203 AD with massive output.

Efficient compaction on all applications

Applications:

The BW 141/151 ADs are articulated tandem rollers in the 8 t class. They have a host of innovative features. They are masters of all applications found in road construction (asphalt and granular bases). Vibration has been carefully fine-tuned (2 frequencies and 2 amplitudes). Flexible compaction forces: you can compact with double-vibration, single-vibration or static depending on the layer thickness or the type of material. The large drum diameters (1220 mm) give smooth asphalt surfaces. They make work easy on mixes sensitive to scuffing.

They are designed for medium to large construction sites. The combination rollers BW 151/161 AC and the BW 154 AD with split drums are asphalt specialist models. With these units, problems such as tears in the mat are noticeably reduced. They increase output as they are able to reduce the risk of shearing problems around curves. Four hydraulic motors and a hydraulic flow divider, which works as an automatic diff lock, ensure that all drum sections are safely driven. Our combination rollers combine a high level of compaction performance from the drum at the front with kneading and rolling from four smooth drum tyres at the rear.

The BW 161 AD/161 ADH have a higher performance potential and are preferred for use on larger sites involving earthworks and asphalt work. Advantage: faster rolling of thick layers using the large amplitude. Typical applications are: basecourse construction, asphalt layers for repairing/constructing roads and rolled concrete. The BW 190 AD (2000 mm working width), and the BW 202 / 203 AD with 2135 mm drum widths (12/13 t class) are our heavyweight models. They provide high compaction and output with a good mobility for this weight class. They are well suited to the compaction of large surface areas. This includes, e.g. motorways and airports.

Designed to take the strain:

These new articulated rollers have specially developed drum drives with robust reducing gears and tried and tested hydraulic motors. Advantages: high torque with proven reliability and extra sensitivity when reversing. The generous output of the Deutz diesel engines gives higher reserves e.g. when conditions become extreme (high altitude or high temperatures). The articulated joint is equipped with a slewing gear rim with massive load-bearing capacity. This means that uneven surfaces – e.g. road beds – can be ironed out.

Reducing costs with today's technology

BOMAG offers rollers in every weight class with automatic compaction technology (ASPHALT MANAGER*). This employs intelligent measuring and control technology to maximize the power needed for compaction. In addition, the roller driver receives a reference value EVIB (MN/m²) for compaction achieved. This reduces the number of passes, delivers constant results and cuts costs.

*) see separate brochure

Cut risks with BOMAG technology

Ground Level Service

All service points are easily accessible on these articulated rollers. Daily maintenance is just a visual inspection of the engine oil level and air filter. Other features: Deutz diesel engines with high power reserves meeting latest industrial standards; working economically with minimum diesel consumption. The laterally installed diesel engine is easily accessible from both sides. This only needs two large hinged doors to be opened.



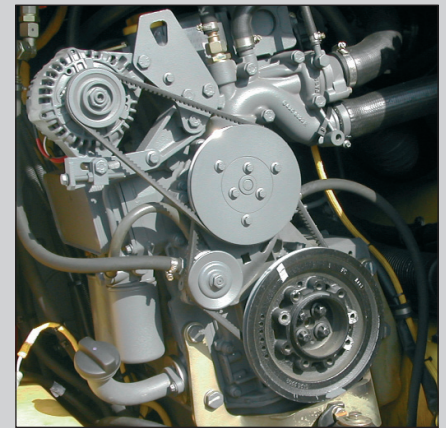
Easy to reach: cooler cleaning.

Reliable filtering: all models have an additional, standard, large fuel pre-filter with warning indicator. This means more safety against impurities (particles and water). Clean combustion air is taken in through a 2-stage air filter system with pre-filter and main filter. Only the protective grille needs lifting to clean the cooler at the front. Advantages: all service points can be accessed from the ground without tilting the cab. This saves time and improves reliability.

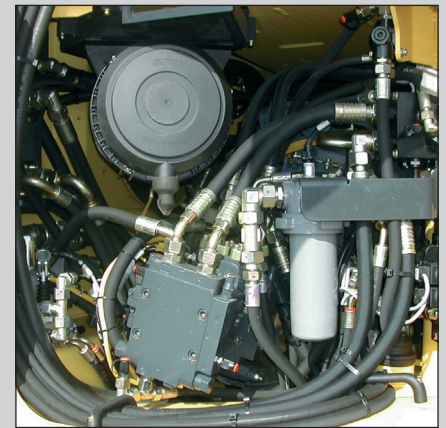
The efficient hydraulic system is equipped with a micro filter system – this works even on the first fill of the system.

Proven drive technology

High uptime with minimal servicing and maintenance outlay is achieved with the specially developed drum drives with robust reducing gears and proven hydraulic motors. The long replacement intervals, e.g. 2000 hours for hydraulic oil and filters, and 500 hours for the engine oil are standard for BOMAG. Again running costs are cut.



Proven Deutz engine; easily accessibility.



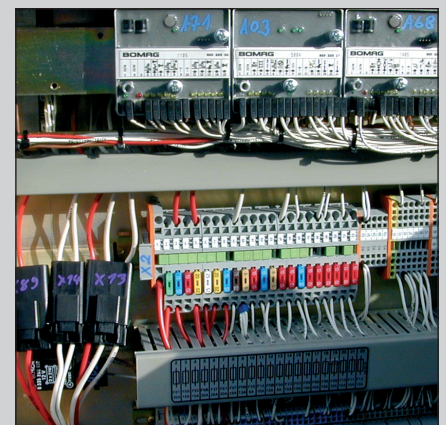
Cutting costs with longer service intervals.



Safety: emergency stop switch and warning lights are centrally located.

Central display: the focus for all information

The driver views real time information about the operational status of the roller. A function monitoring display gives visual and audible warnings if, for example, temperatures are too high or the pressure level changes. BOMAG rollers have reliable electrics with module technology (no circuit boards). Advantages: Possible errors can be localized more easily, e.g. using the optical displays (LEDs). Any faults are identified and shown on the central display. In severe cases, the machine switches itself off.



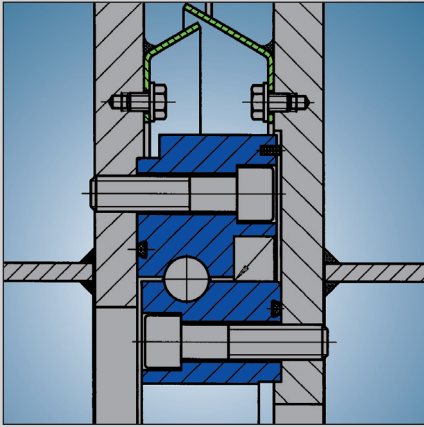
Electrical equipment with LED displays for quick fault diagnosis.

Cutting costs with BOMAG compaction technology

The exciters

These BOMAG rollers can be supplied with circular exciter (two optional amplitudes/frequencies) or with Asphalt Manager in the front drum, both as options. Both systems are the result of decades of BOMAG experience. Careful fine-tuning of design guarantees the best compaction and long

service life. Solid BOMAG technology with 2-point or 4-point bearing and oil lubrication facilitates high frequencies and amplitudes for faster compaction. The design produces short start-up times for vibration – important for even surfaces.



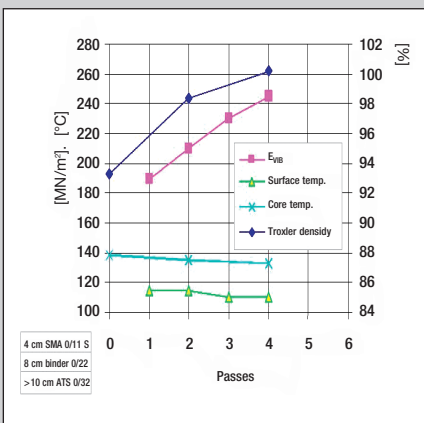
Safe solution: solid connection between the drum halves with slewing gear rim; smallest gap distance and careful sealing against dirt.



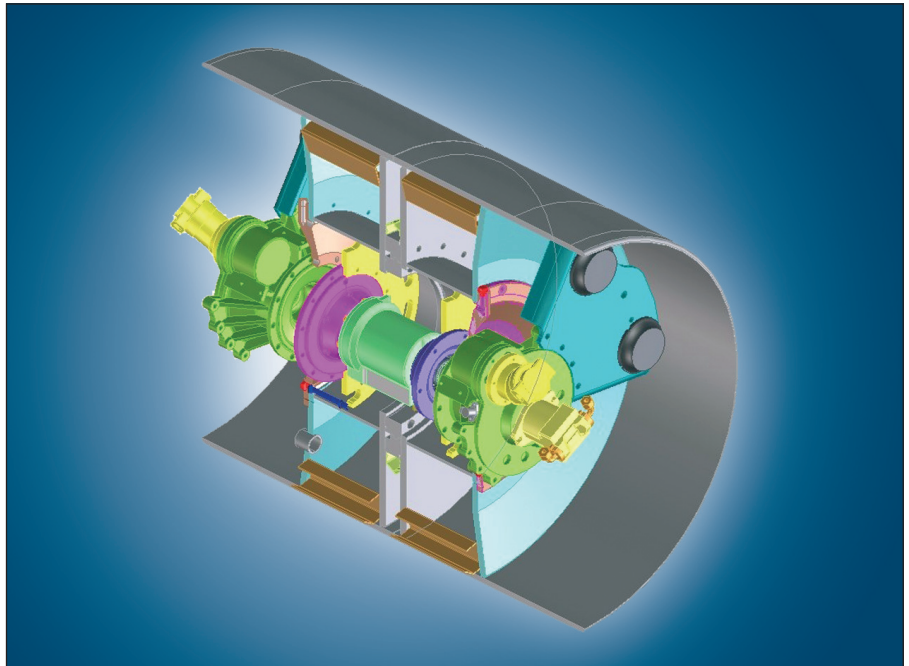
Vibration operated by hand or automatically.



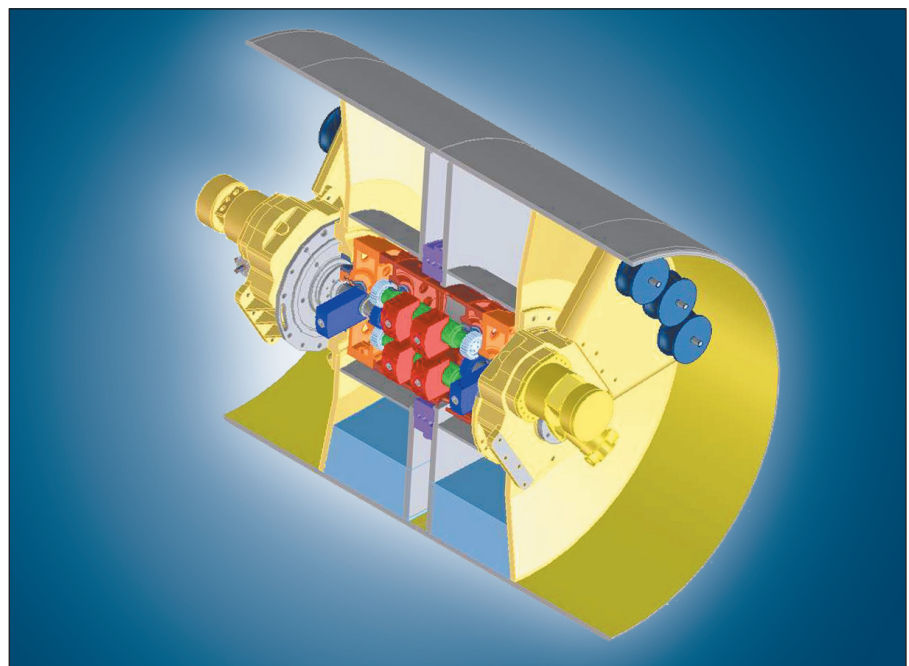
Central display for rollers with ASPHALT MANAGER.



Practice and theory agree: higher E_{VIB} = higher compaction.



Efficient exciter system BW 154 AD-4 with split drum.



Drum with directed vibration system for ASPHALT MANAGER.

The sprinkler system

Proven reliability

Roller drivers are right to attach great importance on a reliable sprinkler system. This was a major priority on the new models. Both water tanks are therefore located centrally, near the articulated joint. This has big advantages:

- The tanks are accessible from the ground and can be filled quickly and safely.
- They provide a low centre of gravity for the machine and increase driving stability.

Other advantages:

- The rollers have two independent sprinkler pumps as standard. If one pump is defective then the driver can immediately switch to the other pump. The driver can monitor his water supply on a precision display. If water is running low there is an early optical and audible warning.
- Maintenance: all nozzles and both pumps are easily accessible. The entire system can be fully emptied if there is a risk of frost.



Optimum water distribution with 6 nozzles; a proven system with triple filtering.

- No restriction to visibility across the drums.
- Automatic sprinkler system: the water is metered economically with an interval switch : fewer tank stops are required.
- Reliable filtering: dirt is caught in a fine-meshed net when the tank is filled. The nozzles are also equipped with a filter.
- The sprinkler pipes are sheltered above the drums. The driver can always see that the front and back nozzles are functioning from the driver's platform.



Sprinkler system with two pumps: can be easily switched from the operator's platform.



It doesn't get better than this: optimum view over the drums.



Large water tanks for fewer tank stops.



Easy access: nozzles with quick-release coupling and filter insert.



Reduced consumption with 12-stage interval switch.

Best for

COMPACTION

Good accessories increase roller efficiency

Most equipment is standard but... BOMAG articulated rollers can be equipped with many options for special road construction applications. They can be supplied either ex factory or as a field kit. They are designed to make handling easier and increase their

rollers make handling far easier. This is due to the clear view over the drum. All controls, such as lifting and dropping the roll or switching on the sprinkler system, can be operated easily from the driver's seat.



Efficient edge working with cutting disc or pressure rolls.

efficiency. And there are special options which may be mandatory depending on the country (ROPS, cab) or are necessary for particular jobs.

For example, this includes the precision chip spreader or edge compacting and cutting equipment. The latter is required to trim the edges of an asphalt cover layer cleanly or to compact binder and bearing layers unsupported at the edges.

Working with any edge compacting roll requires some practice. BOMAG articulated



BS 180 precision chip spreader for precise and even coverage.



Thermal apron: keeps the tyres on a combination roller warm for longer.

BOMAG provides local service and support no matter where your next contract is located.

As world market leader in compaction equipment, we offer you the widest range of products backed by expert support and advice aimed at keeping your operation profitable.

Modern manufacturing plants in Germany, USA and China together with licencees and partners around the world supply BOMAG rollers to global markets.

Regional customer care is centred on six branches in Germany, eight subsidiaries in Austria, Canada, China, France, Great Britain, Italy, Japan and USA, one sales office in Singapore and over 500 independent BOMAG dealers.

BOMAG Service. Everywhere and for every need. Our branches and dealers are backed by BOMAG's Central Parts warehouse where about 40,000 parts are held against customer requirements. You expect top service from BOMAG. We aim to provide it.

Quality! For the paint finish of the machine BOMAG as far as possible uses a high quality environmentally friendly powder coating, which excels by its excellent resistance against corrosion, scratching and ultraviolet light.

BOMAG. The world's foremost compaction company.

The machines illustrated may show optional equipment which can be supplied at additional cost. Specifications may change without notice.

- **Head Office/Hauptsitz:**
BOMAG, Hellenwald, 36154 Poppard, GERMANY,
Tel.: +49 6742 100-0, Fax: +49 6742 3090, e-mail: info@bomag.com, www.bomag.com
- **BOMAG Maschinenhandelsgesellschaft m.b.H.,** Porschestraße 9, 1230 Wien, AUSTRIA,
Tel.: +43 1 69040-0, Fax: +43 1 69040-20, e-mail: austria@bomag.com
- **BOMAG (CANADA), INC.,** 3455 Semenyk Court, Mississauga, Ontario L5C 4P9, CANADA,
Tel.: +1 905 361 9911, Fax: +1 905 361 9962, e-mail: canada@bomag.com
- **BOMAG (CHINA) Compaction Machinery Co. Ltd.,** No. 2808 West Huancheng Road,
Shanghai Comprehensive Industrial Zone (Fengxian), Shanghai 201401, CHINA,
Tel.: +86 21 33655666, Fax: +86 21 33655608, e-mail: china@bomag.com
- **BOMA Equipment Hong Kong LTD.,** Room 1033, 10/F Chum Centre 700, Castle Peak Road,
Kowloon, HONG KONG, Tel.: +852 2721 6363, Fax: +852 2721 3212, e-mail: bomaghk@bomag.com
- **BOMAG FRANCE S.A.S.,** 2, avenue du Général de Gaulle, 91170 Viry-Châtillon, FRANCE,
Tel.: +33 1 69578900, Fax: +33 1 69962660, e-mail: france@bomag.com
- **BOMAG (GREAT BRITAIN), LTD.,** Sheldon Way, Larford, Aylesford, Kent ME20 6SE, GREAT BRITAIN,
Tel.: +44 1622 716611, Fax: +44 1622 718385, e-mail: gb@bomag.com
- **BOMAG Italia Srl,** Via Roma 50, 48011 Alfonsine, ITALY,
Tel.: +39 0544 864235, Fax: +39 0544 864367, e-mail: italy@bomag.com
- **FAYAT BOMAG Polska Sp. z o.o.,** Ul. Szyszkowa 52, 02-285 Warszawa, POLAND,
Tel.: +48 22 482 0400, Fax: +48 22 482 04 01, e-mail: poland@bomag.com
- **FAYAT BOMAG RUS OOO,** 141400, RF, Moscow region, Khimki, Klayazma block, h. 1-g, RUSSIA,
Tel.: +7 (495) 287 92 90, Fax: +7 (495) 287 92 91, e-mail: russia@bomag.com
- **BOMAG GmbH,** 300 Beach Road, The Concourse, #18-06, Singapore 199555, SINGAPORE,
Tel.: +65 294 1277, Fax: +65 294 1377, e-mail: singapore@bomag.com
- **BOMAG Americas, Inc.,** 2000 Kentville Road, Kewanee, Illinois 61443, U.S.A.,
Tel.: +1 309 8533571, Fax: +1 309 8520350, e-mail: usa@bomag.com

BOMAG
FAYAT GROUP