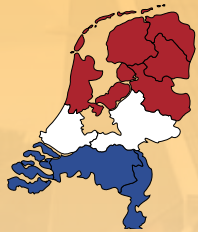




V6004T TELE

Wheelloaders



Giant made in Holland



Wheelloaders

To full fill the needs and demands of her customers Tobroco offers a wide range of wheel loaders. This range consists out of 25 different types of loaders with a service weight between 1000 kg and 4150 kg. In this leaflet, we will show you our special V6004T Tele. This machine is characterized by the telescopic lifting arm. For further information about other types and implements we refer to our other leaflets or our website (www.tobroco.com).

Quality

The heart of the machine has top class components Kubota diesel engine, Bosch Rexroth hydraulic pumps, heavy drive shaft line Comer planetary axles, heavy duty 14 ton with 100% electr. differentiallock, construction and assembly in the Dutch Oisterwijk ensure that the Giant wheelloaders economical clean and super reliable.



● V6004T Tele 60 pk / 44 kW

Modern Kubota diesel engine, Bosch Rexroth hydraulics, Heavy 14 tons planetary drive-line with highspeed, 0-28 km/h, 100% electric sper differential.

For working with potentially falling objects is the use of a FOPS safetyroof mandatory.

Comfortable workplace

The Giant wheelloader is equipped with ROPS / FOPS safety roof, air suspended seat with armrests, adjustable steering column, safety doors, adjustable dashboard, vibration-damped workplace.

Also available with:

Safetyroof Deluxe: 2 working lights , 2 rear working lights, window in the front and window rear with wipers and 2 mirrors.

Cabin: enclosed cab with heating and ventilation, radio mp3 player, insulation package, 2 working lights front, 2 rear working lights, mirrors, front and rear wiper.



Tyres choice



15/55x17 AS
(85x39 cm)
153 cm machine
width



19/45x17 AS
(86x49 cm)
162 cm machine
width



500/40x17.5 flota 3
(88x50 cm)
164 cm machine
width

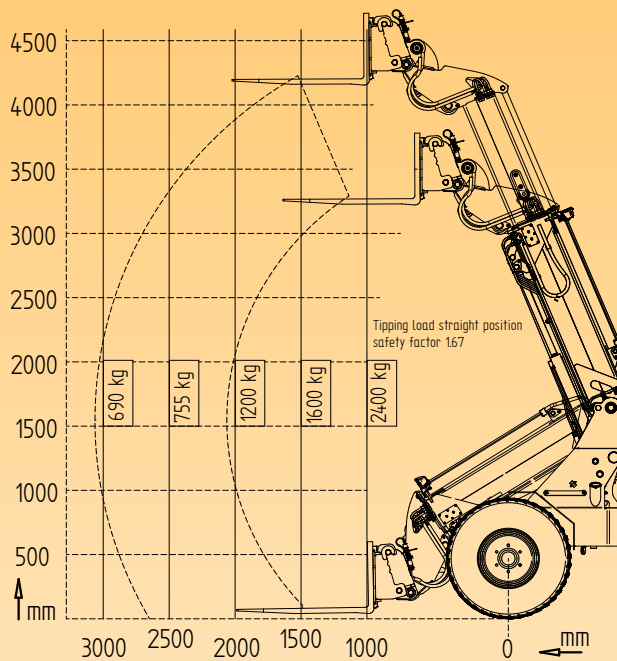
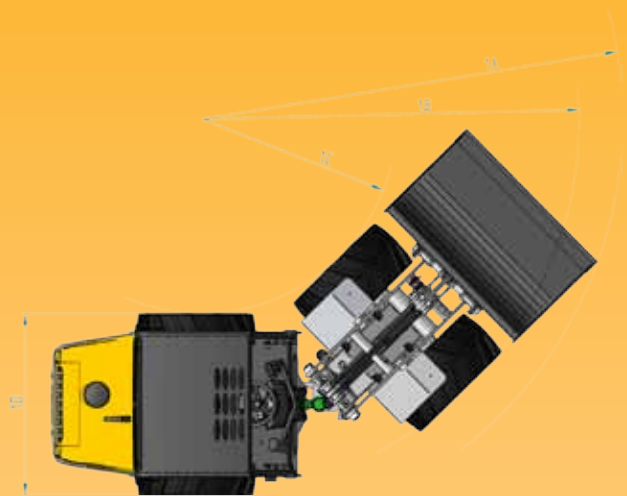
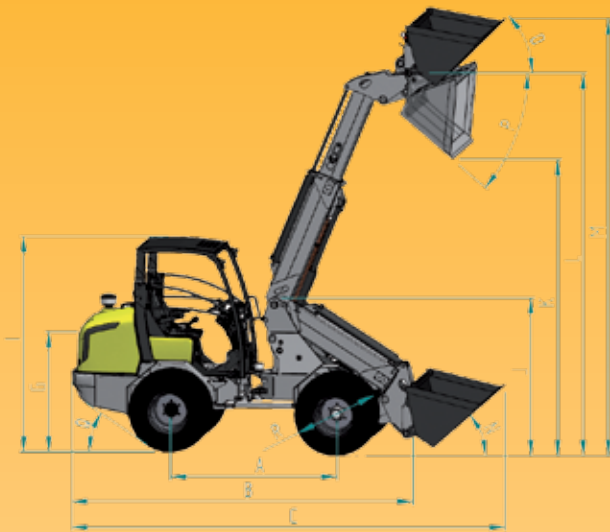


445/45x19.5 Kargo
(94x45 cm)
165 cm machine
width



500/45x20.5 AS
(98x50 cm)
165 cm machine
width

Technical data



		V6004T Tele
A	Wheelbase	1911
B	Total length	3997
C	Length with bucket	4818
G	Seat height	1256
H	Min. hoogte rolbeugel	1740
I	Max. height with Rops/Fops roof	2358
	Max. height with cabin	2350
J	Height front frame	1736
K	Max dump height	2477 / 3102
L	Max. height bucket pin	3379 / 4312
M	Height with bucket	4004 / 4937
N	Roll back angle ground level	41°
O	Roll back angle	47°
P	Max dump angle	40°
Q	Max. drive angle	30°
R	Diameter standard tyre	850
1A	Maximum radius	3281
1B	Outer turning radius	2859
1C	Inner turningradius	1476
1D	Width	1520

Sizes in mm, on standard tyres

Made in Holland

The Giant wheelloaders build according to the modern lean-manufacturing process in the new factory in Oisterwijk (Netherlands) The machines find their way to satisfied end-users across Europe.

		V6004T Tele
Engine		4 cyl. Kubota Turbo 60 hp / 44 kW
Serviceweight		3850 kg
Driving hydraulics		Hydrostatic automotiv
Driving speed		0-10 km/h / 0-25 km/h
Driveline		Planetary axles 14 ton
Diff. lock		Electr.-hydraulic engagement 100%
Standard tyres		15/55x17 AS (152 cm machine width)
Brake		Hydraulic
Parkingbrake		Drumbrakes
Quick linkage		Giant with hydr. quick-fit linkage
Driving hydraulics		135 ltr/min (380 bar)
Working hydraulics		65 ltr/min (200 bar)
Lifting capacity		2000 kg
Tippingload straight		1000 kg / 2000 kg

Working height

With a lifting height of 4.25 meters, the Tele machines easily be used for all loading and unloading activities.

Tippingload

With the mast lowered the tippingload is 2000 kg on the forks, with the mast retracted the tipping load is 1000 kg on the palletforks.



Wheelloaders

Giant wheel loaders are totally designed and produced in own management in Oisterwijk (the Netherlands). In 2009 Tobroco Machines has started with the development for new models for the existing range. These new models will replace the existing ones.

For development Tobroco Machines is using a sophisticated 3-dimensional design program. Thus before taken a machine in production, it's performance can be tested already. During the development of the new models Tobroco takes care of the demands and needs of their customers. Tobroco is a specialist in compact wheelloaders.

In the modern plant in Holland they build the Giant wheelloaders. We work with the best suppliers: Kubota, Rexroth. Giant is robust, durable and quality made in Holland! Also Tobroco Machines offers you a very big variety of implements. The majority of these implements is designed and produced by Tobroco Machines, and because of this, the implements are optimally adapted for your Giant, which is more efficient this way.



GIANT MADE IN HOLLAND



Tobroco Machines

Beneluxstraat 4
5061 KE Oisterwijk, Holland
Tel: +31 (0)13 521 12 12
Fax: +31 (0)13 523 40 45
E-mail: info@tobroco.nl
Internet: www.tobroco.com

