



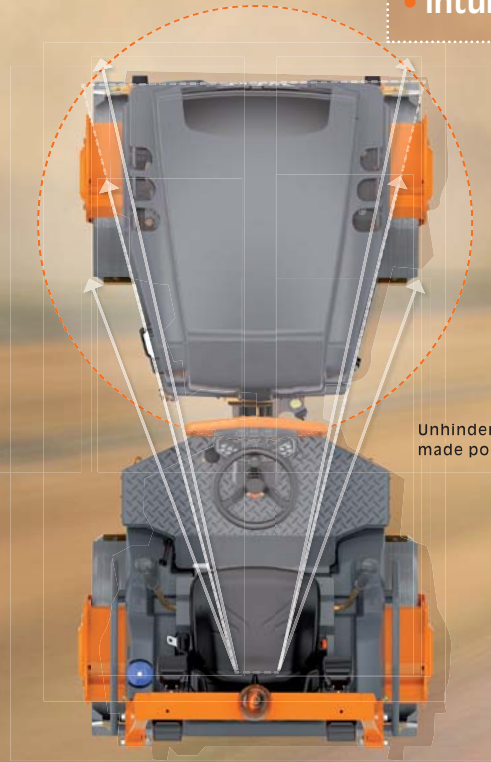


A bird's eye view shows the driver's perfect view of his machine and of the surface being compacted.



An ergonomically-designed grab handle in the centre of the machine allows rapid and safe access. On the HD 8-12, it also serves as the central suspension point for loading and unloading the machine.

- perfect visibility
- outstanding driving comfort
- top-quality compaction performance
- intuitive operation



Unhindered view of the drum edges – made possible by the roller's wasp-waist!

## Outstanding visibility

HD CompactLine rollers offer drivers an unrestricted view of the drum edges and the working environment in front, behind and at the sides of the machine. Perfect visibility is achieved thanks to a clever design idea: mounting the engine longitudinally. The engine hood was accordingly designed with a conical profile – thus producing the "wasp-waist" outline.



## Compact construction

Even when the going gets tight, HD CompactLine rollers can work nearly everywhere – the compact construction of these tandem rollers makes them slim enough for most jobs. And with their low height they can ideally be used in areas with low ceiling heights. With the optional foldable ROPS the rollers can be made even smaller for transport.

## Outstanding driving comfort

Thanks to the three-point articulated joint and the flexible positioning of the driver's seat, HD CompactLine rollers offer a unique level of driving comfort. The articulated joint effectively acts as a shock absorber and provides excellent directional stability, good stability in turns and a high degree of stability against overturning.

# CompactLine HD 8 – HD 14

## The flexible all-rounder

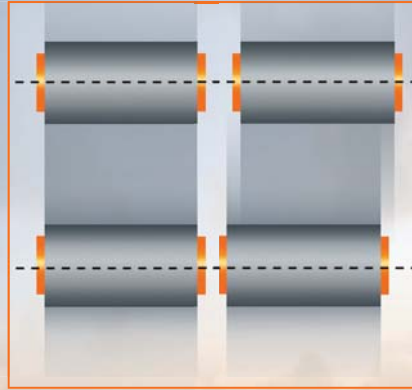


## Compaction power that sets a benchmark

HD CompactLine rollers have significantly larger drum diameters than those found on other machines in their class. High levels of compaction performance – primarily via vibration compaction – are combined with extremely low centres of gravity: depending on the model, the centrifugal force can be up to 80% greater than that of comparable machines of the same class. In addition, the three-point articulated joint ensures uniform weight distribution between the front and rear drums.

## Side clearance – a serial feature

All HD CompactLine rollers offer extremely high levels of side clearance. Machines with weights of 2.5 tonnes and over (HD 10 – HD 14) with drums mounted on both sides can be operated with an offset of 50 mm in crab-steering mode, allowing for perfect compaction even on narrow lanes and along curbs.



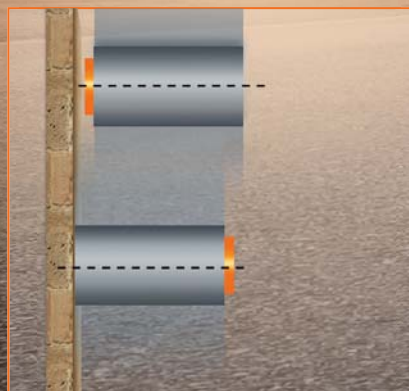
HD 10 – HD 14: 50 mm offset on both sides in crab steering mode facilitates handling.



The HD CompactLine range impresses both with its performance as well as with environmental protection. Despite exceptionally high engine power – especially with the larger machines in the series – noise levels have been markedly reduced.

## “Clear side”: compaction right up to the edge

The clever “clear side” design of the HD 8 and HD 10C allows for compaction right up to the edge: the drums are mounted on only one side and laterally offset by 56 mm. No other components jut out beyond the working width. The drum offset ensures that the rollers are always manoeuvrable, because steering is possible at all times.



Single-side drum attachment on the HD 8 and HD 10C models ensures complete compaction right up to the edge.



# Quality and performance to meet the highest requirements



The CompactLine range lives up to its name: the HD 8 – HD 14 tandem rollers offer compact dimensions, sensational compaction power and high levels of side clearance.

# HD CompactLine

## ▶ The new generation HD series

### 1 ▶ Perfect visibility

A conical front carriage and the longitudinal mounting of the engine allow a perfect view of the drum edges, the machine surroundings and the construction site.

### 2 ▶ Grab handle

2 in 1: the access handle also serves as a central suspension point for loading and unloading the machine (HD 8 – HD 12).

### 19 ▶ Control panel

Language-neutral, intuitive operation. The control panel is lockable for secure protection against vandalism.

### 18 ▶ Levers

Two levers for comfortable two-sided steering (second lever is optional on the HD 8 and HD 10C).

### 17 ▶ Up-to-date engine technology

KUBOTA water-cooled 3 or 4 cylinder motor with indirect injection. Motors on HD 10 – HD 14 models meet EU Stage III A and US EPA Tier IV Interim requirements and those fitted on the HD 8 and HD 10C models already comply with US EPA Tier IV Final specifications. Low noise emission and extremely safe operation guaranteed.

### 16 ▶ Vibration

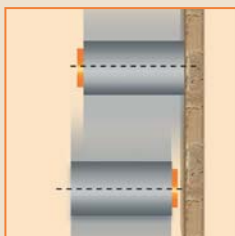
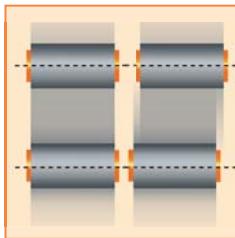
All tandem rollers are fitted with vibrating units in both drums.

### 15 ▶ Variable vibration frequency

Accelerator pedal provided with integrated step control. Facilitates changes of vibration frequency at different engine speeds.

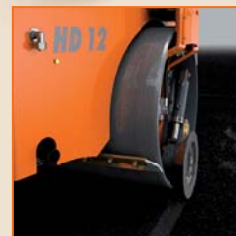
### 14 ▶ Crab operation

± 50 mm offset in crab steering mode on all machine models from 2.5 tonnes upwards (HD 10 – HD 14). This provides optimal manoeuvrability in narrow spaces, restricted areas and around obstacles.



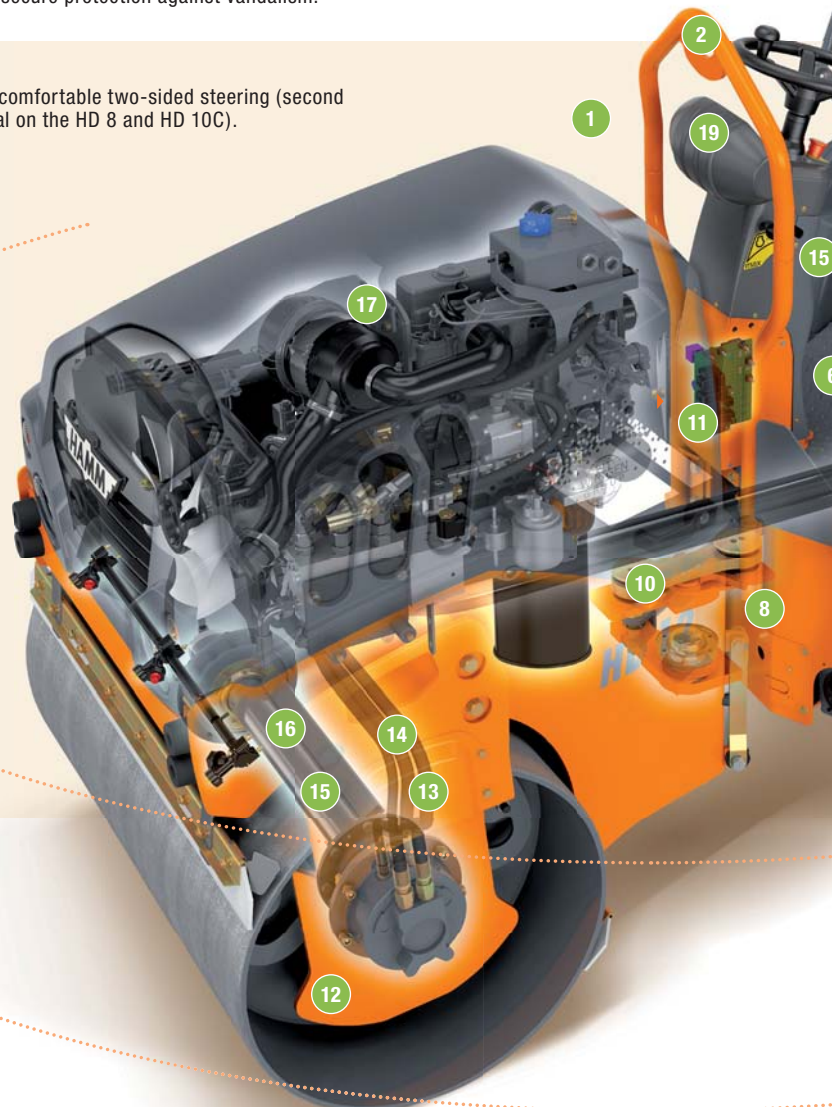
### 13 ▶ Clear Side

Compaction right up to the edge: single-side drum attachment on the HD 8 and HD 10C models ensures complete compaction right up to the edge. 56 mm drum offset for excellent steering and manoeuvrability in any situation.



### 12 ▶ KAG

Edge pressing and cutting equipment including track indicator for clean chamfering of the roadway. Can be mounted on the left, on the right, or on both sides of the machine. Clearly visible from the driver's platform. Available on the HD 10 – HD 14 models.





**3 ▶ ROPS**

Maximum safety due to ROPS frame. Optionally available with simple folding mechanism for maximum flexibility during transport.

**4 ▶ Water and diesel tanks**

Generous tank volumes for fuel and water storage. Convenient refilling and refuelling.

**5 ▶ Driver's platform**

Operating platform entirely insulated against vibration stresses for maximum driver's comfort. Vibration stresses significantly reduced thanks to the mechanical isolation of the driving seat, steering column, levers and footplate from the frame.



**6 ▶ Freedom of movement**

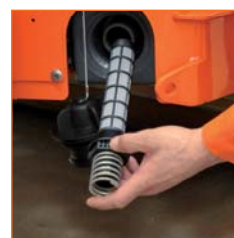
Large operator platform with maximum legroom. Seats can be adjusted forwards or backwards. With the HD 10 to HD 14, seats can also be adjusted laterally, ensuring optimal views of the sides of the machine.

**7 ▶ Large drum diameters**

Drums with large diameters actively reduce tears and overlaps, ensuring high-quality compaction.

**8 ▶ Low centre of gravity**

Low centre of gravity thanks to intelligent positioning of components. Great stability against overturning due to three-point articulated joint.



**9 ▶ Water filter**

Self-cleaning water filter and water drain positioned at lowest point of the machine for complete drainage.

**11 ▶ Central electric**

Central electric incorporated in the steering column for rapid servicing and easy maintenance.

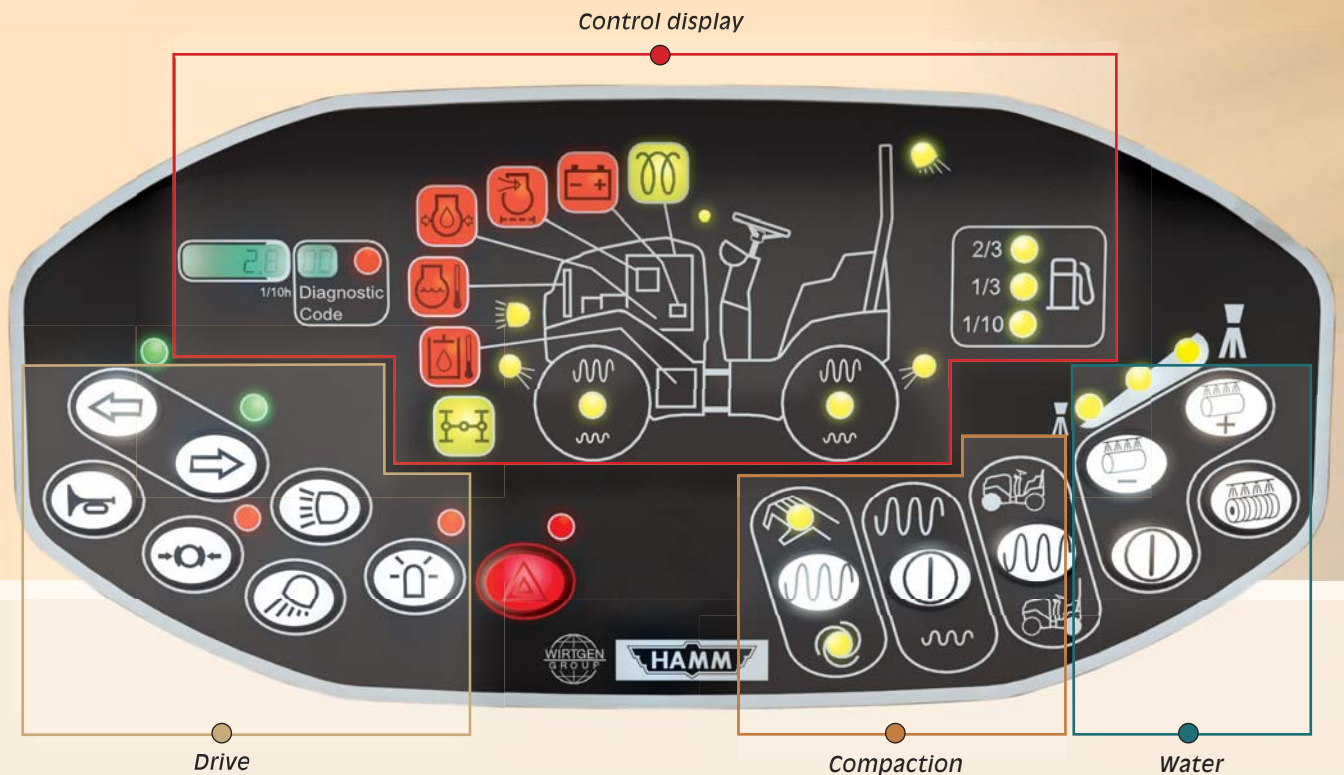
**10 ▶ Articulated joint**

High level of driving comfort thanks to three-point articulated joint: effective shock absorption, outstanding directional stability, good stability in turns, high degree of stability against overturning and even weight distribution between front and rear drums.



Type	Roller drum width (m)	Operating weight (kg)	Engine Power (kW)
HD 8 VV	0,80	1.580	14,8
HD 10C VV	1,00	1.670	14,8
HD 10 VV	1,00	2.480	22,9
HD 10 VT	1,00	2.335	22,9
HD 12 VV	1,20	2.705	22,9
HD 12 VT	1,20	2.620	22,9
HD 13 VV	1,30	3.970	34,6
HD 13 VT	1,30	3.820	34,6
HD 14 VV	1,40	4.345	34,6
HD 14 VT	1,40	3.985	34,6
HD 14 TT	1,28	3.475	34,6

# Intuitive operation



## One glance is sufficient ...

... for any roller driver to get started. HD CompactLine operation can be mastered in just a few minutes. The clear, unambiguous marking of the control panel makes operation intuitive.

The smaller rollers, in particular, are often driven by various machine operators. The intuitive functioning of the HD CompactLine models thus ensures both safety and economical efficiency, achieving safe and productive compaction right from the start. This is a tangible advantage and one particularly valued by rental companies. They opt for HD 8 – HD 14 rollers because they are compact, efficient, and particularly easy to operate.



Water and additive sprinkling can be activated via a foot switch (optional).



The driver's seat can be effortlessly shifted from one side to the other (HD 10 – HD 14).



Ergonomically designed and conveniently positioned lever.







# Comfort & design

## Maximum freedom of movement

The innovative shape with the wasp-waist provides a variety of advantages, including not only outstanding visibility but also a comfortable driving position, offering more legroom that is unmatched in rollers of this class.



Even tall drivers with long legs can work comfortably on the extra-wide operating platform.

## Vibration-insulated lever and operating platform

The driver's seat, steering column, lever and footplate are mechanically isolated from the frame. This significantly reduces the degree of vibration experienced by the driver and makes working with HD Compact-Line rollers even more enjoyable.



The flexible mounting of the driver's platform helps prevent the transmission of machine vibration to the operating platform.



## Outstanding design

As the only machines in its class, HAMM's CompactLine rollers have been recognized numerous times for their excellent design features. The tandem rollers with articulated joint have won two of the leading international design prizes: the "IF Gold Award" and the "red dot". The jurors were particularly impressed with the high level of aesthetic quality coupled with outstanding ergonomics and functionality.



# Versatility



## Talented all-rounder

The tandem rollers with articulated joint are designed to cope with a wide range of terrains and surface conditions. They are able to compact both road beds and binder courses, as well as all standard and special asphalts currently used in road construction. Rollers in the 2.5 – 4 tonne range (HD 10 – HD 14) are particularly suited for the compaction of open-pored asphalts.

The rollers are also perfectly suited for compaction in building construction, for example within halls. Their excellent climbing ability even on steep inclines makes them ideal for operation in multi-storey car parks. A further important field of application is the compaction of non-cohesive surfaces such as gravel, chippings or even sand in landscaping.



## Rapid loading

HAMM ensured that the HD CompactLine rollers are quickly ready for operation by designing the machines for rapid loading: via the centrally positioned nook in the grab handle, tandem rollers HD 8 to HD 12 are swiftly loaded. Additional lashing points ensure that the rollers can be quickly and safely secured to the transporting vehicle.

## Combating vandalism

Construction sites are often poorly monitored overnight and at weekends. A robust, lockable cover prevents access to the control panel and thus protects the smaller rollers of the HD series from any unauthorised interference.

The right machine for every job: with 11 rollers ranging from 0.8 – 1.40 m working width and from 1.2 – 4.7 tonnes in weight, the HD CompactLine range covers every application requirement.



The protective cover prevents unauthorised operation and deters vandalism.

# Easy servicing = good servicing

## Rapid servicing

HD CompactLine rollers are quickly serviced and easy to maintain. All important servicing points of the motor and hydraulic units are arranged on one side. They are quickly and easily identified under a wide-opening engine cover and are readily accessible without the need for additional tools.

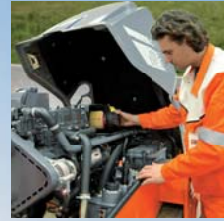
The water tank drain is located at the lowest point of the machine – directly under the driving seat. The water tank and its associated circuitry can be fully drained by a simple manual operation.



Large filling nozzle for hydraulic oil.



Easily accessible filters.



Convenient inspection – thanks to the wide-opening engine cover.



Inspection in a matter of seconds: the large-sized, self-cleaning water filter is located directly behind the tank lock.



Easily accessible: the well-positioned engine oil dipstick.





**HAMM AG**  
Hammstrasse 1  
D-95643 Tirschenreuth  
Tel +49 9631/ 80-0  
Fax +49 9631/ 80-111  
[www.hamm.eu](http://www.hamm.eu)