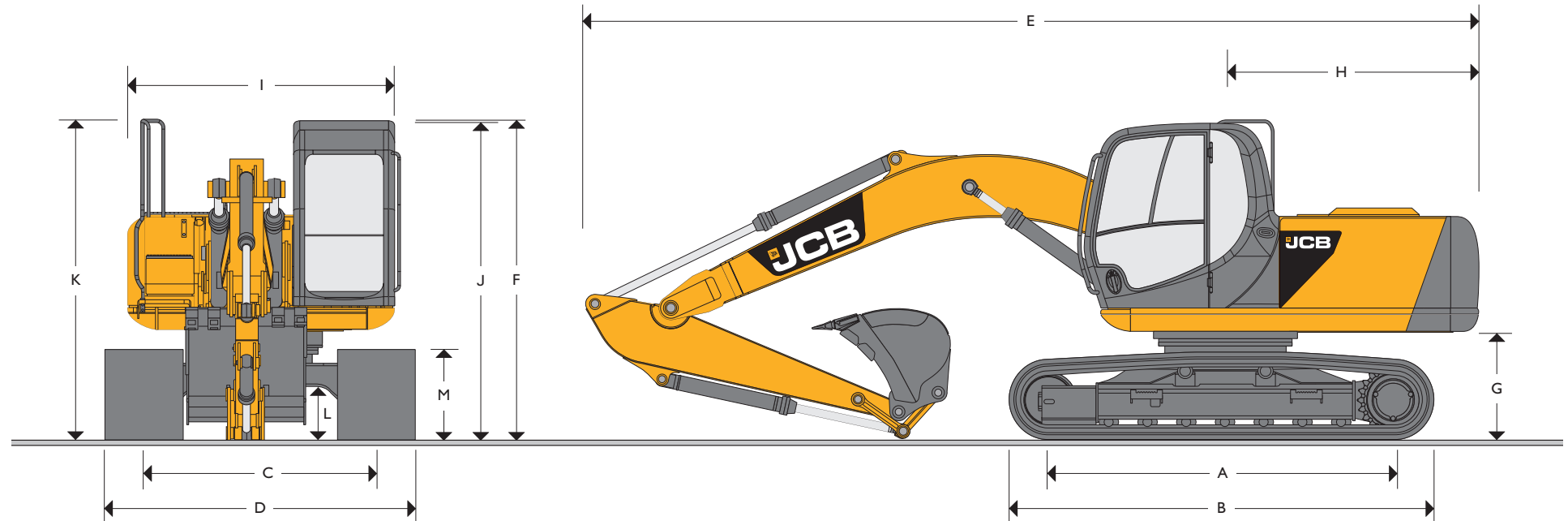




MAX. OPERATING WEIGHT: 19398 kg (42753 lb) ENGINE POWER: 97 kW

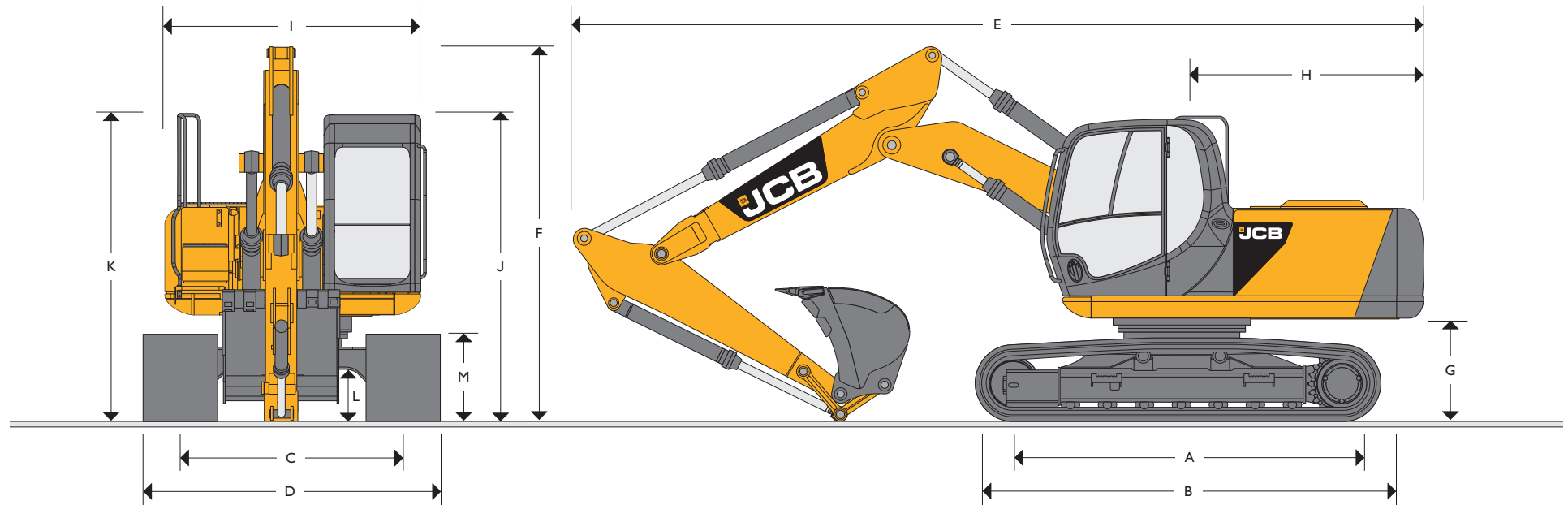


STATIC DIMENSIONS – JS180NLC/LC MONOBOOM

Dimensions in millimetres (ft-in)		NLC	LC	Dimensions in millimetres (ft-in)	
A	Track length on ground	3370 (11-1)	3370 (11-1)	G	Counterweight clearance
B	Undercarriage overall length	4170 (13-8)	4170 (13-8)	H	Tail swing radius
C	Track gauge	1990 (6-6)	2200 (7-2)	I	Width of superstructure
D	Width over tracks (500mm trackshoes)	2490 (8-2)	–	J	Height over cab
D	Width over tracks (600mm trackshoes)	2590 (8-6)	2800 (9-2)	K	Height over grab rail
D	Width over tracks (700mm trackshoes)	2690 (8-10)	2900 (9-6)	L	Ground clearance
D	Width over tracks (800mm trackshoes)	–	3000 (9-10)	M	Track height
Dipper lengths		2.25m (7ft 5in)	2.7m (8ft 10in)	3.05m* (10ft 0in)	
E	Transport length with Monoboom	8366 (27-5)	8326 (27-4)	*Machine in transport position	
F	Transport height with Monoboom	3014 (9-10)	3014 (9-10)		



MAX. OPERATING WEIGHT: 20162 kg (44437 lb) NETT ENGINE POWER: 97 kW



STATIC DIMENSIONS – JS180NLC/LC T.A.B.

Dimensions in millimetres (ft-in)		NLC	LC	Dimensions in millimetres (ft-in)	
A	Track length on ground	3370 (11-1)	3370 (11-1)	G	Counterweight clearance
B	Undercarriage overall length	4170 (13-8)	4170 (13-8)	H	Tail swing radius
C	Track gauge	1990 (6-6)	2200 (7-2)	I	Width of superstructure
D	Width over tracks (500mm trackshoes)	2490 (8-2)	–	J	Height over cab
D	Width over tracks (600mm trackshoes)	2590 (8-6)	2800 (9-2)	K	Height over grab rail
D	Width over tracks (700mm trackshoes)	2690 (8-10)	2900 (9-6)	L	Ground clearance
D	Width over tracks (800mm trackshoes)	–	3000 (9-10)	M	Track height
Dipper lengths		2.25m (7ft 5in)	2.7m (8ft 10in)	3.05m* (10ft 0in)	
E	Transport length with Monoboom	8652 (28-5)	8674 (28-5)	*Machine in transport position	
F	Transport height with Monoboom	2876 (9-5)	2760 (9-1)	2823 (9-3)	



ENGINE

Model	JCB Dieselmax 444 TCAE-97 Tier III emissions compliant.
Type	Water cooled, 4-stroke, 4-cylinder in-line, direct injection, turbocharged diesel.
Nett power (ISO 3046-1NF)	97kW at 2200rpm.
Piston Displacement	4.399 litres.
Injection	Electronic governor.
Air Filtration	Dry element with secondary safety element and in cab warning indicator.
Cooling	Large capacity radiator.
Starting system	24 volt – 4kW.
Batteries	2 x 12 volt Heavy Duty.
Alternator	24 volt 55 amp.
Refuelling pump	Electric type.

SWING SYSTEM

Swing motor	Axial piston type.
Swing brake	Hydraulic braking plus automatic spring applied disc type parking brake.
Final drive	Planetary reduction.
Swing speed	10.4 rpm.
Swing gear	Large diameter, internally toothed fully sealed grease bath lubricated.
Swing lock	Multi position switchable brake.

UNDERCARRIAGE

Carriage options	NLC-Narrow and LC-Long Carriage.
Construction	Fully welded, "X" frame type with central bellyguarding and track motor guards. Sloping sidemembers with dirt relief holes under top rollers.
Recovery point	Front and rear.
Track type	Sealed and greased.
Track shoe options	NLC – 500mm (20in), 600mm (24in), 700mm (28in). LC – 600mm (24in), 700mm (28in), 800mm (31.5in).
Upper & lower rollers	Heat treated, sealed and lubricated.
Track adjustment	Grease cylinder type.
Track idler	Sealed and lubricated, with spring cushioned recoil.
NLC & LC	
No. of track guides	2 per side
No. of lower rollers	7 per side
No. of upper rollers	2 per side
No. of track shoes	46 per side

HYDRAULIC SYSTEM

A variable flow load sensing system with flow on demand, variable power output and servo operated, multi-function open centre control. Machine auto warm up standard – maximises performance in cold conditions.

Pumps

Main pumps	2 variable displacement axial piston type.
Maximum flow	2 x 164 L/min.
Servo pump	Gear type.
Maximum flow	20.5 L/min.

Control valve

A combined ten spool control valve with auxiliary service spool as standard. When required twin pump flow is combined to boom, dipper and bucket services for greater speed and efficiency.

Relief valve settings

Boom/Arm/Bucket	314 bar (4610lb/sq.in)
With power boost	343 bar (4975lb/sq.in)
Swing circuit	279 bar (4045lb/sq.in)
Travel circuit	343 bar (4975lb/sq.in)
Pilot control	40 bar (569lb/sq.in)

A separate Cushion Control valve in the servo system provides cushioning of the boom and dipper spools selection and quick warm-up of the servo system.

Hydraulic cylinders

Double acting type, with bolt-up end caps and hardened steel bearing bushes. End cushioning is fitted as standard on boom, dipper and bucket rams.

Optional hose burst check valves available for boom and dipper rams.

Filtration

The hydraulic components are protected by the highest standard of filtration to ensure long hydraulic fluid and component life.

In tank	150 micron, suction strainer.
Main return line	10 micron, fibreform element.
Plexus Bypass line	1.5 micron, paper element.
Pilot line	10 micron, paper element.
Hydraulic hammer return	10 micron, reinforced microform element.

Cooling

Worldwide cooling is provided as part of a single face cooling pack, in conjunction with the engine water cooler.

TRACK DRIVE

Type	Fully hydrostatic, three speed with autoshift between high and medium speed.
Travel motors	Variable swash axial piston type, fully guarded within undercarriage frame.
Final drive	Planetary reduction, bolt-on sprockets.
Service brake	Hydraulic counter balance valve to prevent overspeeding on gradients.
Park brake	Disc type, spring applied, automatic hydraulic release.
Gradeability	70% (35 deg) continuous.
Travel speed	High – 5.2 kmh (3.2 mph). Mid – 3.3 kmh (2.1 mph). Low – 1.8 kmh (1.1 mph).
Tractive effort	153 kN (15602 kgf, 34396 lbf).



EXCAVATOR END – MONOBOOM

Monoboom available along with a choice of dipper lengths to suit the requirements of reach, dig-depth, loadover height, tearouts and site versatility. Reserve strength is built into the fully welded structures for hydraulic hammer and other arduous operations. Fabricated bucket tipping links are provided with a choice of lift points. Strong, durable construction, large cross sections and multi plate fabrications to withstand high stress applications. The 5.15m (16ft 11in) boom is designed to ensure the optimum digging envelope when matched with the three dipper lengths. Low maintenance bronze alloy bushes with graphite plugs are fitted to boom base and boom to dipper pivots resulting in 1000 hour greasing intervals at these points.

EXCAVATOR END – T.A.B.

Triple Articulated Boom (T.A.B.) with a choice of dipper lengths to suit the requirements of reach, dig-depth, loadover height, tearouts and site versatility. Reserve strength is built into the fully welded structures for hydraulic hammer and other arduous operations. Fabricated bucket tipping links are provided with a choice of lift points.

CAB

Excellent digging, loading and positioning visibility results from the careful design of front, side and roof lights. All screens are tinted to improve in cab conditions. Fully opening front screen is very smooth to operate and as the lower screen is stored within the top screen frame it makes complete front screen opening easy, fast and convenient. Fresh air ventilation available from opening door window, opening slot in front screen and fully opening front screen. Parallelogram wash wiper for upper screen ensuring good wiped area for maximum visibility. Wiper motor is fitted in the left hand side of the roof screen so as not to affect bucket visibility when loading. Optional lower screen wiper available. Fresh air ventilation and heater with windscreen demister. Infinitely variable blower speed, temperature and recirculation control. Optional climate control. Fully adjustable deluxe suspension seat with arm rest adjustment and backrest recline. Optional radio with digital tuner fitted into the roof lining for maximum protection. Conveniently placed radio mute button incorporated into lower console. 12v power point and mobile phone holder built into the right hand console. Courtesy light can be operated from ground level and is illuminated for five minutes or until switched off improving operator access at night. Cab mounted roller blind protects operator from suns' glare through front or top screens.

AMS – ADVANCED MANAGEMENT SYSTEM

Four selectable working modes link the operators control movements with the engine and hydraulic systems to maximise productivity and efficiency.

A (Auto) Up to 100% engine power and 100% flow. Gives variable power and speed depending on the operator's input, matching the demand for output and efficiency to the job. Power boost is automatically activated in this mode should hard conditions be encountered. Auto idle cuts in after a period of inactivity (between 5 and 30 seconds as set by the operator)

E (Economy) 80% engine power: 95% of hydraulic flow maximises economy while maintaining excellent output.

P (Precision) 55% engine power: 90% of hydraulic flow for fine control of grading operations.

L (Lifting) 55% engine power: 63% of hydraulic flow with permanent power boost for maximum lifting power and control.

The Auto mode allows the AMS processor to select the optimum operational performance to match the demands of the job while the three alternative modes give precise matching of application when specific tasks are undertaken.

The adjustable position monitor mounted on the front right hand pillar of the cab gives the operator a constant read out of mode, tracking range, operating temperature and a host of other information, while retaining excellent visibility of the monitor and the job being carried out.

The required flow for hammer applications can be set and stored in the AMS memory and is automatically activated whenever the hammer pedal is depressed.

A maintenance indicator warns of imminent service needs, and all servicing and basic checks can be carried out using only the in cab display.

CONTROLS

Excavator All servo lever operated to ISO control pattern, independently adjustable to the seat.

Tracks Individually servo operated by foot pedal or hand lever. Speed selection via joystick button.

Auxiliary Via servo operated foot pedal.

Control isolation Via gate lock lever at cab entrance or panel switch.

Engine speed Dial type throttle control plus servo lever mounted one-touch idle control or separate selectable auto-idle with adjustable time delay using AMS.

Engine stop Ignition key operated and separate shut-down button.

Horn Operated via servo lever mounted button.



SERVICE CAPACITIES

	Litres	UK Gal
Fuel tank	220	48.5
Engine coolant	19.7	4.4
Engine oil	20.4	4.5
Swing reduction gear	6	1.3
Track reduction gear (each side)	4.4	0.97
Hydraulic system	142.0	31.2
Hydraulic tank	73.0	16.1

WEIGHTS AND GROUND BEARING PRESSURES

JS180NLC Mono – Machine equipped with 5.15m Monoboom, 3.05m Dipper, 0.9m³ Bucket, operator and full fuel tank.

Shoe Width	Operating Weight	Bearing Pressure
500mm (20in.)	18296kg (40324lb)	0.54kg/sq. cm. (7.72lb/sq. in.)

JS180LC Mono – Machine equipped with 5.15m Monoboom, 3.05m Dipper, 0.9m³ Bucket, operator and full fuel tank.

Shoe Width	Operating Weight	Bearing Pressure
600mm (24in.)	18857kg (41561lb)	0.47kg/sq. cm. (6.63lb/sq. in.)
700mm (28in.)	19110kg (42118lb)	0.41kg/sq. cm. (5.76lb/sq. in.)
800mm (32in.)	19398kg (42753lb)	0.36kg/sq. cm. (5.12lb/sq. in.)

JS180NLC T.A.B. – Machine equipped with 5.35m T.A.B. boom, 3.05m Dipper, 0.9m³ Bucket, operator and full fuel tank.

Shoe Width	Operating Weight	Bearing Pressure
500mm (20in.)	19060kg (42008lb)	0.57kg/sq. cm. (8.04lb/sq. in.)

JS180LC T.A.B. – Machine equipped with 5.35m T.A.B. boom, 3.05m Dipper, 0.9m³ Bucket, operator and full fuel tank.

Shoe Width	Operating Weight	Bearing Pressure
600mm (24in.)	19621kg (43245lb)	0.49kg/sq. cm. (6.90lb/sq. in.)
700mm (28in.)	19874kg (43802lb)	0.42kg/sq. cm. (5.99lb/sq. in.)
800mm (32in.)	20162kg (44437lb)	0.37kg/sq. cm. (5.32lb/sq. in.)

STANDARD EXCAVATING BUCKETS

All buckets are JCB – Escó type fully welded steel, with sealed, hardened steel pivot pins and replaceable wear parts.

Max Width	Capacity (SAE heaped)	Weight
600mm (24in.)	0.35cu.m (0.46cu.yd)	396kg (873lb)
750mm (30in.)	0.49cu.m (0.64cu.yd)	448kg (988lb)
900mm (36in.)	0.62cu.m (0.81cu.yd)	489kg (1078lb)
1000mm (40in.)	0.72cu.m (0.94cu.yd)	526kg (1160lb)
1200mm (48in.)	0.90cu.m (1.18cu.yd)	592kg (1305lb)

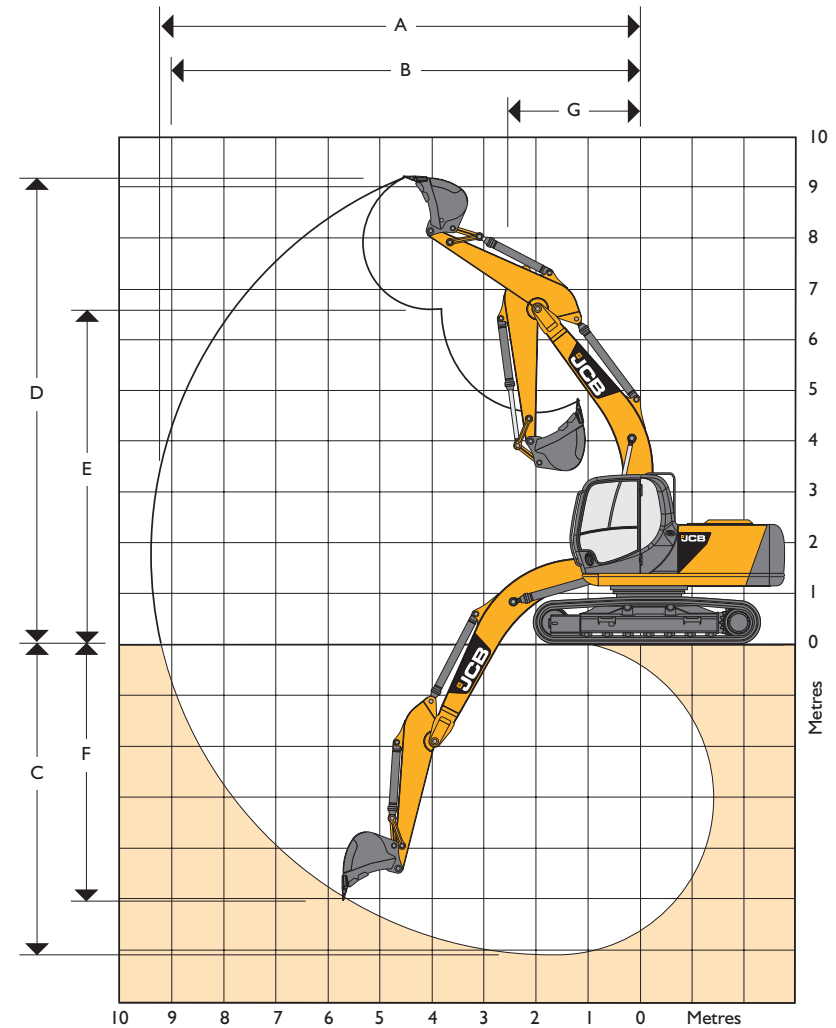
STANDARD / OPTIONAL EQUIPMENT

Standard Equipment: Engine fan guard; Cold start pre-heat; Auto engine warm up; Double element air cleaner; Heavy duty alternator; Electrics isolator; Heavy duty batteries; Cab & engine soundproofing; Cab heater & screen demister; Tinted glass; Interior light; Coat hook; Cigarette lighter; Ashtray; Operator's storage shelf; Removable floor mat; Windscreen wash/wipe; Plug-in power socket; Automatic power boost; Auto-idle; One-touch engine speed control; Hydraulic cushion control; Plexus hydraulic oil filtration; HSP pressure test points; Auxiliary pipework mounting brackets; Work lights – boom & mainframe mounted; Undercarriage belly guarding; Upper structure under covers; Swing system cover; External mirrors; Handrail & non slip walk ways; Quick connect engine oil drain pipe; Front screen blind; Quick connect fuel tank drain pipe; Hinged engine under cover; Remote filter system.

Optional Equipment: Hose burst check valves & overload warning system; Tipping link mounted lift points; General purpose buckets; Ditch/grading buckets; Quickhitch buckets; Hydraulic hammers; Auxiliary pipework (full and low flow); Climate control; Cab mounted & rear work lights; Rotating beacon; Rain guard; Biodegradable oil; Air suspension seat with heated pad and lumbar support adjustment; Electric refuelling pump; Track guides; Lower screen wiper; Radio; High and low temperature hydraulic oil option.

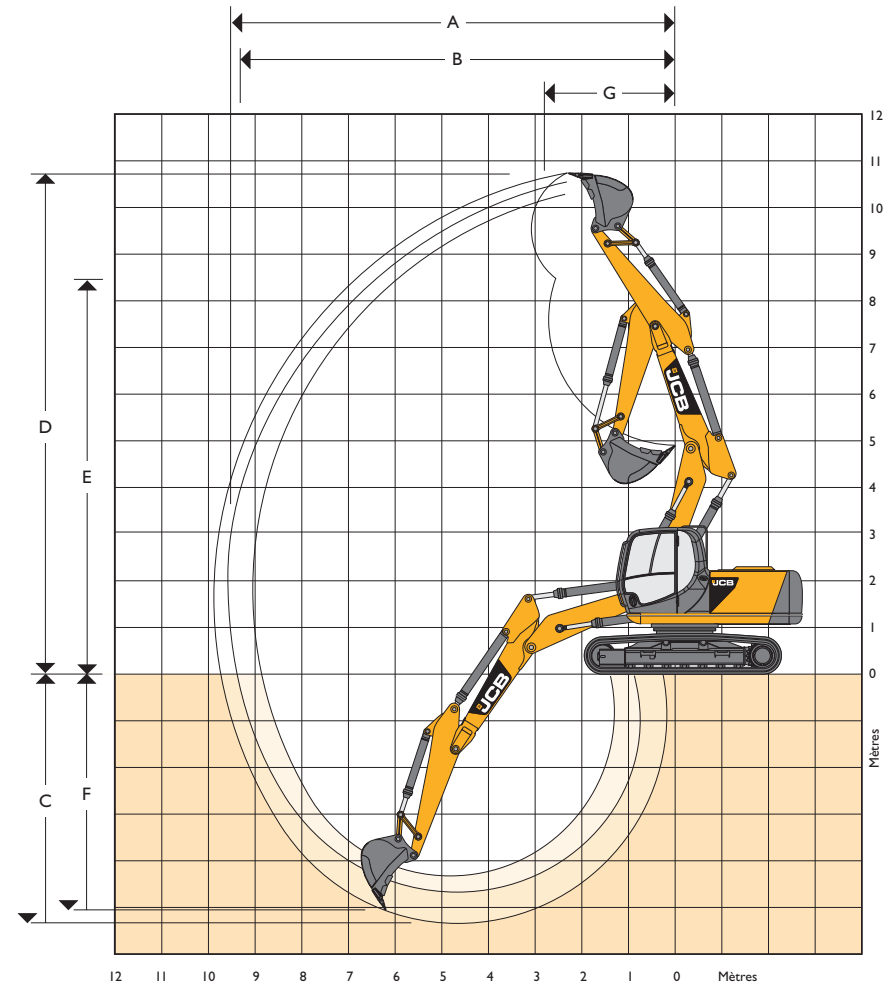
WORKING RANGE – JS180 NLC/LC MONOBOOM

Boom length: 5.15m (16ft 10in)		
Dipper length:		2.25m (7ft 5in)
A	Maximum digging reach	mm (ft-in) 8514 (27-11)
B	Maximum digging reach (on ground)	mm (ft-in) 8368 (27-5)
C	Maximum digging depth	mm (ft-in) 5799 (19-0)
D	Maximum digging height	mm (ft-in) 9398 (30-9)
E	Maximum dumping height	mm (ft-in) 7048 (23-1)
F	Maximum vertical wall cut depth	mm (ft-in) 5229 (17-2)
G	Minimum swing radius	mm (ft-in) 3000 (9-10)
	Bucket rotation	182°
	Maximum dipper tearout (ISO 6015)	kgf (lbf) 8754 (19259)
	Maximum bucket tearout (ISO 6015)	kgf (lbf) 11839 (26104)
Dipper length: 2.70m (8ft 10in)		
A	Maximum digging reach	mm (ft-in) 8908 (29-3)
B	Maximum digging reach (on ground)	mm (ft-in) 8769 (28-9)
C	Maximum digging depth	mm (ft-in) 6252 (20-6)
D	Maximum digging height	mm (ft-in) 9663 (31-8)
E	Maximum dumping height	mm (ft-in) 7321 (24-0)
F	Maximum vertical wall cut depth	mm (ft-in) 5682 (18-8)
G	Minimum swing radius	mm (ft-in) 3000 (9-10)
	Bucket rotation	182°
	Maximum dipper tearout (ISO 6015)	kgf (lbf) 7619 (16764)
	Maximum bucket tearout (ISO 6015)	kgf (lbf) 11839 (26104)
Dipper length: 3.05m (10ft 0in)		
A	Maximum digging reach	mm (ft-in) 9223 (30-7)
B	Maximum digging reach (on ground)	mm (ft-in) 9088 (29-10)
C	Maximum digging depth	mm (ft-in) 6598 (21-8)
D	Maximum digging height	mm (ft-in) 9888 (32-5)
E	Maximum dumping height	mm (ft-in) 7543 (24-8)
F	Maximum vertical wall cut depth	mm (ft-in) 6028 (19-9)
G	Minimum swing radius	mm (ft-in) 3000 (9-10)
	Bucket rotation	182°
	Maximum dipper tearout (ISO 5016)	kgf (lbf) 7003 (15439)
	Maximum bucket tearout (ISO 5016)	kgf (lbf) 11839 (26104)



WORKING RANGE – JS180 NLC/LC T.A.B.

T.A.Boom length: 5.35m (17ft 6in)		
Dipper length:		2.25m (7ft 5in)
A	Maximum digging reach	mm (ft-in) 8831 (29-0)
B	Maximum digging reach (on ground)	mm (ft-in) 8652 (28-5)
C	Maximum digging depth	mm (ft-in) 5354 (17-7)
D	Maximum digging height	mm (ft-in) 10248 (33-7)
E	Maximum dumping height	mm (ft-in) 8000 (26-3)
F	Maximum vertical wall cut depth	mm (ft-in) 4232 (13-10)
G	Minimum swing radius	mm (ft-in) 2170 (7-1)
	Bucket rotation	182°
	Maximum dipper tearout (ISO 6015)	kgf (lbf) 8754 (19259)
	Maximum bucket tearout (ISO 6015)	kgf (lbf) 11839 (26104)
Dipper length: 2.70m (8ft 10in)		
A	Maximum digging reach	mm (ft-in) 9260 (30-5)
B	Maximum digging reach (on ground)	mm (ft-in) 9094 (2-10)
C	Maximum digging depth	mm (ft-in) 5786 (18-11)
D	Maximum digging height	mm (ft-in) 10674 (35-0)
E	Maximum dumping height	mm (ft-in) 8444 (27-8)
F	Maximum vertical wall cut depth	mm (ft-in) 4699 (15-5)
G	Minimum swing radius	mm (ft-in) 2227 (7-3)
	Bucket rotation	182°
	Maximum dipper tearout (ISO 6015)	kgf (lbf) 7619 (16764)
	Maximum bucket tearout (ISO 6015)	kgf (lbf) 11839 (26104)
Dipper length: 3.05m (10ft 0in)		
A	Maximum digging reach	mm (ft-in) 9592 (31-6)
B	Maximum digging reach (on ground)	mm (ft-in) 9463 (31-1)
C	Maximum digging depth	mm (ft-in) 6108 (20-0)
D	Maximum digging height	mm (ft-in) 10822 (35-6)
E	Maximum dumping height	mm (ft-in) 8672 (28-5)
F	Maximum vertical wall cut depth	mm (ft-in) 5211 (17-1)
G	Minimum swing radius	mm (ft-in) 2587 (8-6)
	Bucket rotation	182°
	Maximum dipper tearout (ISO 5016)	kgf (lbf) 7003 (15439)
	Maximum bucket tearout (ISO 5016)	kgf (lbf) 11839 (26104)



LIFT CAPACITIES – Dipper Length: 2.25m, 5.15m Monoboom, Trackshoes: 700mm, No bucket.
JS180 LC MONO

Reach	1.5m (4ft 11in)		3m (9ft 10in)		4.5m (14ft 9in)		6m (19ft 8in)		7.5m (24ft 7in)		Capacity at Max Reach		
													mm
Load Point Ht.	kg	kg	kg	kg	kg	kg	kg	kg	kg	kg	kg	kg	mm
7.5m (24.7ft)					4040*	4040*					3860*	3860*	4537
6.0m (19.8ft)											3330*	3330*	5985
4.5m (14.9ft)					5560*	5560*	5010*	4050			3190*	3190*	6811
3.0m (9.10ft)					6930*	5920	5550*	3920			3230*	2970	7235
1.5m (4.11ft)					8220*	5610	5900	3780			3440*	2860	7330
0m			5370*	5370*	8840*	5450	5800	3690			3870*	2950	7108
- 1.5m (- 4.11ft)	6090*	6090*	10850*	10150	8690*	5420	5780	3670			4740*	3290	6537
- 3.0m (- 9.10ft)			10740*	10320	7590*	5500					5830*	4200	5507

LIFT CAPACITIES – Dipper Length: 2.70m, 5.15m Monoboom, Trackshoes: 700mm, No bucket.
JS180 LC MONO

Reach	1.5m (4ft 11in)		3m (9ft 10in)		4.5m (14ft 9in)		6m (19ft 8in)		7.5m (24ft 7in)		Capacity at Max Reach		
													mm
Load Point Ht.	kg	kg	kg	kg	kg	kg	kg	kg	kg	kg	kg	kg	mm
7.5m (24.7ft)											2800*	2800*	5165
6.0m (19.8ft)							3880*	3880*			2490*	2490*	6471
4.5m (14.9ft)					5000*	5000*	4620*	4080			2400*	2400*	7241
3.0m (9.10ft)			9720*	9720*	6400*	5990	5220*	3940	3220*	2820	2450*	2450*	7641
1.5m (4.11ft)			5040*	5040*	7830*	5650	5900*	3790	4000*	2760	2600*	2600*	7731
0m			6450*	6450*	8670*	5440	5780	3670	3100*	2720	2920*	2710	7521
- 1.5m (- 4.11ft)	5830*	5830*	10170*	10040	8770*	5370	5730	3630			3520*	2980	6985
- 3.0m (- 9.10ft)	9880*	9880*	11560*	10180	8020*	5420	5360*	3680			4880*	3660	6033
- 4.5m (- 14.9ft)			8370*	8370*							5580*	5580*	4396

LIFT CAPACITIES – Dipper Length: 3.05m, 5.15m Monoboom, Trackshoes: 700mm, No bucket.
JS180 LC MONO

Reach	1.5m (4ft 11in)		3m (9ft 10in)		4.5m (14ft 9in)		6m (19ft 8in)		7.5m (24ft 7in)		Capacity at Max Reach		
													mm
Load Point Ht.	kg	kg	kg	kg	kg	kg	kg	kg	kg	kg	kg	kg	mm
7.5m (24.7ft)											2430*	2430*	5738
6.0m (19.8ft)							3890*	3890*			2160*	2160*	6935
4.5m (14.9ft)							4270*	4060	2730*	2730*	2070*	2070*	7657
3.0m (9.10ft)			8600*	8600*	5910*	5910*	4900*	3910	3940*	2780	2080*	2080*	8037
1.5m (4.11ft)			6010*	6010*	7410*	5600	5620*	3730	4200	2710	2180*	2180*	8122
0m			6180*	6180*	8410*	5360	5710	3600	4130	2640	2390*	2390*	7923
- 1.5m (- 4.11ft)	4960*	4960*	9110*	9110*	8680*	5260	5640	3530			2800*	2670	7416
- 3.0m (- 9.10ft)	8470*	8470*	11930*	9950	8160*	5280	5670	3560			3630*	3200	6528
- 4.5m (- 14.9ft)			9250*	9250*	6250*	5460					5160*	4660	5059



Lift capacity front and rear.



Lift capacity full circle.

Notes:

- The above loads are in compliance with SAE and ISO Hydraulic Excavator Lift Capacity Standards.
- They do not exceed 87% of hydraulic lifting capacity or 75% of tipping load.
- Rated loads marked with an asterisk(*) are limited by hydraulic capacity rather than tipping load.

LIFT CAPACITIES – Dipper Length: 2.25m, 5.15m Monoboom, Trackshoes: 500mm, No bucket.
JS180 NLC MONO

Reach	1.5m (4ft 11in)		3m (9ft 10in)		4.5m (14ft 9in)		6m (19ft 8in)		7.5m (24ft 7in)		Capacity at Max Reach		
													mm
Load Point Ht.	kg	kg	kg	kg	kg	kg	kg	kg	kg	kg	kg	kg	mm
7.5m (24.7ft)					4040*	4040*					3860*	3860*	4537
6.0m (19.8ft)											3330*	3330*	5985
4.5m (14.9ft)					5560*	5520	5010*	3580			3190*	2930	6811
3.0m (9.10ft)					6930*	5200	5550*	3460			3230*	2620	7235
1.5m (4.11ft)					8220*	4910	5660	3330			3440*	2520	7330
0m			5370*	5370*	8630	4750	5560	3240			3870*	2590	7108
- 1.5m (- 4.11ft)	6090*	6090*	10850*	8680	8590	4720	5530	3220			4740*	2890	6537
- 3.0m (- 9.10ft)			10740*	8840	7590*	4800					5830*	3690	5507

LIFT CAPACITIES – Dipper Length: 2.70m, 5.15m Monoboom, Trackshoes: 500mm, No bucket.
JS180 NLC MONO

Reach	1.5m (4ft 11in)		3m (9ft 10in)		4.5m (14ft 9in)		6m (19ft 8in)		7.5m (24ft 7in)		Capacity at Max Reach		
													mm
Load Point Ht.	kg	kg	kg	kg	kg	kg	kg	kg	kg	kg	kg	kg	mm
7.5m (24.7ft)											2800*	2800*	5165
6.0m (19.8ft)							3880*	3680			2490*	2490*	6471
4.5m (14.9ft)					5000*	5000*	4620*	3620			2400*	2400*	7241
3.0m (9.10ft)			9720*	9640*	6400*	5270	5220*	3480	3220*	2490	2450*	2410	7641
1.5m (4.11ft)			5040*	5040*	7830*	4940	5670	3330	4000*	2430	2600*	2320	7731
0m			6450*	6450*	8630	4740	5540	3220	3100*	2380	2920*	2370	7521
- 1.5m (- 4.11ft)	5830*	5830*	10170*	8580	8540	4670	5490	3170			3520*	2610	6985
- 3.0m (- 9.10ft)	9880*	9880*	11560*	8700	8020*	4720	5360*	3230			4880*	3200	6033
- 4.5m (- 14.9ft)			8370*	8370*							5580*	5100	4396

LIFT CAPACITIES – Dipper Length: 3.05m, 5.15m Monoboom, Trackshoes: 500mm, No bucket.
JS180 NLC MONO

Reach	1.5m (4ft 11in)		3m (9ft 10in)		4.5m (14ft 9in)		6m (19ft 8in)		7.5m (24ft 7in)		Capacity at Max Reach		
													mm
Load Point Ht.	kg	kg	kg	kg	kg	kg	kg	kg	kg	kg	kg	kg	mm
7.5m (24.7ft)											2430*	2430*	5738
6.0m (19.8ft)							3890*	3680			2160*	2160*	6935
4.5m (14.9ft)							4270*	3600	2730*	2500	2070*	2070*	7657
3.0m (9.10ft)			8600*	8600*	5910*	5270	4900*	3450	3940*	2450	2080*	2080*	8037
1.5m (4.11ft)			6010*	6010*	7410*	4900	5620*	3270	4020	2370	2180*	2100	8122
0m			6180*	6180*	8410*	4660	5470	3140	3950	2310	2390*	2140	7923
- 1.5m (- 4.11ft)	4960*	4960*	9110*	8370	8420	4560	5390	3080			2800*	2330	7416
- 3.0m (- 9.10ft)	8470*	8470*	11930*	8480	8160*	4580	5420	3100			3630*	2800	6528
- 4.5m (- 14.9ft)			9250*	8760	6250*	4750					5160*	4080	5059



Lift capacity front and rear.



Lift capacity full circle.

Notes:

- The above loads are in compliance with SAE and ISO Hydraulic Excavator Lift Capacity Standards.
- They do not exceed 87% of hydraulic lifting capacity or 75% of tipping load.
- Rated loads marked with an asterisk(*) are limited by hydraulic capacity rather than tipping load.

LIFT CAPACITIES – Dipper Length: 2.25m, 5.35m T.A.B., Trackshoes: 700mm, No bucket.
JS180 LC T.A.B.

Reach	3m (9ft 10in)		4.5m (14ft 9in)		6m (19ft 8in)		7.5m (24ft 7in)		Capacity at Max Reach			
Load Point Ht.	kg	kg	kg	kg	kg	kg	kg	kg	kg	kg	mm	
9.0m (29.5ft)										7030*	7030*	2326
7.5m (24.7ft)	5900*	5900*	5800*	5800*						4130*	4130*	5047
6.0m (19.8ft)	5030*	5030*	5830*	5830*	5250*	4030				3490*	3490*	6377
4.5m (14.9ft)	8900*	8900*	7240*	6160	6040*	3970				3250*	2980	7157
3.0m (9.10ft)			8340*	5750	6000	3810	3920*	2730		3200*	2690	7562
1.5m (4.11ft)			8680	5410	5830	3650	5210	2680		3280*	2600	7653
0m			8130*	5260	5720	3560				3540*	2690	7441
- 1.5m (- 4.11ft)	7710*	7710*	6730*	5250	5010*	3550				3550*	3000	6898

LIFT CAPACITIES – Dipper Length: 2.70m, 5.35m T.A.B., Trackshoes: 700mm, No bucket.
JS180 LC T.A.B.

Reach	3m (9ft 10in)		4.5m (14ft 9in)		6m (19ft 8in)		7.5m (24ft 7in)		Capacity at Max Reach			
Load Point Ht.	kg	kg	kg	kg	kg	kg	kg	kg	kg	kg	mm	
9.0m (29.5ft)	5400*	5400*								4200*	4220*	3157
7.5m (24.7ft)			4780*	4780*						2980*	2980*	5682
6.0m (19.8ft)			4660*	4660*	4600*	4110				2590*	2590*	6889
4.5m (14.9ft)	5420*	5240*	5540*	5540*	5340*	4010	3190*	2790		2440*	2440*	7616
3.0m (9.10ft)			8040*	5840	6040	3840	2480	2740		2410*	2410*	7997
1.5m (4.11ft)			8620*	5450	5840	3660	4200	2670		2480*	2390	8083
0m			8360*	5240	5700	3540	4140	2620		2670*	2460	7883
- 1.5m (- 4.11ft)	7520*	7520*	7230*	5190	5390*	3500				3050*	2700	7373
- 3.0m (- 9.10ft)			5150*	5150*	3530*	3530*				3190*	3190*	6210

LIFT CAPACITIES – Dipper Length: 3.05m, 5.35m T.A.B., Trackshoes: 700mm, No bucket.
JS180 LC T.A.B.

Reach	3m (9ft 10in)		4.5m (14ft 9in)		6m (19ft 8in)		7.5m (24ft 7in)		Capacity at Max Reach			
Load Point Ht.	kg	kg	kg	kg	kg	kg	kg	kg	kg	kg	mm	
9.0m (29.5ft)	5080*	5080*								3510*	3510*	4324
7.5m (24.7ft)			4180*	4180*	3440*	3440*				2600*	2600*	6208
6.0m (19.8ft)			3830*	3830*	4120*	4120				2260*	2260*	7327
4.5m (14.9ft)	3440*	3440*	4260*	4260*	4520*	4000	3820*	2780		2110*	2110*	8014
3.0m (9.10ft)			7710*	5850	5900*	3810	4240	2700		2070*	2070*	8377
1.5m (4.11ft)			8430*	5410	5790	3610	4150	2610		2110*	2110*	8459
0m			8370*	5150	5620	3460	4070	2540		2240*	2230	8268
- 1.5m (- 4.11ft)	6580*	6580*	7440*	5070	5530*	3400	3810*	2510		2490*	2440	7784
- 3.0m (- 9.10ft)	6990*	6990*	5610*	5130	4030*	3440				2780*	2780*	6815



Lift capacity front and rear.



Lift capacity full circle.

Notes:

- The above loads are in compliance with SAE and ISO Hydraulic Excavator Lift Capacity Standards.
- They do not exceed 87% of hydraulic lifting capacity or 75% of tipping load.
- Rated loads marked with an asterisk(*) are limited by hydraulic capacity rather than tipping load.
- Lift capacities above are calculated with articulated boom at full reach.

LIFT CAPACITIES – Dipper Length: 2.25m, 5.35m T.A.B., Trackshoes: 500mm, No bucket.
JS180 NLC T.A.B.

Reach	3m (9ft 10in)		4.5m (14ft 9in)		6m (19ft 8in)		7.5m (24ft 7in)		Capacity at Max Reach		
Load Point Ht.	kg	kg	kg	kg	kg	kg	kg	kg	kg	kg	mm
9.0m (29.5ft)									7030*	7030*	2326
7.5m (24.7ft)	5900*	5900*	5800*	5680					4130*	4130*	5047
6.0m (19.8ft)	5030*	5030*	5830*	5680	5250*	3560			3490*	3180	6377
4.5m (14.9ft)	8900*	8900*	7240*	5420	5930	3500			3250*	2610	7157
3.0m (9.10ft)			8340*	5030	5760	3340	3920*	2390	3200*	2350	7562
1.5m (4.11ft)			8680	4700	5580	3190	4030	2340	3280*	2270	7653
0m			8130*	4550	5470	3100			3540*	2340	7441
- 1.5m (- 4.11ft)	7710*	7710*	6730*	4540	5010*	3090			3550*	2610	6898

LIFT CAPACITIES – Dipper Length: 2.70m, 5.35m T.A.B., Trackshoes: 500mm, No bucket.
JS180 NLC T.A.B.

Reach	3m (9ft 10in)		4.5m (14ft 9in)		6m (19ft 8in)		7.5m (24ft 7in)		Capacity at Max Reach		
Load Point Ht.	kg	kg	kg	kg	kg	kg	kg	kg	kg	kg	mm
9.0m (29.5ft)	5400*	5400*							4220*	4220*	3157
7.5m (24.7ft)			4780*	4780*					2980*	2980*	5682
6.0m (19.8ft)			4660*	4660*	4600*	3630			2590*	2590*	6889
4.5m (14.9ft)	5420*	5240*	5540*	5520	5340*	3540	3190*	2450	2440*	2370	7616
3.0m (9.10ft)			8040*	5110	5790	3370	4100	2400	2410*	2160	7997
1.5m (4.11ft)			8620*	4740	5590	3200	4020	2330	2480*	2080	8083
0m			8630*	4530	5460	3080	3960	2280	2670*	2140	7883
- 1.5m (- 4.11ft)	7520*	7520*	7230*	4490	5390*	3040			3050*	5350	7373
- 3.0m (- 9.10ft)			5150*	4570	3530*	3110			3190*	2980	6210

LIFT CAPACITIES – Dipper Length: 3.05m, 5.35m T.A.B., Trackshoes: 500mm, No bucket.
JS180 NLC T.A.B.

Reach	3m (9ft 10in)		4.5m (14ft 9in)		6m (19ft 8in)		7.5m (24ft 7in)		Capacity at Max Reach		
Load Point Ht.	kg	kg	kg	kg	kg	kg	kg	kg	kg	kg	mm
9.0m (29.5ft)	5080*	5080*							3510*	3510*	4324
7.5m (24.7ft)			4180*	4180*	3440*	3440*			2600*	2600*	6208
6.0m (19.8ft)			3830*	3830*	4120*	3640			2260*	2260*	7327
4.5m (14.9ft)	3440*	3440*	4260*	4260*	4520*	3530	3820*	2430	2110*	2110*	8014
3.0m (9.10ft)			7710*	5120	5770	3340	4060	2360	2070*	1950	8377
1.5m (4.11ft)			8430*	4700	5550	3140	3960	2270	2110*	1880	8459
0m			8370*	4440	5380	3000	3890	2220	2240*	1930	8268
- 1.5m (- 4.11ft)	6580*	6580*	7440*	4360	5310	2940	3810*	2190	2490*	2110	7784
- 3.0m (- 9.10ft)	6990*	6990*	5610*	4420	4030*	2980			2780*	2560	6815



Lift capacity front and rear.



Lift capacity full circle.

Notes:

- The above loads are in compliance with SAE and ISO Hydraulic Excavator Lift Capacity Standards.
- They do not exceed 87% of hydraulic lifting capacity or 75% of tipping load.
- Rated loads marked with an asterisk(*) are limited by hydraulic capacity rather than tipping load.
- Lift capacities above are calculated with articulated boom at full reach.

A GLOBAL COMMITMENT TO QUALITY

JCB's total commitment to its products and customers has helped it grow from a one-man business into Britain's largest privately owned manufacturer of backhoe loaders, crawler excavators, wheeled excavators, telescopic handlers, wheeled loaders, dump trucks, rough terrain fork lifts, industrial fork lifts, mini/midi excavators, skid steer loaders and tractors.

By making constant and massive investments in the latest production technology, the JCB factories have become some of the most advanced in Europe.

By leading the field in innovative research and design, extensive testing and stringent quality control, JCB machines have become renowned all over the world for performance, value and reliability.

And with a global sales and service network of over 400 distributors and agents, the company exports over 70% of its production to all five continents.

Through setting the standards by which others are judged, JCB has become one of Britain's most impressive success stories.



JCB Sales Limited, Rokester, Staffordshire ST14 5JP. Tel: 01889 590312. Fax: 01889 590588. Web: <http://www.jcb.com>

JCB reserves the right to change specifications without notice. Illustrations shown may include optional equipment and accessories. The JCB logo is a registered trademark of J C Bamford Excavators Ltd.

