

NEW
Enhanced Systems
and Features

PRELIMINARY

720HP | 12.0 – 13.5 y³ BUCKET CAPACITY

135ZV-2



 **Kawasaki**

POWER & PERFORMANCE

- NEW** Cummins QST30 Tier I Emissions Certified Engine, 760 Gross HP/720 Net HP
 - 3-mode switch (Normal, Heavy Duty, Load & Carry)
- NEW** Adjustable Declutch
- NEW** Efficient, versatile and productive
- Enhanced** LED Taillights

ECONOMIC AND EFFICIENT SYSTEMS

- NEW** ELS (Efficient Loading System)
 - Increases rimpull power when digging while demanding less fuel. Increases productivity, and fuel efficiency.
 - Switch located on instrument control panel allows operator to activate from cab.

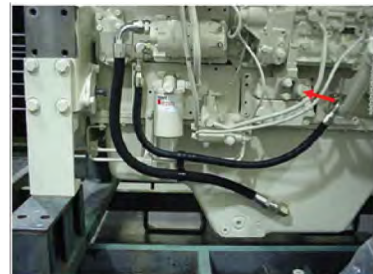
COMFORT

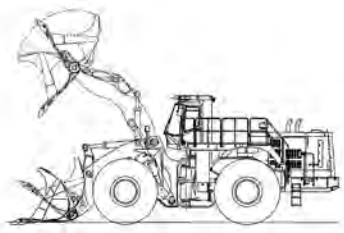
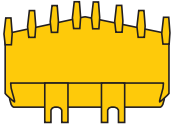
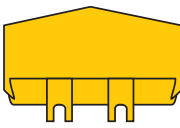
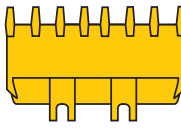
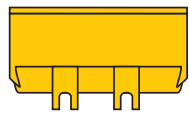
- Enhanced** Brake and throttle pedals are re-positioned for increased leg room
- Enhanced** Dual boom kickout controls allow the operator to control raising and lowering of the boom. The operator can adjust the kickout position from the cab. Boom soft-landing feature is selectable via an OFF/ON switch.
- Enhanced** **Lock Up Clutch**
Located in the torque converter, the standard lock up clutch reduces cycle times, increases fuel efficiency and increases production efficiency in load & carry applications and hill climbing. Smoother shifting, this operation engages automatically.



SERVICEABILITY

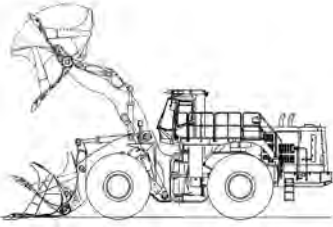
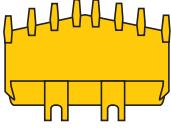
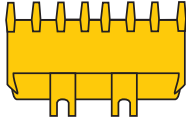
- NEW** MODM (Machine Operations/Diagnostics Module) provides essential operations and diagnostic information in an easy to read LCD display.
 - Operations
 - Monitors fluids and filters
 - Diagnostics
 - Monitors engine codes, transmission codes, alarm signals
- Enhanced** Sealed universal joints only require greasing at 2,000 hour intervals extending the life expectancy of the drive shaft
- NEW** Engine PreLub Starter has been replaced with a stand alone pump for simplified maintenance of the starter.



			Standard Boom			
			Rock-V-Edge		Rock-Straight-Edge	General Purpose
			With Teeth & Segments	Without Teeth	With Teeth & Segments	With Bolt-on Cutting Edge
						
Capacity	Heaped	yd ³ (m ³)	12.8 (9.7)	12.4 (9.5)	12.8 (9.7)	13.5 (10.3)
	Struck	yd ³ (m ³)	11.1 (8.5)	10.8 (8.25)	10.9 (8.3)	11.5 (8.8)
Maximum dumping clearance		ft-in (mm)	13 ³ / ₄ " (3,980)	14 ² / ₇ " (4,340)	13 ¹ / ₂ " (4,230)	14 ⁸ / ₈ " (4,480)
Dumping reach (to front of bucket edge or tooth)		ft-in (mm)	7 ⁵ / ₈ " (2,265)	6 ⁷ / ₈ " (2,010)	6 ⁶ / ₈ " (1,990)	5 ¹¹ / ₈ " (1,825)
Bucket hinge pin height		ft-in (mm)	19 ⁹ / ₈ " (6,040)	19 ⁹ / ₈ " (6,040)	19 ⁹ / ₈ " (6,040)	19 ⁹ / ₈ " (6,040)
Digging depth		ft-in (mm)	6 ¹ / ₄ " (160)	3" (75)	6 ⁷ / ₈ " (175)	5" (125)
Breakout force		lb (kg)	130,785 (59,323)	130,785 (59,323)	160,890 (72,980)	148,670 (67,435)
Bucket tilt-back angle	at ground level		41.0°	41.0°	41.0°	41.0°
	at carry position		49.2°	49.2°	49.2°	49.2°
Overall	Length	ft-in (mm)	42 ⁷ / ₄ " (13,000)	41 ² / ₇ " (12,570)	41 ⁵ / ₈ " (12,640)	40 ⁶ / ₈ " (12,360)
	Height	ft-in (mm)	16 ² / ₄ " (4,945)	16 ² / ₄ " (4,945)	16 ² / ₄ " (4,945)	16 ² / ₄ " (4,945)
	Width (outside tire)	ft-in (mm)	13 ⁷ / ₁₆ " (4,160)	13 ⁷ / ₁₆ " (4,160)	13 ⁷ / ₁₆ " (4,160)	13 ⁷ / ₁₆ " (4,160)
	Width (outside bucket)	ft-in (mm)	14'10" (4,520)	14'10" (4,520)	14'10" (4,520)	14'10" (4,520)
Wheel base		ft-in (mm)	15'9" (4,800)	15'9" (4,800)	15'9" (4,800)	15'9" (4,800)
Minimum turning radius	at outside bucket	ft-in (mm)	31 ¹ / ₂ " (9,740)	31 ⁷ / ₁₆ " (9,640)	32 ¹ / ₄ " (9,760)	31 ¹ / ₄ " (9,710)
	at center of outside tire	ft-in (mm)	26 ⁷ / ₁₆ " (8,120)	26 ⁷ / ₁₆ " (8,120)	26 ⁷ / ₁₆ " (8,120)	26 ⁷ / ₁₆ " (8,120)
Minimum ground clearance		ft-in (mm)	1 ¹ / ₄ " (590)	1 ¹ / ₄ " (590)	1 ¹ / ₄ " (590)	1 ¹ / ₄ " (590)
Full articulation angle		degree	40°	40°	40°	40°
Operating weight (with ROPS Canopy and Cabin)		lb (kg)	181,880 (82,500)	180,760 (81,990)	178,930 (81,160)	178,020 (80,750)
Static Tipping Load (with ROPS Canopy and Cabin)	Straight	lb (kg)	106,050 (48,105)	107,090 (48,575)	110,870 (50,290)	111,470 (50,560)
	Full turn	lb (kg)	93,330 (42,335)	94,260 (42,755)	97,580 (44,260)	98,090 (44,495)

Specifications based on counterweight, open ROPS and enclosed cab, 45/65-39 L5 tires, full fuel tank, and operator.

Materials and specifications are subject to change without notice and without obligation on the part of the manufacturer. The specifications supplied, while believed to be completely reliable, are not to be taken as warranty for which we assume legal responsibility.

			High Lift Boom	
			Rock-V-Edge	Rock-Straight-Edge
			With Teeth	With Teeth
				
Capacity	Heaped	yd ³ (m ³)	11.5 (8.6)	11.5 (8.6)
	Struck	yd ³ (m ³)	10.2 (7.6)	10.2 (7.6)
Maximum dumping clearance		ft-in (mm)	15'5 ¹ / ₈ " (4,700)	17' (4,900)
Dumping reach (to front of bucket edge or tooth)		ft-in (mm)	7'1 ¹ / ₁₆ " (2,150)	6'4 ¹³ / ₁₆ " (1,950)
Bucket hinge pin height		ft-in (mm)	21'8 ⁵ / ₁₆ " (6,610)	21'8 ⁵ / ₁₆ " (6,610)
Digging depth		ft-in (mm)	6'1/2" (165)	6'1/2" (165)
Breakout force		lb (kg)	145,725 (66,100)	171,740 (77,900)
Bucket tilt-back angle	at ground level		42°	42°
	at carry position		49°	49°
Overall	Length	ft-in (mm)	44'3 ⁷ / ₈ " (13,510)	43'4 ¹ / ₂ " (13,220)
	Height	ft-in (mm)	16'2 ³ / ₄ " (4,945)	16'2 ³ / ₄ " (4,945)
	Width (outside tire)	ft-in (mm)	13'7 ¹³ / ₁₆ " (4,160)	13'7 ¹³ / ₁₆ " (4,160)
	Width (outside bucket)	ft-in (mm)	14'10" (4,520)	14'10" (4,520)
Wheel base		ft-in (mm)	15'9" (4,800)	15'9" (4,800)
Minimum turning radius	at outside bucket	ft-in (mm)	32'8 ¹ / ₄ " (9,960)	32'8 ¹ / ₄ " (9,960)
	at center of outside tire	ft-in (mm)	26'7 ¹³ / ₁₆ " (8,120)	26'7 ¹³ / ₁₆ " (8,120)
Minimum ground clearance		ft-in (mm)	1'11 ¹ / ₄ " (590)	1'11 ¹ / ₄ " (590)
Full articulation angle		degree	40°	40°
Operating weight (with ROPS Canopy and Cabin)		lb (kg)	180,290 (81,780)	179,610 (81,470)
Static Tipping Load (with ROPS Canopy and Cabin)	Straight	lb (kg)	106,350 (48,240)	107,475 (48,750)
	Full turn	lb (kg)	92,530 (41,970)	93,520 (42,240)

Specifications based on highlift counterweight, open ROPS and enclosed cab, 45/65-39 L5 tires, full fuel tank, and operator.

Materials and specifications are subject to change without notice and without obligation on the part of the manufacturer. The specifications supplied, while believed to be completely reliable, are not to be taken as warranty for which we assume legal responsibility.

STANDARD EQUIPMENT

<p>Air Cleaner</p> <p>Air Conditioner (R134 Refrigerant)</p> <p>Alarms (Audible):</p> <ul style="list-style-type: none"> Auto Brake Brake Pressure Brake Oil Temp. Engine Oil Pressure Parking Brake with T/M Engaged. <p>Alarms (Visual):</p> <ul style="list-style-type: none"> Air Filter Battery Discharge Brake Pressure Brake Disc Wear Brake Oil Temp. Central Warning Lamp Engine Coolant Temperature Engine Oil Pressure Engine Warning (3 Levels) Torque Converter Oil Temperature Transmission Control Warning Transmission Oil Filter <p>Alternator (75 amp)</p> <p>AM/FM CD Radio with AUX Input</p> <p>Auto Brake</p> <p>Batteries: 12V-900CCA (4 units)</p>	<p>Boom Kickout (2-Position, Adjustable, In Cab)</p> <p>Boom, Soft-Landing</p> <p>Brake Line Protection</p> <p>Brake (Parking)</p> <ul style="list-style-type: none"> Spring applied; Oil pressure released, Enclosed Wet Disc Type <p>Brakes (Service), Enclosed Wet Disc, Dual System</p> <p>Bucket Control Lever (Single, Pilot Assisted)</p> <p>Bucket Leveler</p> <p>Coat Hook</p> <p>Cold Start Aid (Air Heater)</p> <p>Converter, 12V/15Amp dash outlet</p> <p>Counterweight</p> <p>Cup Holder</p> <p>Downshift Button</p> <p>Drawbar</p> <p>Engine Stop Switch</p> <p>ELS (Efficient Loading System)</p> <p>Fan (Blower)</p> <p>Fenders, Front</p> <p>Gauges:</p> <ul style="list-style-type: none"> Converter Oil Temperature Engine Coolant Temperature Fuel Level 	<p>Hour Meter</p> <p>Hydraulic Oil Level Sight</p> <p>Tachometer</p> <p>Heater/Pressurizer</p> <p>Horn (Electric)</p> <p>Hydraulic PowerBoost™</p> <p>Indicators:</p> <ul style="list-style-type: none"> Autobrake Engine Pre-heater High Beam K-Lever Parking Brake Transmission Declutch Transmission Shift Monitor Working Light <p>K-Lever Steering</p> <p>Linkage (Dual Z-type, Sealed)</p> <p>Lights:</p> <ul style="list-style-type: none"> 2 Headlights (Hi/Lo/Halogen) 4 Forward Working Lights 4 Rear Working Lights 2 Stop/Tail/Backup (LED) 2 Step Lights <p>Lock-up Torque Converter</p> <p>MODM (Machine Operation Diagnostic Module)</p> <p>Muffler (2)</p> <p>Neutral Safety Start</p> <p>Operator's Manual Box</p>	<p>Operating Mode Selection (Normal, Heavy Duty, Load & Carry)</p> <p>PreLub® System</p> <p>Radiator: Heavy Duty Plate Fin Type</p> <p>Radiator Grille, Steel</p> <p>Rear Under-Frame Cover</p> <p>Reverse Alarm</p> <p>ROPS Canopy and Enclosed Cab: Enclosed cab with sound suppression, front and rear wipers and washers, two rear view and two side mirrors, tinted glass and roll-up side windows</p> <p>Safety Articulation</p> <p>Locking Bar</p> <p>Seat, Air Ride</p> <p>Seat Belt, Retractable, 3" wide</p> <p>Shift Control Unit for Automatic Shift</p> <p>Traction Control</p> <p>Transmission Lock-Up</p> <p>Transmission Declutch Select/Adjustment Switch</p> <p>Wrist Rest, Adjustable</p>
---	--	--	--

OPTIONAL EQUIPMENT

<p>Autolube</p> <p>Bucket Teeth</p> <p>Emergency Steering</p>	<p>Ground-Level Fueling System</p> <p>HID Lighting</p> <p>High Lift Arms</p>	<p>Belly Guard, Hinged, Transmission</p> <p>K-LINK</p> <p>Quick-change Oil System</p>	<p>Ride Control</p> <p>Snap-On Cutting Edge Shrouds</p> <p>Wing Shrouds</p>
---	--	---	---

KAWASAKI KEEPS IT SIMPLE

Since 1962, Kawasaki has been listening to and learning from customers and dealers in the field. As a result, Kawasaki wheel loaders continue to evolve, with a constant focus on one thing — producing the most durable, most efficient, most dependable machines possible.

EASY TO OPERATE.

In a world of increasing demands, tighter deadlines, shrinking budgets and complicated contracts, better efficiency and greater productivity are a must. Innovative high-tech features on all Kawasaki wheel loaders allow the operator to adapt to the environment and the application right from the cab.

EASY TO MAINTAIN.

Diagnostic and operational modules monitor fluids and filters, and constantly provide information on everything from engine and transmission codes to location, hours, alarm sensors and machine performance data.

EASY TO DO BUSINESS WITH.

No run-arounds. No layers and layers of management. No distractions from competing product lines. Wheel loaders are our only business. Got a question? We'll get you an answer. Need a part? It's on its way. Quickly. Kawasaki offers flexible warranty programs, a state-of-the-art parts distribution system, an in-house rebuild center, and an experienced, knowledgeable support staff, focused on serving you.

The independent dealers that represent and support Kawasaki loaders are experts in their markets and are dedicated to providing you with the best service available.

Together, we are committed to making your investment in a Kawasaki loader a sound business decision that will pay dividends for years to come.

KAWASAKI. ONE FOCUS. COMPLETE SOLUTIONS.

