



**50ZV**

 **Kawasaki**



# 502<sup>V</sup>

# VERSATILITY

## A COMPLETE SOLUTION

- Emissions-compliant, fuel-efficient 96 HP Cummins B4.5T diesel
- 1.8 cu. yard to 2.2 cu. yard buckets available
- Accepts a wide assortment of attachments to handle many jobs
- Ride Control option provides stable load handling
- Single, pilot-assisted hydraulic control, standard, improves cycle times and ease of operation
- Automatic powershift transmission with three forward and reverse speeds
- Inboard-mounted, four-wheel, dual circuit sealed wet disc brakes for reliability and long service life
- Torque-proportioning differentials for improved traction and longer tire life
- Easy access to drains, filters and fittings
- Hydraulic Oil Cooler, standard, improves hydraulic reliability
- Lift arms are 60% stronger

## THE POWER TO PERFORM!

The **502<sup>V</sup>** loader is a versatile, high productivity wheel loader for a wide range of applications from agriculture and utility construction and concrete plants to road construction. Featuring a Cummins B4.5T diesel engine producing 96 flywheel horsepower, a 1.8 cu. yd. bucket with bolt-on cutting edge, a certified ROPS cab and a host of other features that provide high operating efficiency, ease of maintenance and safety, the **502<sup>V</sup>** is always ready for the heavy duty jobs.

## OPERATOR PRODUCTIVITY AND SAFETY

The **502<sup>V</sup>** features a completely redesigned ROPS cab with an operator's compartment that offers unmatched comfort and is designed to maximize efficiency and productivity. The cab is accessible by ladders on both sides, features automatic transmission, front and rear wipers and includes many other features which contribute to improved safety, visibility and comfort. The **502<sup>V</sup>** comes standard with a heater, AM/FM cassette player and can even be ordered with an optional 27,000 BTU air conditioner.





***Kawasaki and their dealer organization offer comprehensive support and service programs designed to keep you on the job.***

## **PUTTING THE 50<sup>2V</sup> TO WORK**

Like all Kawasaki loaders, the **50<sup>2V</sup>** has a 45+ year heritage of strength and reliability. Single lever hydraulic control with a dual lever option and single twist-grip automatic transmission control offer ease of operation.

The **50<sup>2V</sup>** is available with a 1.8 cu yd bucket with bolt-on cutting edge. A third spool valve, control lever, linkage and line are available to handle a number of attachments and extend the **50<sup>2V</sup>**'s versatility. A full range of buckets, Quick Couplers and attachments are also available.

The inboard-mounted, four-wheel sealed wet disc brakes are designed for long life and high capacity. Standard spin-on filters, remote mounted grease fittings and oil drain simplify maintenance. The standard 15.5-25-12PR (L-2) tires and optional 17.5-25-12PR (L-2) and 15.5-25-12PR (L-3) tires are available in 1-piece or 3-piece rims.

## **UNMATCHED SUPPORT**

Kawasaki maintains a large inventory of new components to ensure outstanding parts availability and minimal downtime. In addition, a predictive oil analysis program helps eliminate unnecessary maintenance and helps find problems before they occur. Kawasaki also stocks an array of cost-effective rebuilt components.

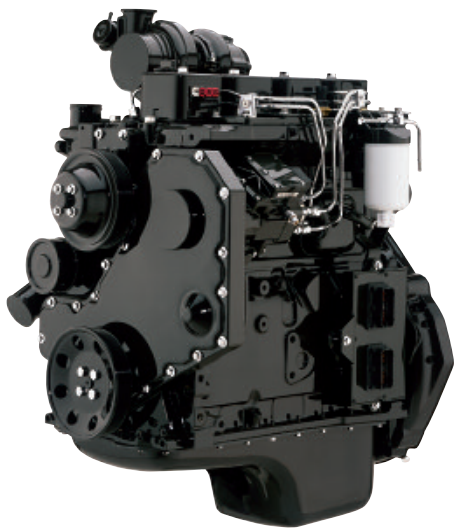


## **BUILT TO STAY ON THE JOB**

Kawasaki loaders are designed with the durability to provide years of service. Backed by a dealer network of heavy equipment experts and a dedicated support staff in the Kawasaki parts and service organization, your investment in a Kawasaki loader is an excellent choice that will pay dividends for years to come.



# POWER AND PERFORMANCE PROVIDE UNMATCHED PRODUCTIVITY



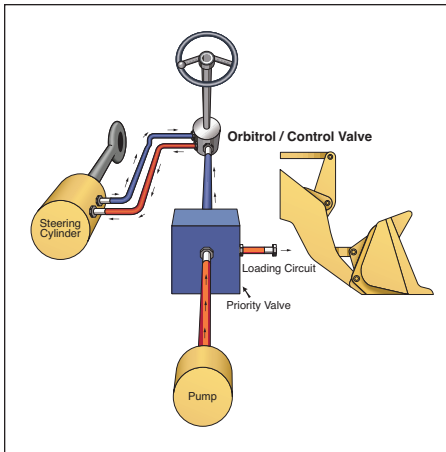
The Kawasaki **502<sup>V</sup>** means business. It incorporates the best in design and technology, giving your operators the tool they need to get the job done.

Because Kawasaki specializes in the design and manufacture of articulated wheel loaders, you get a machine with a 40-year heritage of successful innovations. The power and productivity that the **502<sup>V</sup>** brings to the job is a result of that experience.

## WORLD-CLASS ENGINES

- 96 HP fuel efficient, emissions-compliant Cummins B4.5T diesel
- Complies with tough Tier 2 emissions standards
- Engineered for longer service life
- Extensive distribution system
- Turbocharger with aftercooler





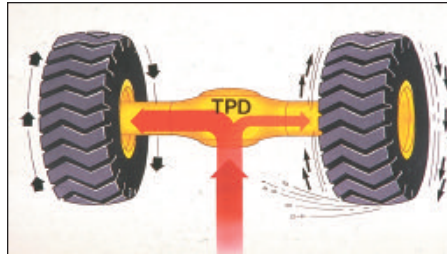
## HIGH EFFICIENCY HYDRAULIC SYSTEM

- Dry, reliable
- Cast iron gear pumps
- Energy efficient, steering circuit supplements main
- Easy access to two-spool control valve
- Large oil reservoir keeps oil cooler



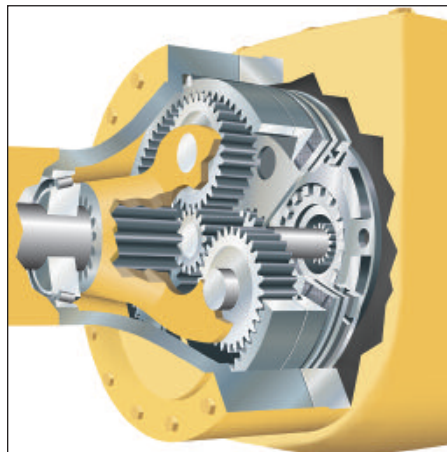
## TRANSMISSION

- Automatic three-speed transmission with powershift
- Single lever control
- Switch activates transmission declutch on right and left brake pedals
- Downshift button speeds cycle time and reduces operator fatigue



## AXLES/BRAKES

- Heavy-duty torque proportioning differential
- 15.5-25-12PR (L-2) tires standard
- 17.5-25-12PR (L-2), (L-3) and Radial tires available
- Inboard-mounted, four-wheel, dual-circuit wet disc brakes
- Easy maintenance
- 3-Piece tire rims available



## LIFT ARMS/BUCKETS

- Z-linkage
- High breakout force
- Optional high lift arms available
- Easy loading
- Excellent load retention
- Full assortment of edges and teeth available
- Complete array of attachments available
- Bucket leveler and boom kick-out standard



## STRONG, RUGGED CHANNEL FRAME

- Massive center pins and bearings
- High strength loader tower
- Heavy channel frame rear chassis

# THE COMFORT ZONE



Shown with optional dual-lever hydraulic control.



*Kawasaki has taken a from-the-ground-up approach to create a cab designed with the operator in mind. The cab focuses on providing the ultimate environment for productivity, comfort and safety. The high visibility, quiet, temperature controlled cab offers the operator ideal surroundings for putting the Kawasaki loader through its paces.*

## **50<sup>2</sup> Features**

- Sliding side windows
- Automotive door locks
- Halogen headlights improve nighttime visibility
- Reduced noise level
- Single lever hydraulics
- Single twist grip automatic transmission lever provides smooth shifting
- Telescoping and tilting steering wheel
- Flooring configuration reduces sound levels

## **Standard Features**

- 27,000 BTU Air Conditioner
- Air ride seat
- All systems monitored with lights and alarms
- One rearview and two side mirrors
- AM/FM cassette radio, standard
- Viscous isolation-mounted to reduce vibration
- Reduced sound levels
- 40,000 BTU heater, standard
- Cold start feature
- Rear light package
- Pressurized air control
- Switch activates transmission declutch on both brake pedals
- Front and rear wipers and washers
- Intermittent front wiper

## **Options**

- Dual lever hydraulic control
- Turn signal with 4-way flasher



# EASY ACCESS SIMPLIFIES SERVICING

- Engine side covers open wide for optimum access
- Filters positioned within easy reach
- Easy access to drains, filters and fittings
- Grease fittings are grouped for easy lubrication
- Ladders on both sides of the machine
- Pressurized air control reduces dust in cab
- Trunnion grease fittings located near axle
- Electric wiring color-coded and numbered for ease of service

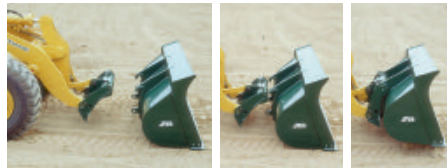


## OPTIONS

### QUICK COUPLER ATTACHMENT

The JRB Quick Coupler, can be used in conjunction with a variety of attachments, including:

- General-purpose buckets
- Side dump bucket
- Construction utility forks
- Utility pallet forks
- Extendable boom



- Paddle top clamp forks
- Grapple bucket
- Loader rake and loader rake with hydraulic clamps

### K-LINK

- On demand reports provide machine location, hours, operating status
- Alarm notification by phone or pager can indicate equipment failure, low-fuel, geo-fence break
- Worldwide satellite coverage
- Customize reports and alerts
- Internet access to all reports and alerts



*Without Ride Control*

### RIDE CONTROL

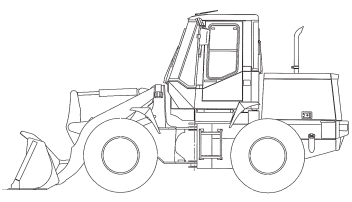
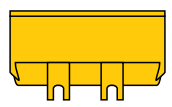
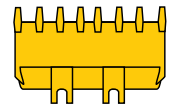
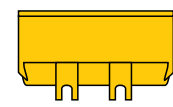
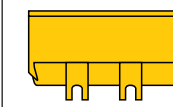
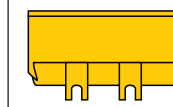
- Stable load handling
- Reduces operator fatigue
- Cuts vibration and equipment wear
- Improves safety and productivity
- Less spillage
- Faster travel speed



*With Ride Control*

*Illustration representative of similar models.*

# BUCKET DATA

			General Purpose		Material Handling	High Lift	Super High Lift
			With Bolt-on Cutting Edge	With Teeth	With Bolt-on Cutting Edge	Light Material W/Bolt-on Cutting Edge	Light Material W/Bolt-on Cutting Edge
							
Capacity	Heaped	yd <sup>3</sup> (m <sup>3</sup> )	1.8 (1.4)	1.7 (1.3)	2.2 (1.7)	1.8 (1.4)	1.8 (1.4)
	Struck	yd <sup>3</sup> (m <sup>3</sup> )	1.6 (1.2)	1.4 (1.1)	2.0 (1.5)	1.6 (1.2)	1.6 (1.2)
Maximum dumping clearance		ft-in (mm)	8'11 <sup>5</sup> / <sub>8</sub> " (2735)	8'8 <sup>3</sup> / <sub>8</sub> " (2650)	8'9 <sup>1</sup> / <sub>8</sub> " (2670)	9'11 <sup>1</sup> / <sub>2</sub> " (3035)	10'11 <sup>1</sup> / <sub>4</sub> " (3335)
Dumping reach (to front of bucket edge or tooth)		ft-in (mm)	3'1 <sup>3</sup> / <sub>4</sub> " (960)	3'4 <sup>3</sup> / <sub>8</sub> " (1025)	3'4 <sup>3</sup> / <sub>8</sub> " (1025)	3'2 <sup>1</sup> / <sub>4</sub> " (970)	3'2 <sup>3</sup> / <sub>4</sub> " (985)
Bucket hinge pin height		ft-in (mm)	11'5 <sup>3</sup> / <sub>4</sub> " (3500)	11'5 <sup>3</sup> / <sub>4</sub> " (3500)	11'5 <sup>3</sup> / <sub>4</sub> " (3500)	12'5 <sup>5</sup> / <sub>8</sub> " (3800)	13'5 <sup>5</sup> / <sub>8</sub> " (4100)
Digging depth		ft-in (mm)	1 <sup>3</sup> / <sub>4</sub> " (45)	2 <sup>3</sup> / <sub>8</sub> " (60)	1 <sup>3</sup> / <sub>4</sub> " (45)	1 <sup>3</sup> / <sub>4</sub> " (45)	1 <sup>3</sup> / <sub>4</sub> " (45)
Breakout force		lb (kg)	14,330 (6500)	15,650 (7100)	12,790 (5800)	14,330 (6500)	14,330 (6500)
Bucket tilt-back angle	at ground level		42°	42°	42°	42°	42°
	at carry position		50°	50°	50°	50°	49°
Overall	Length	ft-in (mm)	19'11 <sup>5</sup> / <sub>8</sub> " (6085)	20'3 <sup>7</sup> / <sub>8</sub> " (6195)	20'3 <sup>1</sup> / <sub>4</sub> " (6180)	20'11 <sup>3</sup> / <sub>8</sub> " (6385)	21'11 <sup>1</sup> / <sub>4</sub> " (6685)
	Height	ft-in (mm)	10'2 <sup>5</sup> / <sub>8</sub> " (3115)	10'2 <sup>5</sup> / <sub>8</sub> " (3115)	10'2 <sup>5</sup> / <sub>8</sub> " (3115)	10'2 <sup>5</sup> / <sub>8</sub> " (3115)	10'2 <sup>5</sup> / <sub>8</sub> " (3115)
Width (outside tire)		ft-in (mm)	7'5 <sup>3</sup> / <sub>8</sub> " (2270)	7'5 <sup>3</sup> / <sub>8</sub> " (2270)	7'5 <sup>3</sup> / <sub>8</sub> " (2270)	7'5 <sup>3</sup> / <sub>8</sub> " (2270)	7'5 <sup>3</sup> / <sub>8</sub> " (2270)
Width (outside bucket)		ft-in (mm)	7'8 <sup>1</sup> / <sub>2</sub> " (2350)	7'8 <sup>1</sup> / <sub>2</sub> " (2350)	8'1 <sup>2</sup> / <sub>2</sub> " (2450)	7'8 <sup>1</sup> / <sub>2</sub> " (2350)	7'8 <sup>1</sup> / <sub>2</sub> " (2350)
Wheel base		ft-in (mm)	8'6 <sup>3</sup> / <sub>8</sub> " (2600)	8'6 <sup>3</sup> / <sub>8</sub> " (2600)	8'6 <sup>3</sup> / <sub>8</sub> " (2600)	8'6 <sup>3</sup> / <sub>8</sub> " (2600)	8'6 <sup>3</sup> / <sub>8</sub> " (2600)
Minimum turning radius	at outside bucket	ft-in (mm)	17'1 <sup>1</sup> / <sub>8</sub> " (5185)	17'1 <sup>3</sup> / <sub>8</sub> " (5215)	17'2 <sup>7</sup> / <sub>8</sub> " (5255)	17'4 <sup>5</sup> / <sub>8</sub> " (5300)	17'10 <sup>3</sup> / <sub>4</sub> " (5455)
	at center of outside tire	ft-in (mm)	14'8 <sup>3</sup> / <sub>8</sub> " (4480)	14'8 <sup>3</sup> / <sub>8</sub> " (4480)	14'8 <sup>3</sup> / <sub>8</sub> " (4480)	14'8 <sup>3</sup> / <sub>8</sub> " (4480)	14'8 <sup>3</sup> / <sub>8</sub> " (4480)
Minimum ground clearance		ft-in (mm)	1'4" (405)	1'4" (405)	1'4" (405)	1'4" (405)	1'4" (405)
Full articulation angle		degree	40°	40°	40°	40°	40°
Operating weight (with ROPS Cab)		lb (kg)	17,500 (7940)	17,440 (7910)	17,610 (7990)	17,680 (8020)	17,840 (8090)
Static tipping load (with ROPS Cab)	Straight	lb (kg)	14,840 (6730)	14,880 (6750)	14,700 (6670)	13,070 (5930)	11,770 (5340)
	Full turn	lb (kg)	12,720 (5770)	12,760 (5790)	12,590 (5710)	10,960 (4970)	9660 (4380)

Measured in accordance with SAE J732C & J742 The weight and load figure include Optional Counterweight, Enclosed ROPS Cab, Air Conditioner, 17.5-25-12PR (L-2) tires, Full fuel tank, and Operator.

Materials and specifications are subject to change without notice and without obligation on the part of the manufacturer. The specifications supplied, while believed to be completely reliable, are not to be taken as warranty for which we assume legal responsibility.



## WEIGHTS AND DIMENSIONS (SUPPLEMENTAL DATA)

	Operating Weight	Tipping Load		Overall Width (Outside Tire)	Vertical Dimensions	Overall Length
		Straight	Full Turn			
ROPS Canopy (Instead of ROPS Cab)	lb (kg)	-600 (-270)	-440 (-200)	-420 (-190)	in (mm)	
Remove ROPS Cab (for transport only)	lb (kg)	-1150 (-520)	-880 (-400)	-790 (-360)	in (mm)	
Remove Optional Counterweight	lb (kg)	-570 (-260)	-1280 (-580)	-1080 (-490)	in (mm)	-2" (-50)
Tires:						
17.5 x 25-12PR (L-2)	lb (kg)	+130 (+60)	+110 (+50)	+90 (+40)	in (mm)	
15.5-25-12PR (L-2)	lb (kg)	-260 (-120)	-180 (-80)	-130 (-60)	in (mm)	-2" (-50)    -1 <sup>1</sup> / <sub>8</sub> " (-30)
15.5-25-12PR (L-3)	lb (kg)	-130 (-60)	-110 (-50)	-90 (-40)	in (mm)	-2" (-50)    -1 <sup>1</sup> / <sub>8</sub> " (-30)
17.5-25-12PR (L-3)	lb (kg)	+130 (+60)	+110 (+50)	+90 (+40)	in (mm)	
17.5 x 25-12PR (L-3) with 75% CaCl	lb (kg)	+900 (+410)	+660 (+300)	+550 (+250)	in (mm)	
Heater (in lieu of A/C)	lb (kg)	-70 (-30)	-70 (-30)	-70 (-30)	in (mm)	
Air conditioner (deduction) Removal	lb (kg)	-150 (-70)	-130 (-60)	-110 (-50)		
Belly Guard (rear frame)	lb (kg)	+90 (+40)	+70 (+30)	+70 (+30)		

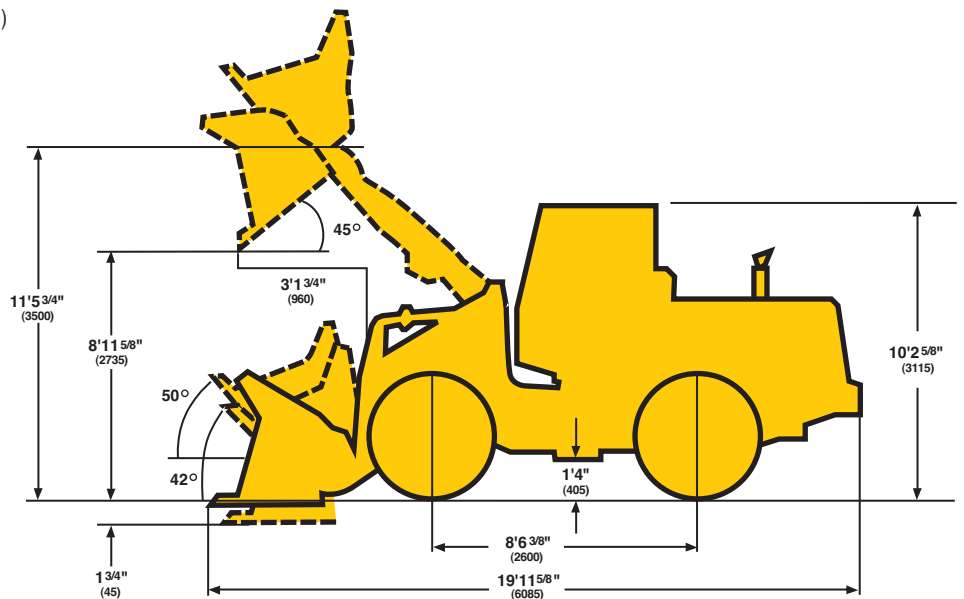
Tread .....5'11<sup>5</sup>/<sub>8</sub>" (1820mm)

Width (outside tire) .....7'5<sup>3</sup>/<sub>8</sub>" (2270mm)

Width (outside bucket) .....7'8<sup>1</sup>/<sub>2</sub>" (2350mm)

Equipped with GSC bucket 1.8 yd<sup>3</sup> with bolt on cutting edge

17.5-25-12PR (L-2) Tire and ROPS Cab



## ENGINE

Make/Model/Fuel Type	Cummins/B4.5T/Diesel
Type	4-cycle, watercooled, direct injection
Net flywheel horsepower	96HP/2100 RPM
Max torque	304 ft/lb (42 kgm)/1500 RPM
Number of cylinders	4
Bore and stroke	4.02" x 5.42" (102mm x 137.6mm)
Total displacement	274.4 in <sup>3</sup> (4497 cm <sup>3</sup> )
Alternator	DC24V – 1200w (50amp)
Starting motor	24V – 3.7kw (5HP)
Battery	Two 12V – 65AH (24V System)
Governor	All-speed, mechanical type

## TORQUE CONVERTER AND TRANSMISSION

Torque converter	3 elements, single stage
Torque stall ratio	3.27:1
Main clutches	Wet hydraulic, multi-disc type
Cooling method	Forced circulation type
Transmission	Full power shift, 3 forward, 3 reverse
Forward & reverse (maximum speed)	1st: 5.3 MPH (8.5 km/hr) 2nd: 9.9 MPH (16.0 km/hr) 3rd: 21.1 MPH (34.0 km/hr)

## SERVICE REFILL CAPACITY

LOCATION	CAPACITY:	Gallons	Liters
Engine (coolant)		10.50	(40)
Fuel tank (diesel fuel)		31.75	(120)
Engine oil (oil pan)		3.00	(11)
Front axle (gear oil)		4.75	(18)
Rear axle (gear oil)		4.75	(18)
Torque converter and transmission (engine oil)		5.25	(20)
Hydraulic system including tank (hydraulic oil)		22.50	(85)
Brake oil tank (engine oil)		0.50	(2)

## HYDRAULIC AND STEERING SYSTEM

Steering type	Articulated frame steering	
Steering mechanism	Hydraulic power steering (Orbitrol)	
Lift (boom) cylinder	Two (2) double-acting piston type: 4" x 23 <sup>3</sup> / <sub>8</sub> " (100mm x 593mm)	
Tilt (bucket) cylinder	One (1) double-acting piston type: 4" x 18 <sup>1</sup> / <sub>8</sub> " (100mm x 462mm)	
Steering cylinder	Two (2) double-acting piston type: 2 <sup>3</sup> / <sub>8</sub> " x 13 <sup>3</sup> / <sub>8</sub> " (60mm x 340mm)	
Main oil pump	Gear type: 27 GPM/1000psi @2100 RPM (102 LPM/70kg/cm <sup>2</sup> @2100 RPM)	
Pilot oil pump	Gear type: 2.1 GPM/512psi @2100 RPM (8.1 LPM/36kg/cm <sup>2</sup> @2100 RPM)	
Relief valve set pressure	Loading	3000 psi (210 kg/cm <sup>2</sup> )
	Steering	2490 psi (175 kg/cm <sup>2</sup> )
HYDRAULIC CYCLE TIME*		
Lifting time (at full load)	6.0 sec.	
Lowering time (empty)	3.0 sec.	
Bucket dumping time	1.2 sec.	
TOTAL	10.2 sec.	

\* Measured in accordance with SAE J732C

## AXLE SYSTEM

Drive system	4-wheel drive	
Front and rear axle	Semi-floating type	
Tires	Standard	15.5 x 25-12PR (L-2)
	Optional	15.5 x 25-12PR (L-3) 17.5 x 25 x 12 (L-2) (L-3)
Reduction and differential gear	Spiral bevel/gear, 1 stage reduction	
Final reduction gear	Internal planetary gear (5.44:1) inboard mounted	
Oscillation angle	±12°/ 1'2 <sup>15</sup> / <sub>16</sub> " (380mm)	

## BRAKE SYSTEM

Service brakes	4-wheel fully hydraulic type wet disc brakes with independent systems for front and rear wheels (inboard mounted)	
Parking/Emergency brake	Mechanical, located on front drive shaft.	



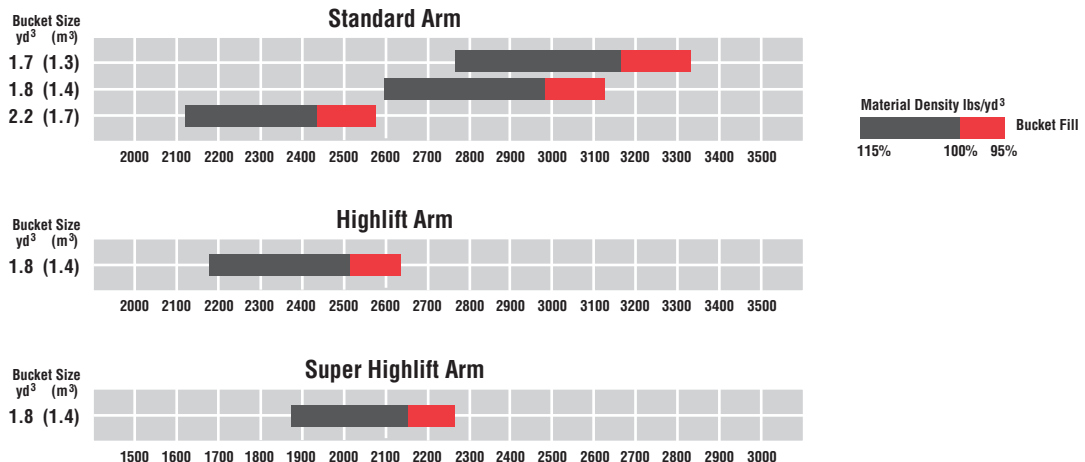
### STANDARD EQUIPMENT

<p>Air Cleaner (Double Element Donaldson)</p> <p>Air Conditioner (with heater &amp; defroster) (R134a refrigerant)</p> <p>Alarms (Audible): Brake Oil Pressure Engine Oil Pressure Parking Brake with T/M Engaged</p> <p>Alarms (Visual): Air Filter Battery Discharge Brake Oil Level Brake Oil Pressure Engine Oil Pressure Engine Coolant Temperature Converter Oil Temperature Parking Brake Transmission Control Warning</p> <p>Alternator (50 amp) AM/FM Cassette Radio</p>	<p>Batteries: 12V-65AH (2 units)</p> <p>Brake (Parking) Mechanical Drum type</p> <p>Brakes (Service) Oil Actuation Enclosed Wet Disc Dual System</p> <p>Bucket Control Lever (Single, Pilot Assisted)</p> <p>Bucket Leveler</p> <p>Boom Kickout</p> <p>Cold Start Aid</p> <p>Converter, 12V/10Amp dash outlet</p> <p>Drawbar</p> <p>Downshift Button</p> <p>Electrical System (24 volt)</p> <p>Engine Coolant Expansion Tank</p> <p>Fan (Blower)</p> <p>Fenders (Front and Rear)</p> <p>Gauges:</p>	<p>Engine Coolant Temperature</p> <p>Fuel Level</p> <p>Hour Meter</p> <p>Speedometer</p> <p>Heater/Pressurizer (40,000 BTU)</p> <p>Hoodsides (Hinged)</p> <p>Horn (Electric)</p> <p>Indicators: High Beam Parking Brake Transmission Declutch Working Light</p> <p>Linkage (Z-type, Sealed)</p> <p>Lights: 2 Headlights</p> <p>Working Lights: 2 Front 4 Rear 2 Stop/Tail 2 Backup</p> <p>Muffler</p>	<p>Neutral Safety Start</p> <p>Operator's Manual Box</p> <p>Radiator: Heavy Duty Plate Fin Type</p> <p>Radiator Grille</p> <p>Reverse Alarm</p> <p>ROPS Cab: Enclosed cab with sound suppression, front lights, front and rear wipers and washers, one rear and two side mirrors, tinted glass, and sliding side windows</p> <p>Safety Articulation Locking Bar</p> <p>Seat, Air Ride</p> <p>Seat Belt, 3" wide</p> <p>Torque Proportioning Differentials</p> <p>Transmission Declutch Selector Switch</p> <p>Vandalism Protection</p>
---	---	---	--

### OPTIONAL EQUIPMENT

<p>Belly Guard</p> <p>Bolt-on Cutting Edge</p> <p>Bucket Control Lever: Dual</p> <p>Bucket Teeth</p> <p>Counterweight, Bucket</p> <p>Cushion Dump Valve</p>	<p>Engine Precleaner</p> <p>High-Lift Arms</p> <p>Hydraulic System three (3) spool valve</p> <p>No Spin Differential</p> <p>Quick Coupler and Attachments</p>	<p>ROPS Canopy</p> <p>Ride Control</p> <p>Tires: 15.5-25-12PR (L-3), 17.5-25-12PR (L-2), (L-3)</p> <p>Tire Rims, 3-Piece</p>	<p>Turn Signal With Four-way Flasher</p> <p>Vandalism Cover For Operation Panel</p>
---	---	--	---

### BUCKET SELECTION CHARTS



# KAWASAKI LOADERS

*More Than A Machine, A Complete Solution*

KCMA Corporation, a division of KCM Corporation, is a leading supplier of a full range of high quality wheel loaders. In fact, Kawasaki is the oldest on-going manufacturer of articulated, rubber-tired wheel loaders in the world. Since 1962, Kawasaki wheel loaders have continuously evolved to bring you the best in equipment and support services, backed by a carefully selected dealer network.

Kawasaki articulated wheel loaders incorporate innovative design features coupled with extensive knowledge and experience gained from real-world applications. Kawasaki pioneered Z-Link design to provide unmatched utility, high breakout force and efficiency in its machines. Powered by proven emissions-compliant Cummins diesel engines, durability and serviceability are designed into every Kawasaki loader.

Kawasaki loaders are assembled at the company's modern facilities in Newnan, GA. Service and support operations are headquartered in Kennesaw, GA.

A state-of-the-art parts distribution system links dealers with the main parts warehouse, allowing them to order parts directly. Qualified craftsmen rebuild components for all Kawasaki models at our fully-equipped rebuild center, making component exchange easier and faster. An independent oil analysis



program allows monitoring of critical systems to reduce unscheduled downtime.

The independent dealers that represent and support Kawasaki loaders are experts in their markets and are

dedicated to providing you with the best service available. Together, we are committed to making your investment in a Kawasaki loader a sound business decision that will pay dividends for years to come.



2140 Barrett Park Drive • Suite 101  
Kennesaw, Georgia 30144  
Tel: 770-499-7000 • Fax: 770-421-6842  
[www.kawasakiloaders.com](http://www.kawasakiloaders.com)

