

# SK140SRL

## LOGGING SPECIFICATION



- Bucket Capacity:  
**0.45 m<sup>3</sup> ISO heaped**
- Engine Power:  
**74 kW/2,000 min<sup>-1</sup> (ISO14396)**
- Operating Weight:  
**15,700 kg**

## Designed with Logging Operation in Mind

The SR series, with worry-free tail swing, greatly changed the market for urban construction projects. Since then, these versatile machines have become increasingly active in forest and farm work, as well, working effectively in locations where small foot print and excellent maneuverability are essential.



## Wide Shoes Ensures Plenty of Traction

You can count on smooth and dependable travel with the longer crawler and wider shoe that are usually used on machines the next class up.



## iNdr Anti-Dust Filter System

Dust and debris get caught by the filter they can harm the engine compartment.

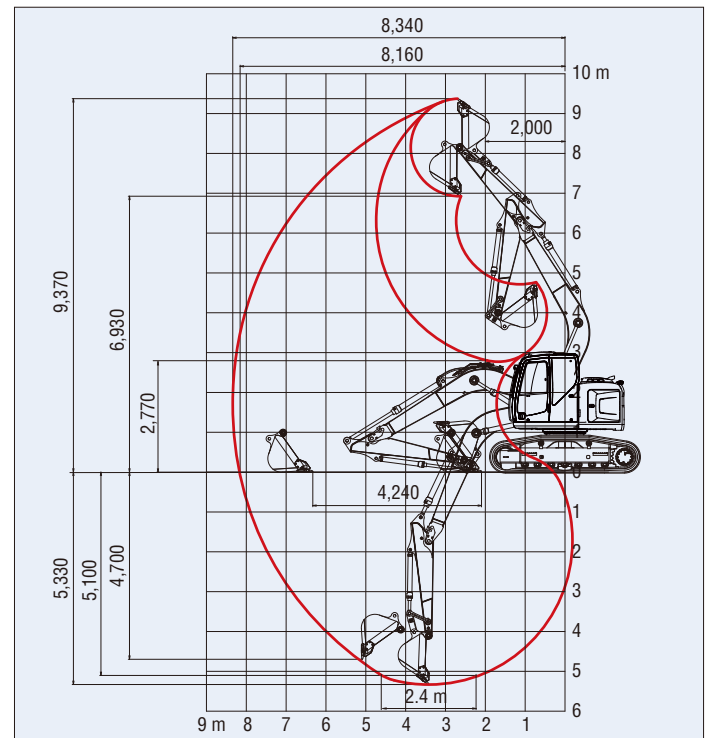


## SPECIFICATIONS

PERFORMANCE	
Model	SK140SRL
Bucket Capacity ISO heaped	m <sup>3</sup> 0.45
Travel Speed	km/h 5.3/3.0
Swing Speed	min <sup>-1</sup> 11.0
Drawbar Pulling Force	kN 154
Bucket Digging Force	kN 90.1
Arm Crowding Force	kN 64.4
WEIGHT	
Operating Weight	kg 15,700
Ground Pressure	kPa 34
ENGINE	
Make	MITSUBISHI
Model	D04EG-TAA
Type	Direct injection, water-cooled, 4-cylinder 4-cycle, diesel engine, with turbocharger, intercooler
Power Output ISO14396	kW/min <sup>-1</sup> 74/2,000
Max. Torque ISO14396	N·m/min <sup>-1</sup> 375/1,600
Displacement	L 3.331
Fuel Tank	L 200
HYDRAULIC SYSTEM	
Pumps	Two variable displacement pumps + one gear pump
Max. Flow	L/min 2 x 130, 1 x 20
Relief Valve Setting	MPa 34.3
Hydraulic Oil Tank (System)	L 85.2 (126.7)

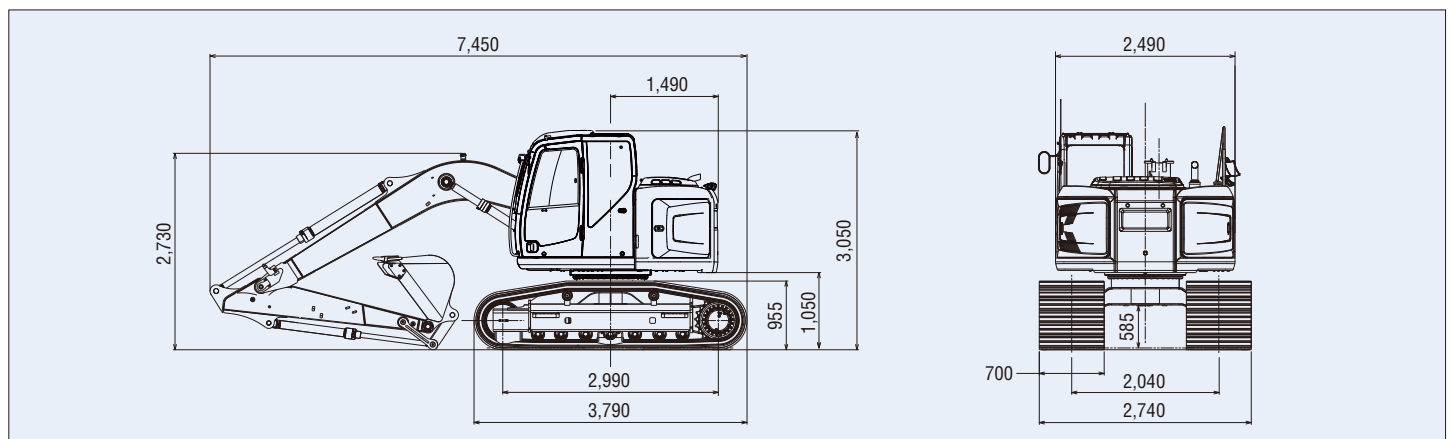
## WORKING RANGES

Unit: mm



## GENERAL DIMENSIONS

Unit: mm



Note: This catalog may contain attachments and optional equipment that are not available in your area. And it may contain photographs of machines with specifications that differ from those of machines sold in your areas. Please consult your nearest KOBELCO distributor for those items you require. Due to our policy of continuous product improvements all designs and specifications are subject to change without advance notice.

Copyright by **KOBELCO CONSTRUCTION MACHINERY CO., LTD.** No part of this catalog may reproduce in any manner without notice.

## KOBELCO CONSTRUCTION MACHINERY CO., LTD.

17-1, Higashigotanda 2-chome, Shinagawa-ku, Tokyo 141-8626 JAPAN  
Tel: +81 (0) 3-5789-2146 Fax: +81 (0) 3-5789-2135  
[www.kobelco-kenki.co.jp/english\\_index.html](http://www.kobelco-kenki.co.jp/english_index.html)

Inquiries To:

**KOBELCO** is the corporate mark used by Kobe Steel on a variety of products and in the names of a number of Kobe Steel Group companies.

SK140SRL-EU-101-130303IF