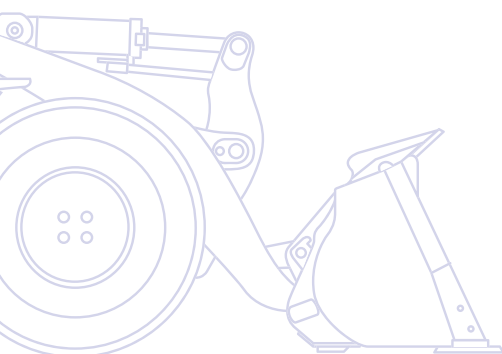


# KOMATSU

PRELIMINARY



## Wheel Loader **WA200-7**



**ENGINE POWER**  
95,2 kW / 128 HP @ 2.000 rpm

**OPERATING WEIGHT**  
ca. 11.500 kg

**BUCKET CAPACITY**  
1,9 - 2,1 m<sup>3</sup>

## High productivity & low fuel consumption

- Powerful and fuel-efficient Komatsu SAA4D107E-2 engine
- Meets EU Stage IIIB/EPA Tier 4 interim
- Komatsu CLSS hydraulic system
- New Eco-indicator helps to further reduce fuel consumption

## Versatile PZ-linkage

- Combines advantages of Z-linkage with parallel lift
- Large break-out force for easy bucket fill
- High tilt forces for controlled work with heavy attachments
- Parallel lift for fast pallet handling
- Superb visibility to front attachments



## Excellent stability and manoeuvrability

- Superior dumping height and reach
- Highly efficient hydrostatic drive line (HST)
- Boom suspension system for minimum spillage (option)



Komatsu Wireless  
Monitoring System



Complimentary maintenance  
program for customers



## First-class operator comfort

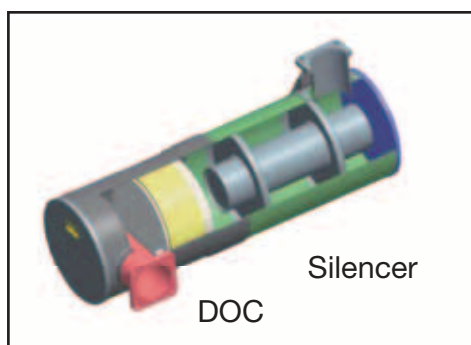
- Multi-function lever standard
- Sliding proportional control for attachments (option)
- Rear view camera system (option)
- Low noise and vibration levels



*New engine fully complies with EU Stage IIIB and EPA Tier 4 interim*



*Multi-function lever with optional sliding proportional control for attachments*



*Komatsu Diesel Oxidation Catalyst (KDOC)  
A simple and high efficiency diesel oxidation catalyst that eliminates the need for PM regeneration and simplifies the engine control system.*

## Easy maintenance

- Radiator with auto reversible fan speeds up cleaning
- Factory fitted automatic lubrication system (option)
- Large gull-wing doors for easy access to service points
- Equipment Management and Monitoring System (EMMS)
- Robust components with a long service life



*Easy maintenance access*

# Wheel Loader

## WA200-7

### ENGINE

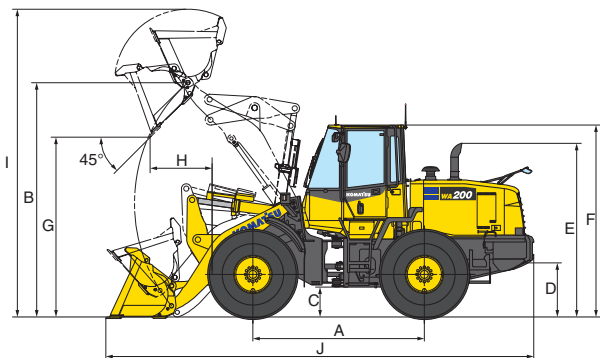
Model .....	Komatsu SAA4D107E-2 Common rail direct injection, water-cooled, emissionised, turbocharged, after-cooled diesel
Engine power	
at rated engine speed .....	2.000 rpm
ISO 14396 .....	95,2 kW / 128 HP
ISO 9249 (net engine power) .....	94,0 kW / 126 HP
No. of cylinders .....	4
Bore × stroke .....	107 × 124 mm
Displacement .....	4,46 ltr

### ENVIRONMENT

Engine emissions .....	Fully complies with EU Stage IIIB and EPA Tier 4 interim exhaust emission regulations
Noise levels	
LwA external .....	104 dB(A) (2000/14/EC Stage II)
LpA operator ear .....	72 dB(A) (ISO 6396 dynamic test)
Vibration levels (EN 12096:1997)*	
Hand/arm .....	≤ 2,5 m/s <sup>2</sup> (uncertainty K = 0,45 m/s <sup>2</sup> )
Body .....	≤ 0,5 m/s <sup>2</sup> (uncertainty K = 0,26 m/s <sup>2</sup> )

\* for the purpose of risk assessment under directive 2002/44/EC, please refer to ISO/TR 25398:2006.

### BUCKET (2,0 m<sup>3</sup> stockpile bucket, direct mount)



	Static tipping load	Straight	8.605 kg
		Full Turn (40°)	7.515 kg
	Operating weight		11.495 kg
G	Dumping clearance, maximum height and 45° dump angle*		2.965 mm
	Reach at 2.130 mm and 45° dump angle		1.580 mm
H	Reach at maximum height and 45° dump angle		950 mm
	Reach with boom/bucket level		2.315 mm
I	Operating height, fully raised		5.095 mm
J	Overall length, bucket on ground		7.090 mm
	Load clearance circle (bucket at carry, outside corner of bucket)		11.860 mm
	Breakout force		11.000 kg

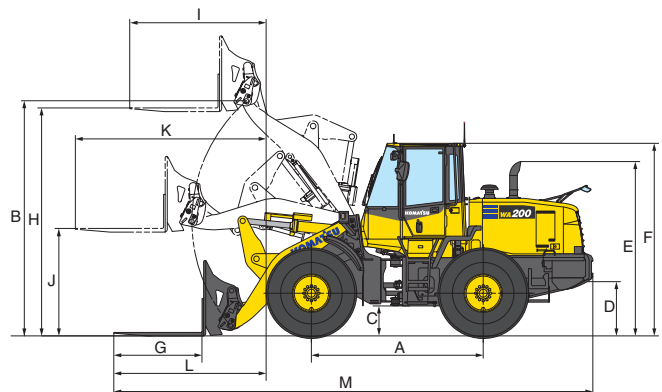
### HYDRAULIC SYSTEM

Type .....	Komatsu CLSS (Closed Centre Load Sensing System)
Hydraulic pump .....	Gear pump
Working pressure (max) .....	210 kgf/cm <sup>2</sup>
Circulating capacity of the hydraulic pump .....	85 + 54 ltr/min
No. of boom/bucket cylinders .....	2/1
Type .....	Double-action
Bore diameter × stroke	
Boom cylinder .....	125 × 674 mm
Bucket cylinder .....	150 × 504 mm
Hydraulic control lever .....	Servo-controlled, single lever

### TRANSMISSION

Drive system .....	Electronically controlled hydrostatic transmission, switchable in all directions under full power. Fixed ratio gearbox. Variable speed limiter
Hydrostatic pump .....	1 variable piston pump
Hydrostatic motor .....	2 variable piston motors
Speed ranges (forwards/backwards) .....	4/4
Max. travel speeds (forwards/backwards) (Tyres 20.5 R25)	
1. speed range .....	5,2 - 14,3 km/h
2. speed range .....	14,3 km/h
3. speed range .....	23,2 km/h
4. speed range .....	38,0 km/h

### FORK TINES



		with quick coupler	
	Static tipping load – boom level	Straight	5.905 kg
	fork level, tine center	Full turn (40°)	5.155 kg
	Operating weight		11.485 kg
G	Fork tine length		1.220 mm
H	Ground to top of tine at maximum lift		3.740 mm
I	Reach at maximum lift		2.030 mm
J	Ground to top of tine – boom and tine level		1.750 mm
K	Reach – boom and tine level		2.935 mm
L	Reach – tine level on ground		2.330 mm
M	Overall length – tine level on ground		7.735 mm
	Operating load		2.578 kg

All measurements with tyres 20.5 R25

VENSS05200P 09/2014

Komatsu Europe International NV · Mechelsesteenweg 586 · B-1800 VILVOORDE (BELGIUM)  
Tel: +32-2-255 24 11 · Fax: +32-2-252 19 81 · www.komatsueurope.com

This brochure is a preliminary version which is intended for promotional purposes only. The information contained in this brochure may be incomplete and/or subject to change. This brochure will be replaced by an updated version.