

4407

Telehandlers

5507

5509



kramerALLRAD



**The most powerful
Kramer telehandler ever.**

Payload of 4.3 tonnes to 5.5 tonnes and lift height of 7 to 9 metres.

**The new telehandler
from Kramer:** Faster,
more accurate and more
comfortable than ever.



4407 5507 5509



Fun & Function: **Improved ergonomics and effectiveness**

Work in a low emission, fuel-saving and comfortable way – thanks to the Ecospeed transmission, new useful extra functions and Smart Driving – the automatic rpm adjustment at constant speed.

Top features:

- Ecospeed transmission: Sensitive, infinitely variable driving from 0 – 40 km/h with the best values in tractive force
- Precise control of hydraulic add-on equipment – thanks to the ergonomic slider for the hand throttle and low-speed control
- Smart Driving: Lowering of the engine speed to 1,800 rpm at constant speed

Reach your goal faster: **With standard and supplementary equipment from Kramer**

Intelligently thought-out standard and supplementary functions simplify the operation of the Kramer telehandler: Through Smart Loading, add-on equipment can be accurately positioned via joystick. A unique pressure release directly next to the quick change plate makes coupling and uncoupling hydraulic add-on equipment a breeze. The individual regulation of the oil volume is customisable for every control circuit via a potentiometer and display.

Top features:

- Smart Loading: Automatic bucket retraction for a quick setpoint position of the add-on equipment
- Exterior pressure release of the third control circuit
- Oil volume adjustment: The right hydraulic performance for every control circuit



The new telehandlers from Kramer combine the best of two worlds. The robustness of a wheeled loader coupled with the lift height of a telehandler. Combined with a number of innovative assistance systems and useful supplementary equipment, your new Kramer will become the key machine in materials handling. True to the motto “time is money”, the new Kramer telehandler completes your work faster, more accurately and more comfortably than ever before. THE telehandler on the market – Kramer.



Faster, higher, further: Powerful in the tightest spaces

With their fast loading cycles, all-wheel steering, the easy filling at great heights and excellent visibility, Kramer telehandlers increase efficiency at the site of application – especially in tight working conditions.

Top features:

- Small turning radius thanks to the all-wheel steering
- Fast loading cycles with a small space requirement
- Telescopic boom for easy filling at great heights
- Excellent all-round visibility due to the intelligent cab and engine hood design

Safety in all circumstances and for every task

The second generation Smart Handling overload system means three different working modes for even more comfort and safety.

Top features:

- Bucket mode: For effective materials handling, the telescopic boom automatically retracts when lowering so that it can absorb the maximum thrusting and shearing forces in the lowered position
- Stacking mode: When lifting and lowering, the machine independently retracts and extends and the quick change plate moves up and down on a vertical line. Faster stacking, easy and safe.
- Manual mode: Stop the automatic functions in the case of an overload



When it matters...

Kramer telehandlers with wheeled loader properties.



Built for the toughest applications

Intelligent technology paired with smart design. In this way, the Kramer telehandlers show their strength, especially under harsh working conditions. Thanks to the load-sensing working hydraulics, they achieve fast work cycles. Cleverly designed access for maintenance, an infinitely variable drive system, economical fuel consumption under high torque and excellent lift capacity at up to 9 metres lift height provide outstanding daily performance.

Top features:

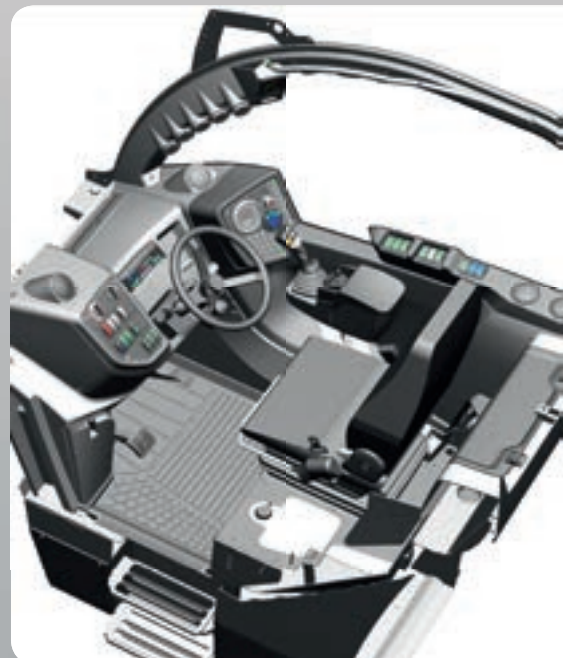
- 4.3 tonnes to 5.5 tonnes, 7 and 9 metre lift height
- Loads distributed evenly to the chassis thanks to the laterally supported stabilisers
- Economical consumption and high torque (90 – 115 kW Deutz, emissions level 3b)
- Lift, telescopic and tilting cylinder with final position dampening is kind to both machine and operator

Superb comfort and convenience at all times

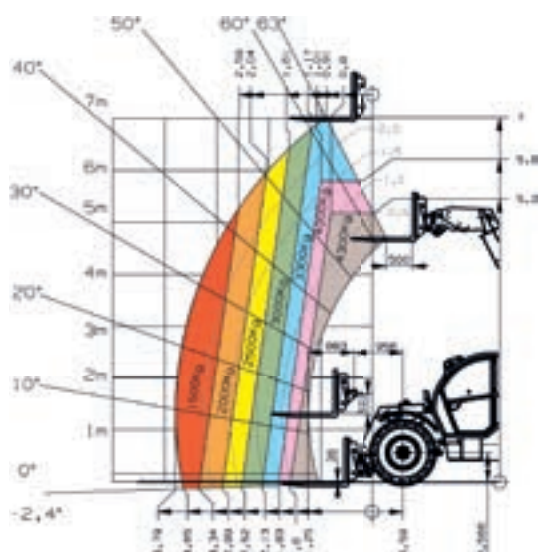
The ergonomic and functional cab design allows for precision handling in any situation. The improved joystick with 16 functions is attached directly to the seat and colour-coded switches also simplify the operation. A low noise level in the cab and suspended pedals ensure stress-free working. And the large panoramic window provides the operator with the best possible view in all directions.

Top features:

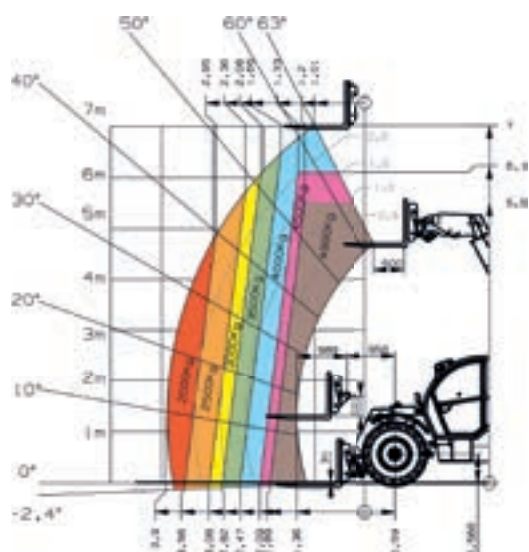
- Ergonomic joystick console attached to the seat
- Colour-coded switches according to function
- Panoramic window with 4.4 m² glass surface
- Low noise level in the cab (78 dBA at 40 km/h)



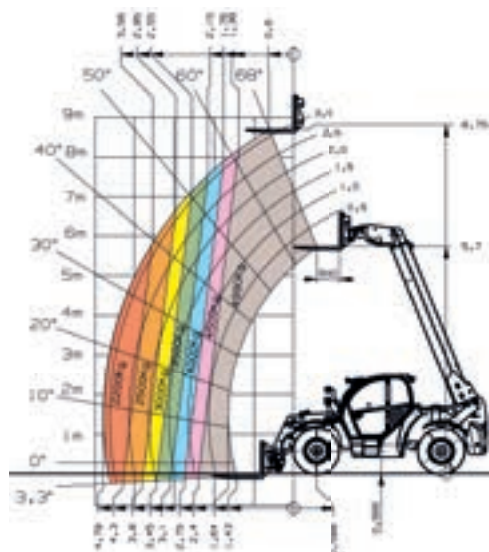
4407



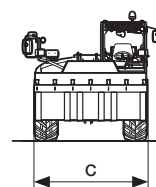
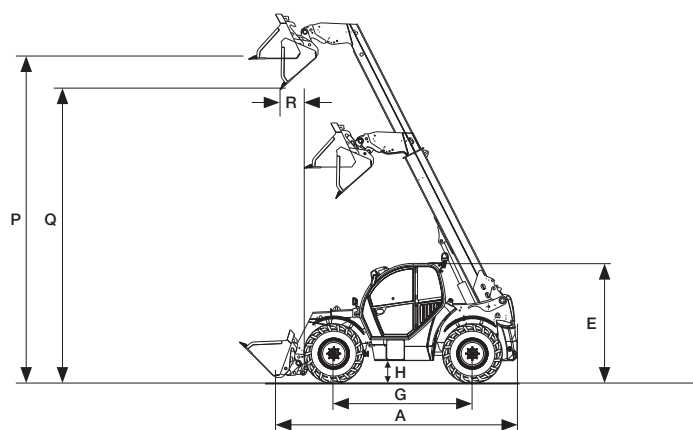
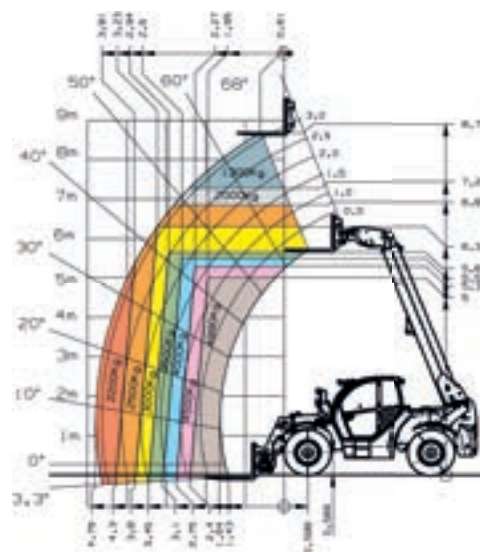
5507



5509 with hydraulic levelling and oscillating axle lock



5509 without levelling and oscillating axle lock



Technical data.

	4407	5507	5509
BMI DATA			
Max. payload (LSP 600 mm) kg	–	4,990	4,990
Max. payload (LSP 500 mm) kg	4,300	5,500	5,500
Max. stacking height mm	7,000	7,000	8,750
Weight without add-on equipment kg	7,900	9,200	10,620
ENGINE			
Make	Deutz	Deutz	Deutz
Type	TCD 3.6 L4	TCD 4.1 L4	TCD 4.1 L4
Rating kW/hp	90/122	115/156	115/156
Max. torque at 1,600 rpm Nm	480	609	609
Displacement ccm³	3,621	4,038	4,038
Exhaust after-treatment	DOC	DOC and DPF	DOC and DPF
POWER TRANSMISSION			
Drive	Ecospeed	Ecospeed Plus	Ecospeed Plus
Drive speed km/h	0–40	0–40	0–40
Axles	Carraro planetary drive axle	Carraro planetary drive axle	Carraro planetary drive axle
Oscillating angle of the rear axle °	+/-10	+/-10	+/-10
Differential lock	100 % connectable in the front axle		
Service brake	Hydraulic dual circuit power brake system (lamellas) on front and rear axle		
Parking brake	Electro-hydraulic, multi-plate spring-loaded brake in the front axle and via universal joint shaft on rear axle		
Standard tyres	460/70 R24	460/70 R24	460/70 R24
STEERING AND WORK HYDRAULICS			
Steering system functionality	Hydrostatic all-wheel steering with fully automatic steering synchronisation		
Max. steering lock °	40	40	40
Work pump	Load-sensing axial piston pump		
Flow rate l/min	140	187	187
Pressure bar	260	260	260
KINEMATICS			
Max. coverage mm	3,790	3,900	4,790
Payload at max. lift height kg	3,300	4,000	1,300 (4,990*)
Payload with max. coverage kg	1,500	2,000	2,200
Lift height at maximum load mm	5,200	5,500	5,000 (8,750*)
Coverage at maximum load mm	1,600	1,890	2,400
Total pivoting angle °	152	152	157
DIMENSIONS			
A Length mm	4,985	4,985	5,690
C Width (incl. bucket) mm	2,500	2,500	2,500
E Height mm	2,490	2,490	2,490
G Wheelbase mm	2,950	2,950	3,150
H Ground clearance mm	418	418	412
P Load-over height mm	6,835	6,835	8,498
Q Dump height mm	6,183	6,183	7,997
R Dump reach mm	495	495	63
Turning radius via tyres mm	3,755	3,755	4,350

* with hydraulic levelling and oscillating axle lock



The value wheel: The customer's success is at our centre.



We win over with the values of a medium-sized, family-owned company that is publicly traded. With the strength and expertise of a globally active organisation. With people that fulfil our motto every day with life and ideas.

We believe in quality, innovation, performance and character. And we believe in the sustainable success of our customers, whom everything ultimately is about.

Kramer-Werke GmbH
Wacker Neuson Straße 1
D-88630 Pfullendorf
Germany
Tel. 00 800 90 20 90 20
Fax +49(0)7552 92 88 - 234
info@kramer-online.com
www.kramer-online.com