



# COMPACT EXCAVATORS

**ZERO-TAIL-SWING**



**170Z ▲ 270Z ▲ 350Z NXT2 ▲ 450Z ▲ 800Z**





# IN THE BEGINNING

**What began in the 19th century as an agricultural implement manufacturer has grown into a 21st century compact equipment powerhouse – Mustang Compact Equipment.**

Known in the early years as the Owatonna Manufacturing Company, Mustang was among the first to make what is known today as the skid steer loader. Since that time, Mustang has combined old-school experience with innovative processes to offer one of the broadest lines of compact equipment available today.

**MUSTANG. THE ORIGINAL WORKHORSE.**



# CAN YOU



# DIG IT?



Groundbreaking. It's one of the many ways to describe the diverse, all-new line of Mustang zero-tail-swing compact excavators. Each model is built with the operator in mind, providing the power and comfort to exceed expectations. Mustang zero-tail-swing compact excavators are reliable, strong and maneuverable, making them the perfect partner on the most challenging job sites.

**TRUE ZERO-TAIL-SWING** ▲ Access tight spaces and maneuver effortlessly with no track overhang, courtesy of the zero-tail-swing design.

**YANMAR DIESEL ENGINES** ▲ Powerful, proven Yanmar engines, from 13.5 hp (10.1 kW) on the 170Z up to 54.6 hp (40.7 kW) on the 800Z, equip these machines with the power needed to tackle the most demanding tasks.

**POWER-A-TACH®** ▲ Connect attachments hydraulically from the operator's station (*not available on 170Z*).

**NEW! HYDRAULIC THUMB** ▲

Factory-installed hydraulic thumb option enhances productivity on the jobsite (*not available on 170Z*).



## ZERO-TAIL-SWING COMPACT EXCAVATORS



# MINI MUSCLE



## 170Z



**Small enough to get there, big enough to get it done. The Mustang 170Z zero-tail-swing compact excavator offers the power, maneuverability and versatility to complete any job at hand.**

**SETTLE IN TO COMFORT** ▲ Ergonomic controls, an adjustable high-back seat and adjustable armrests provide the comfort you need, all within a walk-through operator's station that provides excellent access from either side of the machine.

**HYDRAULIC POWER** ▲ The hydraulic system maximizes productivity by converting available engine power to hydraulic power.

**TRANSPORT WITH EASE** ▲ Machine shipping weight less than 4,000 lbs. (1814 kg) makes for easy loading and hauling.





#### ROBUST BOOM STRENGTH ▲

High-performance boom contains thick side plates and a single pin-mounted design to provide optimal precision and durability.



#### EXTENDABLE UNDERCARRIAGE ▲

Tracks hydraulically extend to 4'2" (1280 mm) to enhance stability or retract to 3'1" (950 mm) for operation in confined spaces.



#### ZERO-TAIL-SWING ▲

True zero-tail-swing design, paired with cast side protectors, offers protection when working near a variety of structures and obstacles.

## COMPACT VERSATILITY



#### PACK SOME PUNCH ▲

Built around a powerful, reliable Yanmar 13.5 hp (10.1 kW) Tier IV diesel engine, this mighty machine offers high-performance operation in a low-profile package.



#### EXTRA PROTECTION ▲

Bucket, dipper and boom cylinders are protected by plate spring cylinder guards, while the upper structure lower frame corners are reinforced by high-strength steel covers.



#### SERVICEABILITY ▲

Removable side panels, a large rear door and access panel under the operator seat provide the access needed for hassle-free serviceability and daily maintenance checks.

**170Z**



**DURABLE**

# DIGGER



## ▶ 270Z



The Mustang 2.7 metric ton 270Z zero-tail-swing compact excavator brings compact performance and durability to cramped jobsites.

**OVERACHIEVER** ▲ Equipped with a powerful Yanmar 21.6 hp (16.1 kW) Interim Tier IV diesel engine, the 270Z handles demanding work with ease.

**POWER-A-TACH®** ▲ With the flip of a switch, attachments can be changed quickly with minimal effort. The operator only leaves the seat to engage and disengage the safety pin.





**HYDRAULIC FLOW** ▲ Four hydraulic pumps provide the ample flow required for smooth operation, even while using the boom and arm simultaneously.



**TRUE ZERO-TAIL-SWING** ▲ Innovative design ensures that the upper structure never overhangs the tracks. Cast side protectors guard and prevent damage to the machine.



**OPERATOR FRIENDLY** ▲ Excellent visibility and ergonomic controls come standard, and an optional fully-enclosed cab with heat further enhance operator comfort.

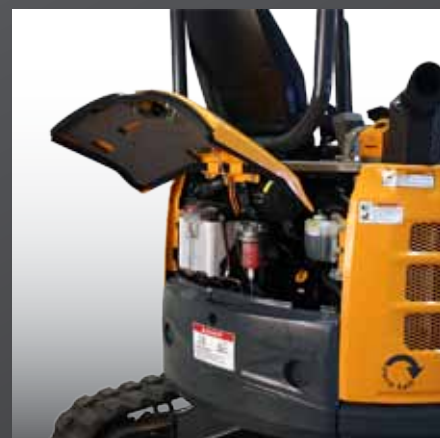
# EFFORTLESS ABILITY



**EXTRA STABILITY** ▲ Wide track gauge and offset track drive system enhance machine stability without adding to overall machine width. Angled crawler frame reduces soil buildup.



**ROBUST BOOM STRENGTH** ▲ High-performance boom and a single pin-mounted design provide optimal precision and durability. Optional factory-installed hydraulic thumb attachment adds versatility.



**EASY SERVICE ACCESS** ▲ Large, rear hood opens easily to expose the battery, engine oil, air filter and cooling system. Right-hand side cover easily removes for access to the radiator.



**POWERFUL,  
MID-SIZED**

# STEED



## ▶ 350Z NXT2



The **ALL-NEW** 350Z NXT2 zero-tail-swing compact excavator is both strong and maneuverable and includes cost saving systems designed to have a positive impact on your bottom line.

**NEW! DIGITAL OPERATOR INTERFACE ▲**

Located in a highly-visible area and backlit for improved visibility, this interface features:

- ▲ An hour meter and clock
- ▲ Recordable maintenance history with adjustable time intervals and reminders
- ▲ Multiple language selections
- ▲ Function which records hours used for past 90 days and can be monitored without starting the engine







**POWER-A-TACH® ▲** Attachments can be changed quickly with minimal effort. The operator only leaves the seat to engage and disengage the safety pin.



**POWERFUL ▲** Yanmar Tier IV emissions certified 24.4 hp (18.2 kW) diesel engine provides 20% less fuel consumption and an electronic throttle for precise control.



**INTUITIVE SERVICE ACCESS ▲** Two large rear doors, a swing-open side access panel, and removable covers beneath the operator's seat provide ample service access.

# MULTIFACETED MUSCLE



**PRECISION COUNTS ▲** Proportional controls for auxiliary hydraulics provide smooth hydraulic control for accurate, precise attachment performance.



**TRUE EFFICIENCY ▲** ECO mode and auto deceleration improve fuel economy, decrease noise and lower emission levels by reducing engine speed when not necessary.



**GET COMFORTABLE ▲** Larger cab features state-of-the-art controls, digital interface display and excellent visibility. Optional fully-enclosed cab further enhances operator comfort.

## 350Z NXT2



# FULL IMPACT



## ▶ 450Z



Turn to the 450Z when you need a top-performing machine with true zero-tail capability.

**TRUE ZERO-TAIL-SWING** ▲ Innovative design ensures that the upper structure never overhangs the tracks. Cast side protectors guard and prevent damage to the machine.

**POWER-A-TACH®** ▲ With the flip of a switch, attachments can be changed quickly with minimal effort. The operator only leaves the seat to engage and disengage the safety pin.







**HYDRAULIC FLOW** ▲ Four hydraulic pumps provide the ample flow required for smooth operation, even while using the boom and arm simultaneously.



**FIRM GRIP** ▲ Optional hydraulic thumb attachment comes factory installed, adding versatility and enhancing productivity for a wide variety of applications.



**OPERATOR FRIENDLY** ▲ Excellent visibility and ergonomic controls come standard, and an optional fully-enclosed cab features heat and air conditioning.

# WORK IN FULL SWING



**YANMAR DIESEL ENGINE** ▲ Powerful, proven Yanmar Interim Tier IV engine offers reliable operation and a fuel efficient system.



**EXTRA STABILITY** ▲ Wider track gauge and offset track drive system enhances machine stability without adding to overall width.



**EASY SERVICE ACCESS** ▲ Large, rear hood opens easily to expose the battery, engine oil, air filter and cooling system.

**450Z**



# HEAVY-DUTY

## STUD



## ▶ 800Z



**This 8 metric ton compact excavator is equipped with a powerhouse 54.6 hp (40.7 kW) Yanmar Interim Tier IV diesel engine. ECO mode and auto deceleration improve fuel economy and lower emission levels.**

**HIGH STRENGTH BOOM** ▲ Boom is constructed with thick side plates and mounted to the upper structure with a solid, single pin for added strength and durability. A heavy-duty cylinder guard protects the boom and dozer cylinder rods from damage. An optional factory-installed hydraulic thumb attachment adds versatility to the machine.

**POWER-A-TACH®** ▲ Change attachments hydraulically with the flip of a switch. The operator leaves the seat only to engage and disengage the safety pin.





**EXCEPTIONAL HYDRAULIC PRESSURE** ▲ Four hydraulic pumps provide the long-lasting, efficient power to fuel a wide variety of attachments.



**ECO MODE** ▲ Activated by the flip of a switch, ECO mode reduces engine speed by 10% without sacrificing power, saving fuel when full speed is not necessary.



**SERVICEABILITY** ▲ Service and daily maintenance checks are made easy with the large removable side panels, flip-open rear engine door and flip-open right access panel.

# STRONG MEETS SMART



**AUTO DECELERATION** ▲ This function improves fuel economy and lowers noise and emissions levels by reducing engine speed to idle after four seconds without hydraulic movement.



**OVERSIZED CAB** ▲ Large cab provides a spacious, ergonomic operating environment. The cab is mounted on five silicon oil-filled iso-mounts, which reduce cab noise and vibration to the operator.



**ZERO-TAIL-SWING** ▲ Zero-tail-swing design allows the superstructure to rotate entirely within the tracks without overhang, allowing operation close to walls and other obstacles.

**800Z**



SPECIFICATIONS

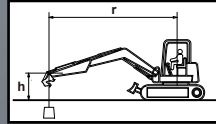
SPECIFICATIONS		170Z	270Z	350Z NXT2	450Z	800Z
ENGINE	Make	Yanmar	Yanmar	Yanmar	Yanmar	Yanmar
	Model	3TNV70-XBV Tier IV	3TNV82A-SBV Interim Tier IV	3TNV88F-ESBV Tier IV	4TNV88-BXBV Interim Tier IV	4TNV98-ZWBV1 Interim Tier IV
	Type	Diesel	Diesel	Diesel	Diesel	Diesel
	Displacement (L)	52.1 cu.in. (0.854)	81.13 cu.in. (1.33)	100.2 cu.in. (1.64)	134 cu.in. (2.19)	202.5 cu.in. (3.32)
	Net Power (kW) @ rpm	13.5 hp (10.1) @ 2200	21.6 hp (16.1) @ 2200	23.9 hp (17.8) @ 2200	39.6 hp (29.5) @ 2400	54.6 hp (40.7) @ 2000
	Fuel Tank (L)	5.3 gal. (20)	11.1 gal. (42)	10.8 gal. (41)	16.9 gal. (64)	30.4 gal. (115)
	Fuel Consumption (L/hr)	0.53 gal./hr. (2)	0.95 gal./hr (3.6)	1.03 gal./hr (3.9)	1.43 gal./hr (5.4)	1.9 gal./hr (7.2)
HYDRAULIC SYSTEM	Pumps	2 variable, 2 gear	2 variable, 2 gear	2 variable, 2 gear	2 variable, 2 gear	2 variable, 2 gear
	Flow Rate (L/min)	15.4 gpm (58.3)	25.56 gpm (96.8)	29.4 gpm (111.3)	34.9 gpm (132.6)	56.7 gpm (214.5)
	Working Pressure (bar)	2987 psi (206)	2990 psi (206)	3060 psi (211)	3133 psi (216)	3699 psi (255)
	Swing System Pressure (bar)	2132 psi (147)	2844 psi (196)	2844 psi (196)	3133 psi (216)	3481 psi (240)
	Oil Cooler	standard	standard	standard	standard	standard
	Hydraulic Tank (L)	4.4 gal. (16.7)	9.5 gal. (36)	10.6 gal. (40)	10.0 gal. (38)	15.9 gal. (60)
UNDERCARRIAGE AND SLEWING SYSTEM	Travel Speed - dual (km/hr)	1.3/2.7 mph (2.1/4.3)	1.7/2.9 mph (2.8/4.7)	1.7/2.8 mph (2.7/4.5)	1.4/2.9 mph (2.3/4.6)	1.6/2.8 mph (2.5/4.5)
	Gradability	20°	20°	20°	20°	20°
	Track Type / Width (mm)	Rubber / 9.1" (230)	Rubber / 10.2" (260)	Rubber / 11.8" (300)	Rubber / 14" (350)	Rubber / 17.7" (450)
	No. of Rollers per Side (track/idle)	3/1	4/1	4/1	4/1	5/1
	Undercarriage Length (mm)	5'0" (1525)	6'7" (2010)	7'1" (2160)	8'7" (2620)	9'6" (2890)
	Track Length on Ground (mm)	4'3.4" (1305)	5'8.1" (1730)	5'10" (1778)	7'5" (2260)	8'2.4" (2500)
	Ground Clearance (mm)	6.9" (175)	12.6" (320)	12.6" (320)	14.2" (360)	15.4" (390)
	Ground Pressure - Cab/Canopy (kPa)	N/A / 4.1 psi (28.6)	5.2/5.0 psi (36.0/34.6)	5.0/4.8 psi (34.3/33.1)	4.2/4.3 psi (28.6/29.3)	5.2 psi (35.8) / N/A
	Slew Speed	9.5 rpm	10 rpm	9.5 rpm	10 rpm	9 rpm
	Maximum Drawbar Pull (kg)	4181 lbs. (1897)	5508 lbs. (2498)	7306 lbs. (3314)	8655 lbs. (3926)	14,500 lbs. (6577)
	Maximum Bucket Breakout (kg)	3417 lbs. (1550)	5732 lbs. (2600)	5643 lbs. (2560)	6724 lbs. (3050)	11,332 lbs. (5140)
	Maximum Arm Digging Force (kg)	1918 lbs. (870)	3527 lbs. (1600)	4226 lbs. (1917)	4630 lbs. (2100)	8356 lbs.(3790)
DIMENSIONS	Operating Weight with Canopy (kg)	3836 lbs. (1740)	6946 lbs. (3150)	7905 lbs. (3585)	10,275 lbs. (4660)	N/A
	Operating Weight with Cab (kg)	N/A	7231 lbs. (3280)	8214 lbs. (3725)	10,562 lbs. (4790)	18,136 lbs. (8225)
	A. Max. Digging Depth (mm)	7'2.6" (2200)	9'0.3" (2750)	10'8" (3250)	12'0.9" (3680)	14'4.4" (4380)
	B. Max. Vertical Wall Digging Depth (mm)	6'0.8" (1850)	7'8.5" (2350)	7'11" (2410)	8'10.3" (2700)	12'10.3" (3920)
	C. Max. Reach at Ground Level (mm)	12'2.1" (3710)	15'0.7" (4590)	17'3.5" (5270)	18'10.4" (5750)	23'5.1" (7140)
	D. Transport Length (mm)	11'3.8" (3450)	13'7" (4140)	15'8" (4770)	17'3.1" (5260)	21'2.3" (6460)
	E. Undercarriage Length (mm)	5'0" (1525)	6'7.1" (2010)	7'1" (2160)	8'7.1" (2620)	9'5.8" (2890)
	F. Max. Digging Height (mm)	12'1.3" (3690)	15'1.9" (4620)	16'9.2" (5110)	19'6.2" (5950)	23'9.4" (7250)
	G. Max. Dump Height (mm)	8'7.5" (2630)	9'6.6" (2910)	11'2.3" (3410)	12'9.9" (3910)	15'2.7" (4640)
	H. Minimum Front Swing Radius (mm)	5'0.4" (1535)	6'11.5" (2120)	7'1.4" (2170)	7'8.1" (2340)	8'11.1" (2720)
	I. Transport Height (mm)	7'6.6" (2300)	8'2.8" (2510)	8'1" (2470)	8'7.1" (2620)	8'9.9" (2690)
	J. Blade Below Ground (mm)	8.1" (205)	1'0.6" (320)	1'2.6" (370)	1'8.5" (520)	1'6.9" (480)
	K. Overall Base Width (mm)	3'1.4"/4'2.4" (950/1280)	5'1" (1550)	5'8.5" (1740)	6'4.8" (1950)	7'5.4" (2270)
	L. Track Width (mm)	9.1" (230)	10.2" (260)	11.8" (300)	1'1.8" (350)	1'5.7" (450)
	M. Ground Clearance (mm)	6.9" (175)	1'0.6" (320)	12.6" (320)	1'2.2" (360)	1'3.4" (390)
	N. Parallel Offset Right (mm)	2'1.2" (640)	2'8.9" (835)	1'11.2" (590)	2'7.3" (795)	2'9.1" (840)
	O. Parallel Offset Left (mm)	1'3.7" (400)	1'7.3" (490)	2'1.2" (640)	2'1.6" (650)	2'0.4" (620)
	P. Rear End Swing Radius (mm)	2'1.2" (640)	2'6.5" (775)	2'6.5" (775)	3'2.4" (975)	3'8.7" (1135)
DOZER BLADE	Width - extended / retracted (mm)	3'1" (950) to 4'2" (1280)	5'1" (1550)	5'8.5" (1740)	6'6" (1970)	7'5" (2260)
	Height (mm)	9.3" (235)	13.6" (345)	14.6" (370)	15.7" (400)	17.7" (450)





# LIFTING CAPACITIES†

WITH POWER-A-TACH®



## 170Z

(h) LIFT POINT HEIGHT - in. (mm)	RATED LIFT CAPACITY OVER END BLADE DOWN - lbs. (kg)				RATED LIFT CAPACITY OVER END BLADE UP - lbs. (kg)				RATED LIFT CAPACITY OVER SIDE BLADE UP - lbs. (kg)			
	(r) LIFT RADIUS - in. (mm)				(r) LIFT RADIUS - in. (mm)				(r) LIFT RADIUS - in. (mm)			
	MAX	98.5 (2500)	78.7 (2000)	MIN	MAX	98.5 (2500)	78.7 (2000)	MIN	MAX	98.5 (2500)	78.7 (2000)	MIN
78.7 (2000)	*749 (340)	*705 (320)			496 (225)	*694 (315)			518 (235)	*694 (315)		
59.1 (1500)	*771 (350)	*815 (370)	*936 (425)		451 (205)	*672 (305)	*925 (420)		473 (215)	*815 (370)	*936 (425)	
39.4 (1000)	*804 (365)	*992 (450)	*1311 (595)	1466 (665)	407 (185)	628 (285)	903 (410)	1157 (525)	440 (200)	650 (295)	959 (435)	1212 (550)
19.7 (500)	*826 (375)	*1157 (525)	*1631 (740)	*2028 (920)	407 (185)	617 (280)	859 (390)	1036 (470)	440 (200)	650 (295)	914 (415)	1102 (500)
GROUND (0)	*859 (390)	*1212 (550)	*1686 (765)	*2314 (1050)	418 (190)	584 (265)	804 (365)	1146 (520)	451 (205)	628 (285)	848 (385)	1091 (495)
-19.7 (-500)	*903 (410)	*1201 (545)	*1620 (735)		462 (210)	573 (260)	782 (355)		496 (225)	617 (280)	848 (385)	
-39.4 (-1000)	*925 (420)		*1499 (680)		551 (250)		826 (375)		584 (265)		892 (405)	

## 270Z

(h) LIFT POINT HEIGHT - in. (mm)	RATED LIFT CAPACITY OVER END BLADE DOWN - lbs. (kg)				RATED LIFT CAPACITY OVER END BLADE UP - lbs. (kg)				RATED LIFT CAPACITY OVER SIDE BLADE UP - lbs. (kg)			
	(r) LIFT RADIUS - in. (mm)				(r) LIFT RADIUS - in. (mm)				(r) LIFT RADIUS - in. (mm)			
	MAX	118.1 (3000)	98.5 (2500)	78.8 (2000)	MAX	118.1 (3000)	98.5 (2500)	78.8 (2000)	MAX	118.1 (3000)	98.5 (2500)	78.8 (2000)
118.1 (3000)	*1472 (668)				1020 (463)				979 (444)			
98.5 (2500)	*1472 (668)	*1453 (659)			855 (388)	1170 (531)			813 (369)	1087 (493)		
78.7 (2000)	*1472 (668)	*1587 (720)	*1722 (781)		740 (336)	1144 (519)	*1693 (768)		723 (328)	1087 (493)	*1673 (759)	
39.4 (1000)	*1510 (685)	*2028 (920)	*2595 (1177)		681 (309)	1062 (482)	1408 (639)		657 (298)	1005 (456)	1369 (621)	
GROUND (0)	*1558 (707)	*2200 (998)	*2853 (1294)	*3909 (1773)	1038 (471)	1005 (456)	1360 (617)	1938 (879)	690 (313)	972 (441)	1219 (553)	1799 (816)
-39.4 (-1000)	*1547 (7020)		*2412 (1094)	*3170 (1438)	930 (422)		1369 (621)	1931 (876)	897 (407)		1276 (579)	1772 (804)
-59.1 (-1500)	*1356 (615)				*1375 (624)				*1367 (620)			

## 350Z NXT2

(h) LIFT POINT HEIGHT - in. (mm)	RATED LIFT CAPACITY OVER END BLADE DOWN - lbs. (kg)				RATED LIFT CAPACITY OVER END BLADE UP - lbs. (kg)				RATED LIFT CAPACITY OVER SIDE BLADE UP - lbs. (kg)			
	(r) LIFT RADIUS - in. (mm)				(r) LIFT RADIUS - in. (mm)				(r) LIFT RADIUS - in. (mm)			
	MAX	137.8 (3500)	118.1 (3000)	98.5 (2500)	MAX	137.8 (3500)	118.1 (3000)	98.5 (2500)	MAX	137.8 (3500)	118.1 (3000)	98.5 (2500)
118.1 (3000)	*1719 (780)	*1631 (740)	*1609 (730)		1058 (480)	1322 (600)	*1565 (710)		992 (450)	1278 (580)	*1565 (710)	
78.7 (2000)	*1763 (800)	*1918 (870)	*2138 (970)	*2491 (1130)	903 (410)	1276 (580)	1653 (750)	*2447 (1110)	815 (370)	1256 (570)	1543 (700)	*2447 (1110)
39.4 (1000)	*1800 (820)	*2336 (1060)	*2888 (1310)	*3813 (1730)	793 (360)	1190 (540)	1521 (690)	1984 (900)	749 (340)	1124 (510)	1410 (640)	1807 (820)
GROUND (0)	*1873 (850)	*2601 (1180)	*3218 (1460)	*4012 (1820)	815 (370)	1124 (510)	1410 (640)	1873 (850)	793 (360)	1058 (480)	1322 (600)	1719 (780)
-39.4 (-1000)	*1940 (880)	*2403 (1090)	*2954 (1340)	*3703 (1680)	925 (420)	1080 (490)	1388 (630)	1851 (840)	881 (400)	1014 (460)	1322 (600)	1675 (760)
-59.1 (-1500)	*1918 (870)	*2050 (930)	*2579 (1170)	*3130 (1420)	1124 (510)	1080 (490)	1410 (640)	1851 (840)	1058 (480)	1058 (480)	1344 (610)	1675 (760)
-78.7 (-2000)	*1851 (840)				1477 (670)				1410 (640)			

## 450Z

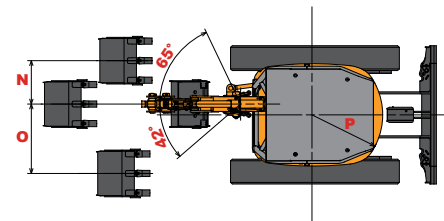
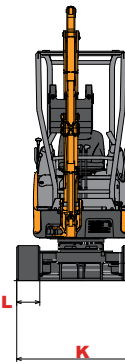
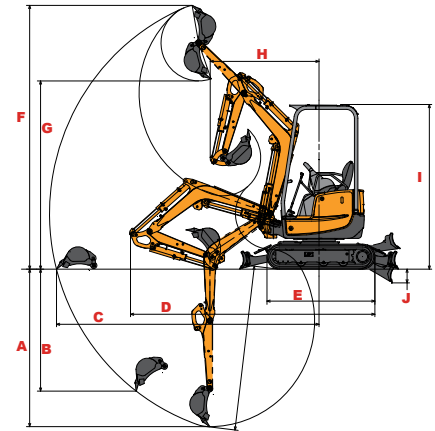
(h) LIFT POINT HEIGHT - in. (mm)	RATED LIFT CAPACITY OVER END BLADE DOWN - lbs. (kg)				RATED LIFT CAPACITY OVER END BLADE UP - lbs. (kg)				RATED LIFT CAPACITY OVER SIDE BLADE UP - lbs. (kg)			
	(r) LIFT RADIUS - in. (mm)				(r) LIFT RADIUS - in. (mm)				(r) LIFT RADIUS - in. (mm)			
	MAX	157.5 (4000)	118.1 (3000)	98.5 (2500)	MAX	157.5 (4000)	118.1 (3000)	98.5 (2500)	MAX	157.5 (4000)	118.1 (3000)	98.5 (2500)
157.5 (4000)	*1851 (840)				*1741 (790)				*1763 (800)			
118.1 (3000)	*1918 (870)	*1851 (840)			1234 (560)	*1741 (790)			1102 (500)	1410 (640)		
78.7 (2000)	*2006 (910)	*2160 (980)	*2733 (1240)	*3284 (1490)	992 (450)	1455 (660)	*2513 (1140)	*3196 (1450)	903 (410)	1322 (600)	*2623 (1190)	*3218 (1460)
39.4 (1000)	*2116 (960)	*2557 (1160)	*3659 (1660)	*4651 (2110)	947 (430)	1366 (620)	2204 (1000)	2932 (1330)	859 (390)	1234 (560)	2006 (910)	2623 (1190)
GROUND (0)	*2226 (1010)	*2755 (1250)	*3990 (1810)	*5026 (2280)	992 (450)	1300 (590)	2050 (930)	2711 (1230)	903 (410)	1168 (530)	1851 (840)	2447 (1110)
-39.4 (-1000)	*2336 (1060)	*2645 (1200)	*3769 (1710)	*4872 (2210)	1168 (530)	1300 (590)	2028 (920)	2821 (1280)	1058 (480)	1168 (530)	2028 (920)	3284 (1490)
-78.7 (-2000)	*2336 (1060)		*2777 (1260)	*3373 (1530)	1895 (860)		2160 (980)	2821 (1280)	1785 (810)		1984 (900)	2557 (1160)

## 800Z

(h) LIFT POINT HEIGHT - in. (mm)	RATED LIFT CAPACITY OVER END BLADE DOWN - lbs. (kg)				RATED LIFT CAPACITY OVER END BLADE UP - lbs. (kg)				RATED LIFT CAPACITY OVER SIDE BLADE UP - lbs. (kg)			
	(r) LIFT RADIUS - in. (mm)				(r) LIFT RADIUS - in. (mm)				(r) LIFT RADIUS - in. (mm)			
	MAX	196.9 (5000)	157.1 (4000)	118.1 (3000)	MAX	196.9 (5000)	157.1 (4000)	118.1 (3000)	MAX	196.9 (5000)	157.1 (4000)	118.1 (3000)
196.9 (5000)	*3638 (1650)		*3572 (1620)		*3550 (1610)		*3461 (1570)		2734 (1240)		*3550 (1610)	
157.5 (4000)	*3417 (1550)	*3417 (1550)	*3572 (1620)		2403 (1090)	2734 (1240)	*3417 (1550)		2271 (1030)	2491 (1130)	*3528 (1600)	
118.1 (3000)	*3483 (1580)	*3616 (1640)	*4233 (1920)	*5468 (2480)	2028 (920)	2668 (1210)	*4123 (1870)	*5336 (2420)	1896 (860)	2447 (1110)	*4145 (1880)	*5534 (2510)
78.7 (2000)	*3351 (1520)	*3946 (1790)	*5027 (2280)	*6879 (3120)	1830 (830)	2513 (1140)	3594 (1630)	*6174 (2800)	1697 (770)	2315 (1050)	3395 (1540)	4806 (2180)
39.4 (1000)	*3395 (1540)	*4255 (1930)	*5710 (2590)	*7651 (3470)	1764 (800)	2381 (1080)	3439 (1560)	4564 (2070)	1675 (760)	2249 (1020)	3175 (1440)	4255 (1930)
GROUND (0)	*3373 (1530)	*4321 (1960)	*5865 (2660)	*8070 (3660)	1830 (830)	2337 (1060)	3307 (1500)	4873 (2210)	1719 (780)	2160 (980)	3153 (1430)	4542 (2060)
-39.4 (-1000)	*3329 (1510)	*4057 (1840)	*5468 (2480)	*7585 (3440)	2028 (920)	2315 (1050)	3285 (1490)	5137 (2330)	1918 (870)	2160 (980)	3087 (1400)	4674 (2120)
-78.7 (-2000)	*2976 (1350)		*4498 (2040)	*6218 (2820)	2491 (1130)		3373 (1530)	5292 (2400)	2425 (1100)		3197 (1450)	4961 (2250)

## REFERENCE DIAGRAMS

170Z Shown



## EMISSIONS CLASSIFICATION



Machines with this decal comply with Interim Tier IV standards



Machines with this decal comply with Tier IV standards

### † Lifting Capacity Charts Notes

- Lifting capacity is hydraulically limited (denoted with \*).
- Note where applicable specifications conform to ISO standards.
- Weight of all lifting devices and attachment must be deducted to determine load that can be lifted.
- Lift point is bucket hinge point



## ZERO-TAIL-SWING COMPACT EXCAVATORS

FEATURES	170Z	270Z	350Z NXT2	450Z	800Z
<b>ENGINE</b>					
Electric Glow Plug Starting Aid	○		○		
Electric Grid Heater Starting Aid		○		○	○
Yanmar, Naturally-Aspirated diesel engine	○	○	○	○	○
ECO Mode			○		○
<b>HYDRAULIC SYSTEM</b>					
Power-A-Tach® Hydraulic Quick-Attach System		○	○	○	○
Factory Installed Hydraulic Thumb Attachment		●	●	●	●
Hydraulic Pumps	4	4	4	4	4
ISO / SAE Pattern Control Valve	○	○	○	○	○
Proportional Auxiliary Hydraulic Joystick Control			○		○
Two-way Auxiliary Hydraulics with Quick Couplers and Direct-to-Tank Bypass Valve	○	○	○	○	○
<b>UNDERCARRIAGE</b>					
Automatic 2-speed Transmission					○
Hydraulically Extendable Undercarriage	○				
Rubber Tracks	○	○	○	○	○
Selectable 2-Speed Transmission	○	○	○	○	
Track Rollers	3	4	4	4	5
<b>UPPERSTRUCTURE</b>					
Auto Idle			○		○
360° Continuous Movement	○	○	○	○	○
ROPS / TOPS / FOPS Cab/Canopy	○	○	○	○	○
Zero-Tail-Swing	○	○	○	○	○
<b>OPERATOR STATION</b>					
Enclosed Cab		●	●	●	○
Canopy	○	○	○	○	
3" Safety Belt		●		●	●
Adjustable Armrests - height and angle	○	○	○	○	○
Forearm Supports	○	○	○	○	○
Adjustable Suspension Seat		○	○	○	○
Air Conditioning			●	●	○
Radio-Ready with Speakers and Antennae			○		○
Horn	○	○	○	○	○
<b>LIGHTS</b>					
Boom Work Lights	○	○	○	○	○

### SAFETY IS NO ACCIDENT

● OPTIONAL ○ STANDARD

Mustang reminds users to read and understand the operator's manual before operating any piece of equipment. Additionally, make sure all safety devices and shields are in place and functioning properly.

## GET ATTACHED

With a wide variety of **EDGE®** attachments available from your authorized dealer, Mustang Compact Excavators are easily transformed to meet the needs of your business.



# EDGE®



Mustang authorized dealers offer a full line of compact equipment, backed up by exceptional sales, service and parts support. To find your nearest authorized Mustang dealer, visit the Dealer Locator on [mustangmfg.com](http://mustangmfg.com)

For more information on Mustang Zero-Tail-Swing Compact Excavators and the rest of the Mustang equipment line, call our hotline at

**1-800-628-0491**

or visit [mustangmfg.com](http://mustangmfg.com)



This product is created from well-managed forests, controlled sources, and contains a minimum of 10% post consumer waste.

# MUSTANG®

West Bend, WI 53095 U.S.A. | Tel: 262-334-9461 | Fax: 262-338-7517