



SANY

Quality Changes the World



SANY DOUBLE DRUM ROLLER STR SERIES

ENERGY SAVING STAR, LEADING THE INDUSTRY



P2

Power Of China

P3

Extraordinary Compacting
Performance

P4

High Reliability

P5

Perfect Design Ensures Safety
& Comfortable Operation

P7

Quick
& Convenient Maintenance

P8

Specific Performance
& Customized Design

P9

Suit For Different
Job Sites

P10

Equipment Specification



Power Of China

SANY full hydraulic tandem roller is the leading brand of road machinery in China. SANY has been devoted into R&D of full hydraulic tandem vibratory roller since 1999. There are two generation products of Y series and S series. Their operating weights include 10tons, 11tons, 12tons, 13tons, and so on.

S series tandem roller was developed in 2010.

As a market creator of full hydraulic tandem roller in China, SANY is well-commented for its impressive performance & reliable quality. After taking more and more domestic market share, SANY focuses more attention on overseas market. More and more SANY tandem rollers are exported to South America, Africa, South-east Asia, Oceania, and so on.

- S series tandem roller was launched in 2010.
- STR 130C was shown in Shanghai Bauma China 2010 for the first time. It was a big bomb for its new style & streamlined design.
- S series tandem roller was also appeared in BICES in Beijing on Oct, 2011.



reddot design award

Overview of the results of the products submitted by you to the "red dot award: product design 2011"

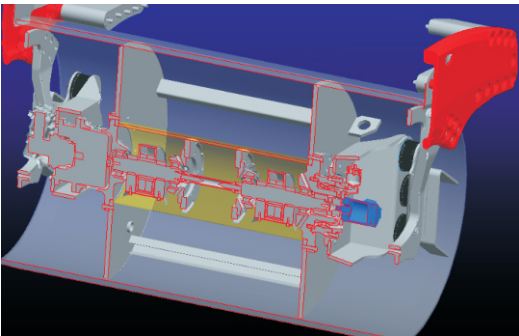
The following product was awarded an "honourable mention":

13-3125-2011PD Sany Road Roller

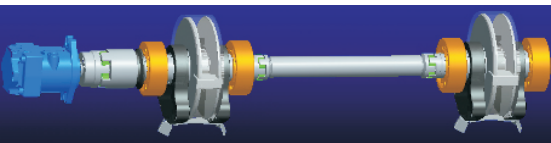
EXTRAORDINARY COMPACTING PERFORMANCE

Compared with similar product, SANY tandem roller features steady work & high gradeability which is less than or equal to 2.5mm/3m.

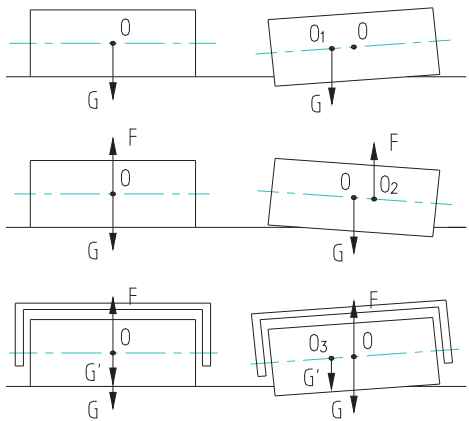
- Damp blocks located by driving motor & vibrating motor are not rotary so that vibration balance is improved.
- Four-point supporting structure of vibratory wheel effectively reduces pressure of vibrating system. It also reduces instability of on-off vibration to improve system reliability & vibrating stability.



- Five-step buffering structure of vibratory wheel effectively reduces shock of on-off vibration to improve gradeability.
- Driving motor & vibrating motor are separately installed on two sides of steel drum. This layout improves traveling stability and compensates gradeability.



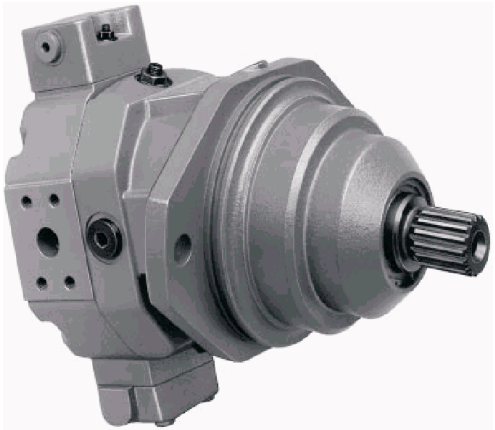
- 'Four centers in one' as shown in below figure guarantees high gradeability.
- SANY tandem roller features high compaction thickness & density. For example, 10mm asphalt & concrete can be compacted with a high density reach to 98.7%.



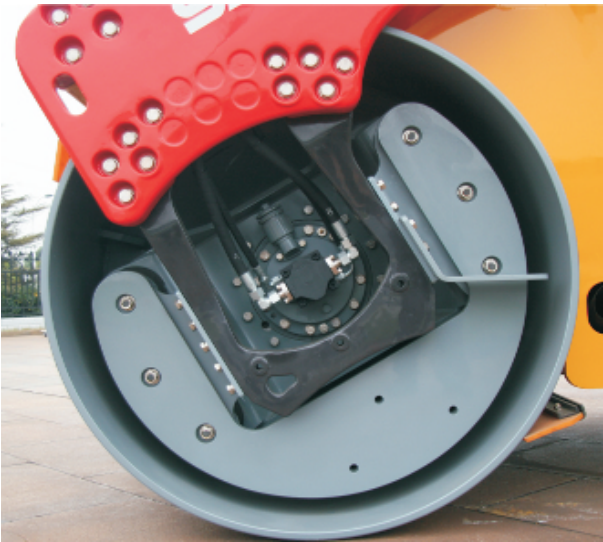
O – Shape center of the drum
O₁ – Weight center of the drum
O₂ – Force center of the vibration
O₃ – Weight center of the frame
G – Gravity of the drum
G' – Gravity of the frame
F – Vibratory force

HIGH RELIABILITY

- Key parts are totally purchased from international branded company, such as Deutz engine, Rexroth hydraulic pump & motor, SKF vibratory bearing, Fairfield reducer, and so on.



- Endurable Nord damp block is adopted with a symmetrical installation structure. It doesn't rotate with steel drum.

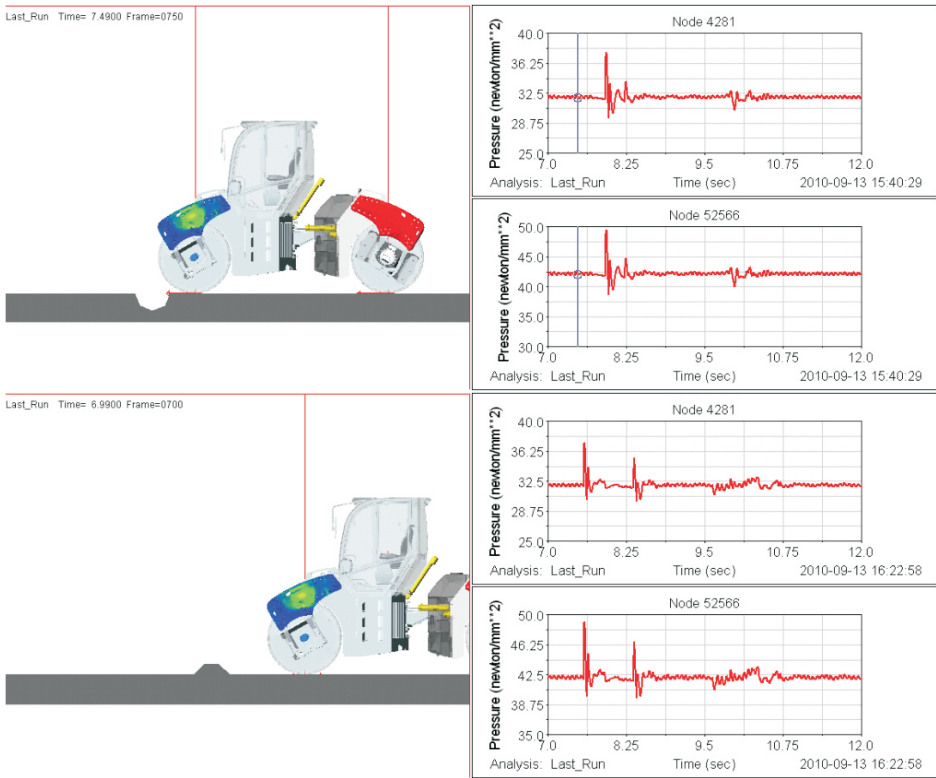


PERFECT DESIGN ENSURES safety & COMFORTABLE OPERATION

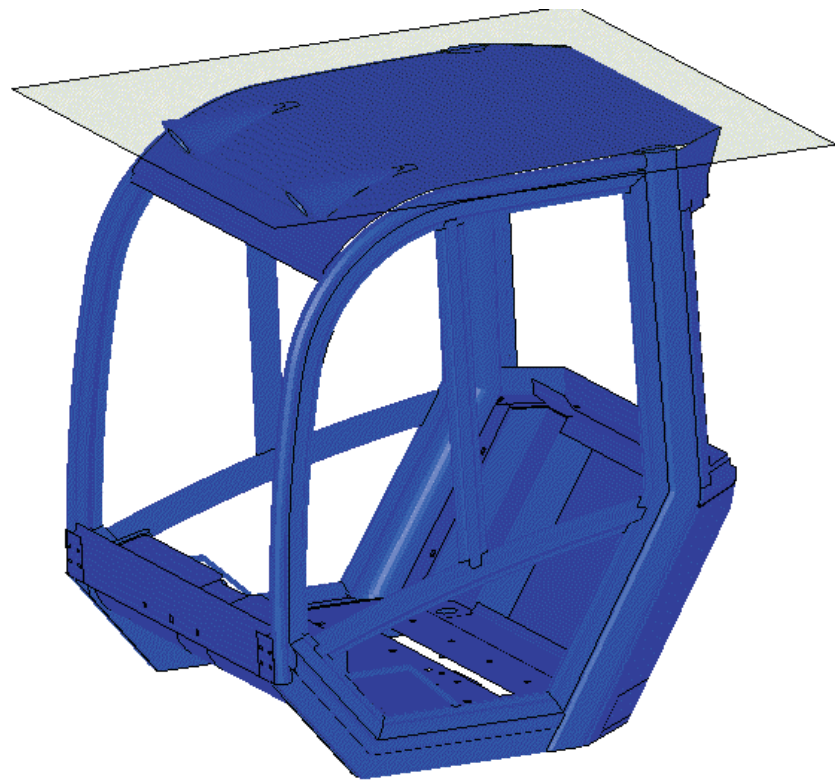
- Front & rear visibility meets the security requirement of 1m x 0.5m which is higher than Euro security standard. There is no blind area when operator working in the cab.



- Digital dynamic simulation of compacting uneven earth helps engineers find the right stiffness of integrated structural parts to make roller tough and powerful.



- PAE analysis on ROPS of driving cab guarantees operator's security in rolling accident.



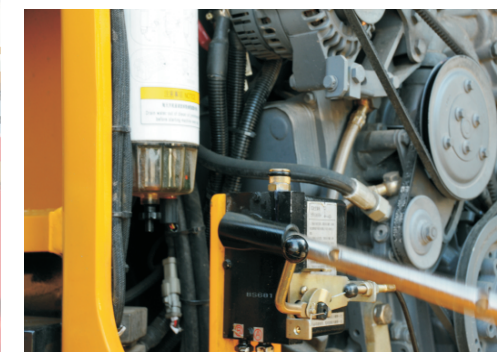
- Well-equipped driving cab brings you fantastic operating experience in any time under any weather. Air conditioner is no longer an optional part. 3-direction adjustable seat suits for operator with different body figure. Details such as cup seat, radio, fog-removing device are considerate.



- Max working noise is only 84 db out of driving cab under low frequency & high amplitude vibration.

Quick & Convenient Maintenance

- Air filter, diesel filter, hydraulic oil filter are all in mechanic's reach. It's easy to check and change filter core.
- Exposed double pump makes maintenance became easy. Layout of hydraulic pipes is regular and decent. All the electrical control components are installed in the cab. Maintenance is convenient.
- Engine is easy to check after flipping cab up.
- Maintenance of exposed water sprinkler is convenient.
- It's easy to check and change filters, pumps and wearing parts.



Specific Performance & Customized Design

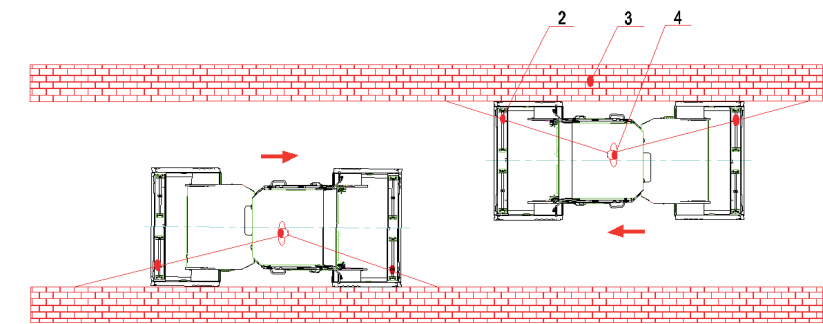
- Double handles & double steering wheels' design suits for operators with different driving habits.
- Rotatable & extendable seat makes curb compaction completely in the control of operator.



- STR series roller can work on 35° slope for its advance anti-slip technology.
- Travel & vibration are all controlled by just one joystick. With a steering wheel and a red button, operation of SANY tandem roller becomes easy and less fatigue.



- Adjustable cursor locating device makes curb compaction become easy. Operator can judge machine's position even in the cab.



SUIT FOR DIFFERENT JOB SITES

SANY full hydraulic tandem roller can cope with different job sites. For example, it works steady not only in Guangzhou under 45°C high temperature but also in Harbin under -20°C low temperature. Either asphalt compaction or concrete compaction, STR series roller is impressive.



STR130C working in Kunming, China



STR130C working in Xinjiang, China



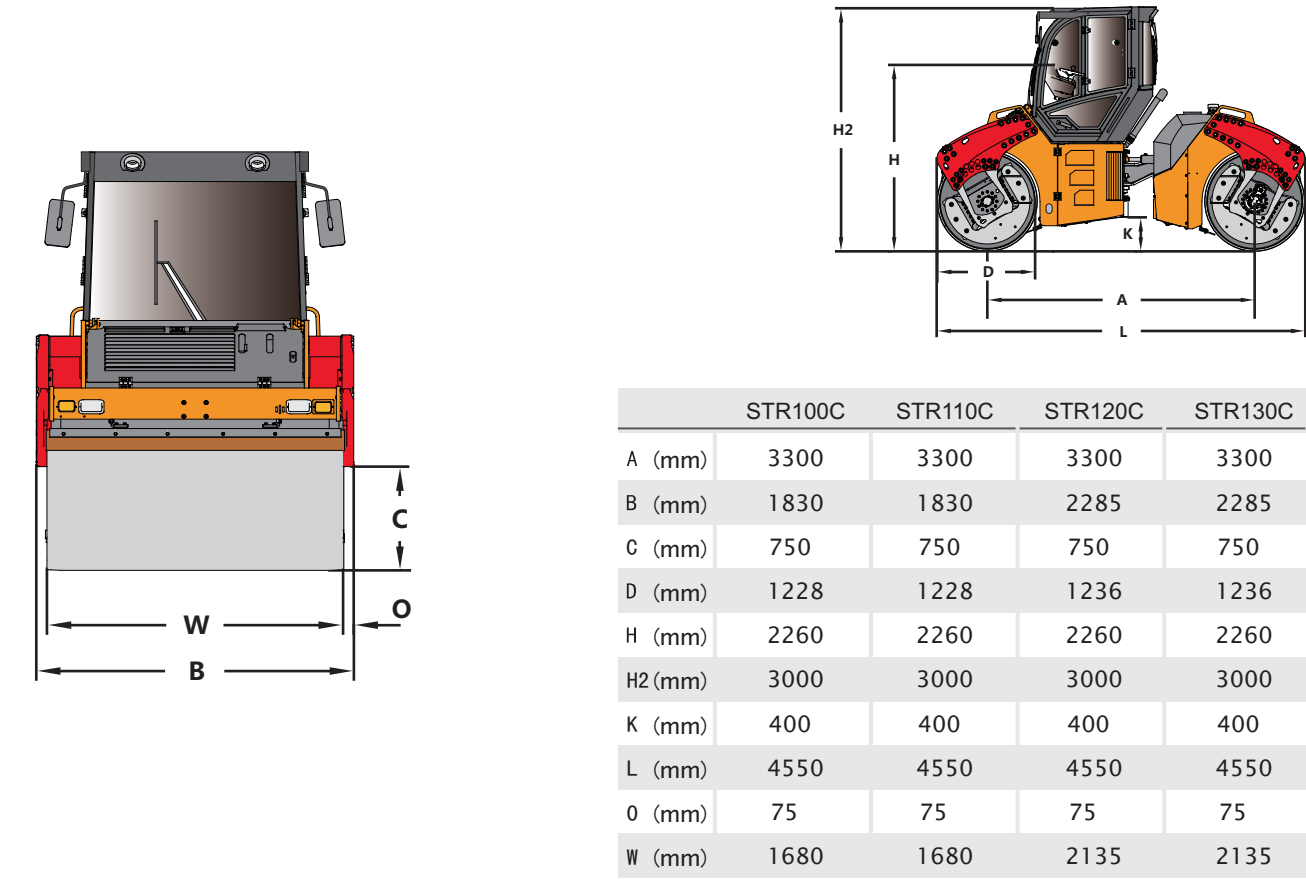
STR100C working in Shaoguan, China

EQUIPMENT SPECIFICATION

SPECIFICATION

STR-Series Double Drum Roller					
Model		STR100C	STR110C	STR120C	STR130C
Weight Load	Working weight (with cab)(kg)	10700	11400	12500	13500
	Distributed weight for front drum(kg)	5400	5700	6250	6750
	Distributed weight for rear drum(kg)	5300	5700	6250	6750
	Static linear load for front drum(N/cm)	315	330	300	310
	Static linear load for rear drum(N/cm)	310	330	300	310
Compaction Performance	Frequency(Hz)	40/50	40/50	40/50	40/50
	Norminal amplitude(mm)	0.70/0.30	0.70/0.30	0.70/0.30	0.70/0.30
	Exciting force(kN)	110/70	120/75	130/85	140/90
	Diameter of drum(mm)	1220	1220	1230	1230
	Width of drum(mm)	1680	1680	2135	2135
	Rim thickness of drum(mm)	19	19	23	23
Maneuverability performance	Travel speed High(km/h)	0~10.5	0~10.5	0~10.5	0~10.5
	Low (km/h)	0~5.4	0~5.4	0~5.4	0~5.4
	Theoretical gradeability vibration(%)	30	30	30	30
	No vibration(%)	35	35	35	35
	Min. Ground clearrance (mm)	350	350	350	350
	Wheelbase (mm)	3300	3300	3300	3300
	Steering angle (°)	±30	±30	±30	±30
	Swing angle(°)	±6	±6	±6	±6
Engine	Min. Steering outer diameter (mm)	12600	12600	13000	13000
	Crab traveling (mm)	±170	±170	±170	±170
	Manufacturer	Deutz	Deutz	Deutz	Deutz
	Model	BF4M2012C	BF4M2012C	BF4M2012C	BF4M2012C
Capacity	Rated Power(kW)	98	98	98	98
	Storage battery (V×Ah)	12×100	12×100	12×100	12×100
	Water tank(L)	1000	1000	1000	1000
	Fuel tank(L)	200	200	200	200
	Hydraulic oil tank (L)	60	60	60	60

DIMENSION



OPERATION RANGE

Compaction Performance					
Model		STR100C	STR110C	STR120C	STR130C
Frequency(Hz)		40/50	40/50	40/50	40/50
Norminal amplitude (mm)		0.70/0.30	0.70/0.30	0.70/0.30	0.70/0.30
Exciting force(kN)		110/70	120/75	130/85	140/90
Diameter of drum(mm)		1220	1220	1230	1230
Width of drum(mm)		1680	1680	2135	2135
Rim thickness of drum(mm)		20	20	23	23

Materials and specifications are subject to change without further notice in accordance with our continuous technical innovations.Photos and illustrations may not include additional equipments.



Quality Changes the World

SANY GROUP CO., LTD.

Address: SANY Industrial Park, Economic and Technological
Development Zone, Changsha, Hunan, China

Service Hotline: +0086-4006-098-318

E-mail: crd@sany.com.cn

For more information, please visit: www.sanygroup.com

B02S2ENAM1-STR

